



MERCEDES C COUPE: ZM8147

| | | | |
|-------------------------|--------------------------|--------------|-----------------------|
| Vinnumber: | WDD2053401F639283 | Versionname: | C 180 AMG Line |
| First Registrationdate: | 29/09/2017 | Fiscalpower: | |
| Expertise Mileage: | 44699 | Power Kw: | 115 |
| Bodytype: | | Body color: | Grey |
| Gearbox: | MAN 6 VIT | Paint type: | Metalic |
| Transmission: | | Rims summer: | Aluminium |
| Fueltype: | Petrol | Oil level: | OK |
| Battery functioning: | Yes | Parking lot: | 4524 |
| Number of doors: | 4 | | |
| Number of seats: | 4 | | |
| Number head rests: | 4 | | |
| Rims summer: | Aluminium | | |
| Category: | Passenger Car | | |
| Oil level: | OK | | |

Options

| | |
|--------------------------------|------------------------------|
| Radio CD | Central consol F |
| Windows electric F | Front parking sensors |
| Windows electric R | Rear parking sensors |
| Cruise Control | Type of Tow bar |
| Steering wheel multifunctional | No Tow bar |
| Radio multimedia | |
| Type of headlighting | Headlighting LED |
| Type of GPS | GPS big screen color |
| Type of Lining | Lining leather |
| Type of climate control | Autom climate control |
| Sport seats | |

Limited Technical Inspection

| | | | |
|---------------------|-----------|---------------------|------------|
| Airco functioning | OK | Battery functioning | Yes |
| Tires wear profile | OK | Power steering | Yes |
| Idle position | OK | Sound engine | OK |
| Engine startingtime | OK | Clutch test | OK |
| Exhaust gass | OK | Wiper fluid level | OK |
| Handbrake | OK | Transmission | OK |
| | | Lighting | OK |
| | | Wiperblades | OK |

Degree of wear

| | | | | |
|---------------|----------------------------------|--------------------------|-------|--------------------------|
| | 245/40/18/97 Y LightMetal | | | |
| Summer tyres: | Fr.L. | Bridgestone: 5 mm | Fr.R. | Bridgestone: 5 mm |
| | Re.L. | Bridgestone: 3 mm | Re.R. | Bridgestone: 3 mm |

Assistance equipment

| | | | |
|------------|------------|------------|------------|
| Repair kit | Yes | Compressor | Yes |
|------------|------------|------------|------------|

| | |
|-------------------|----------------|
| Total cost ex VAT | 1548,20 |
|-------------------|----------------|

| | |
|---|--------------|
| Alloy rim R R polished, Scratch(es), LI - Repair and paint (complete) | 95,00 |
|---|--------------|





Alloy rim R L polished, Scratch(es), LI - Repair and paint (complete)

95,00



Alloy rim F L polished, Scratch(es), LI - Repair and paint (complete)

95,00



Ignition key, Missing, E - Replace

150,00



Bumper moulding F M, Dent(s) and scratch(es), E - Replace

14,40



Door F R, Scratch(es), Acceptable

0,00

No pictures to display

Bumper R, Scratch(es), LI - Repair and paint (complete)

211,80



Sill outer L, Scratch(es), LI - Repair and paint (complete)

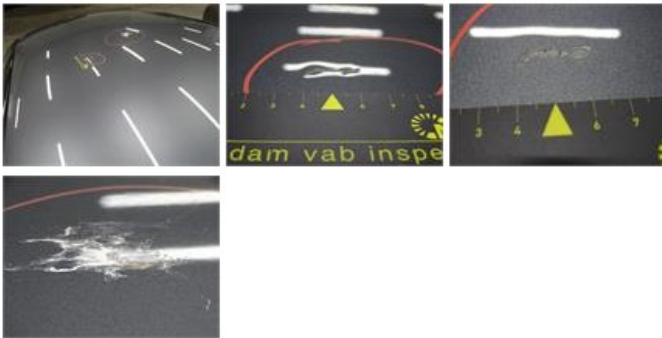
310,50





Roof, Chemical polution, LI - Repair and paint (complete)

481,50



Alloy rim F R polished, Scratch(es), LI - Repair and paint (complete)

95,00

