



**OPEL ZAFIRA TOURER: 1LNE935**

Vinnumber:	<b>WOLPE9E32G1010541</b>	Versionname:	<b>1.6 CDTI ECOFLEX 100KW S/S COSMO</b>
First Registrationdate:	<b>27/10/2015</b>	Fiscalpower:	
Expertise Mileage:	<b>156698</b>	Power Kw:	<b>100</b>
Bodytype:	<b>SUV</b>	Body color:	<b>Dark Brown</b>
Gearbox:	<b>MAN 6 VIT</b>	Paint type:	<b>Metalic</b>
Transmission:		Rims summer:	<b>Aluminium</b>
Fueltype:	<b>Diesel</b>	Oil level:	<b>OK</b>
Battery functioning:	<b>Yes</b>	Parking lot:	<b>4231</b>
Number of doors:	<b>5</b>		
Number of seats:	<b>5</b>		
Number head rests:	<b>5</b>		
Rims summer:	<b>Aluminium</b>		
Category:	<b>Passenger Car</b>		
Oil level:	<b>OK</b>		
Registration Certificate Car (BE):	<b>Yes</b>		

**Options**

Radio CD	Central consol F
Windows electric F	Luggage cover
Windows electric R	Front parking sensors
Cruise Control	Rear parking sensors
Steering wheel multifunctional	Type of Tow bar
Type of headlighting	<b>Headlighting Xenon</b>
Type of GPS	<b>GPS big screen color</b>
Type of Lining	<b>Lining semi-leather</b>
Type of climate control	<b>Autom climate control</b>
	<b>No Tow bar</b>

**Limited Technical Inspection**

Airco functioning	<b>OK</b>	Battery functioning	<b>Yes</b>
Tires wear profile	<b>OK</b>	Power steering	<b>Yes</b>
Idle position	<b>OK</b>	Sound engine	<b>OK</b>
Engine startingtime	<b>OK</b>	Clutch test	<b>OK</b>
Exhaust gass	<b>OK</b>	Wiper fluid level	<b>OK</b>
Handbrake	<b>OK</b>	Transmission	<b>OK</b>
		Lighting	<b>OK</b>
		Wiperblades	<b>OK</b>

**Degree of wear**

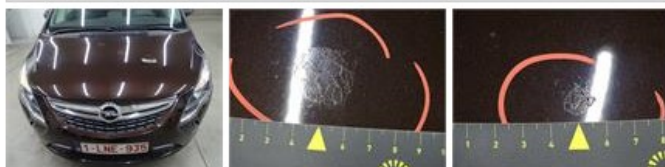
<b>215/60/16/99 W LightMetal</b>				
Summer tyres:	Fr.L.	<b>Vredestein: 7 mm</b>	Fr.R.	<b>Vredestein: 7 mm</b>
	Re.L.	<b>Continental: 5 mm</b>	Re.R.	<b>Continental: 5 mm</b>

**Assistance equipment**

Repair kit	<b>Yes</b>	Compressor	<b>Yes</b>
------------	------------	------------	------------

Total cost ex VAT 1146,96

Bonnet, Chemical polution, LI - Repair and paint (complete) 290,08





Bumper R, Scratch(es), Acceptable 0,00

No pictures to display

Door F R, Dent(s) and scratch(es), LI - Repair and paint (complete) 318,35



Wing F R, Dent(s) and scratch(es), LI - Repair and paint (complete) 220,18



Door R L, Dent(s) and scratch(es), LI - Repair and paint (complete) 318,35



Outer door handle F L, Scratch(es), Acceptable 0,00

No pictures to display

Wing R R, Dent(s) and scratch(es), Acceptable 0,00

No pictures to display