



TOYOTA Auris: 1GEZ766

| | | | |
|------------------------------------|--------------------------|--------------|---|
| Vinnumber: | SB1ZS3JE30E071584 | Versionname: | AURIS TOUR.SP. HSD Comfort CVT 99PK Aut. |
| First Registrationdate: | 21/01/2014 | Fiscalpower: | |
| Expertise Mileage: | 137687 | Power Kw: | 73 |
| Bodytype: | Break | Body color: | Dark Grey |
| Gearbox: | Automatic | Paint type: | Metalic |
| Transmission: | Front | Rims summer: | Aluminium |
| Fueltype: | Hybrid Petrol | Oil level: | OK |
| Battery functioning: | Yes | Parking lot: | 4628 |
| Number of doors: | 5 | | |
| Number of seats: | 5 | | |
| Number head rests: | 5 | | |
| Rims summer: | Aluminium | | |
| Category: | Passenger Car | | |
| Oil level: | OK | | |
| Registration Certificate Car (BE): | Yes | | |

Options

| | | | |
|--------------------------------|------------------------------|-----------------------|-------------------|
| Radio CD | | Central consol F | |
| GPS storage | HD | Luggage cover | |
| GPS storage | | Front parking sensors | |
| Windows electric F | | Rear parking sensors | |
| Windows electric R | | Type of Tow bar | No Tow bar |
| Cruise Control | | | |
| Steering wheel multifunctional | | | |
| Radio multimedia | | | |
| Type of headlighting | Headlighting Halogen | | |
| Type of GPS | GPS big screen color | | |
| Type of Lining | Lining fabrics | | |
| Type of climate control | Autom climate control | | |

Limited Technical Inspection

| | | | |
|---------------------|-----------|---------------------|------------|
| Airco functioning | OK | Battery functioning | Yes |
| Tires wear profile | OK | Power steering | Yes |
| Idle position | OK | Sound engine | OK |
| Engine startingtime | OK | Clutch test | OK |
| Exhaust gass | OK | Wiper fluid level | OK |
| Handbrake | OK | Transmission | OK |
| | | Lighting | OK |
| | | Wiperblades | OK |

Degree of wear

| | | | | |
|---------------|----------------------------------|-----------------------|-------|-----------------------|
| | 195/65/15/91 T LightMetal | | | |
| Winter tyres: | Fr.L. | Goodyear: 5 mm | Fr.R. | Goodyear: 5 mm |
| | Re.L. | Pirelli: 4 mm | Re.R. | Pirelli: 4 mm |

Assistance equipment

| | | | |
|--|------------|------------|------------|
| Repair kit | Yes | Compressor | Yes |
| Number of charging cables (normal) | 0 | Jack | Yes |
| Number of charging cables (rapid charge) | 0 | | |

| | |
|--------------------------|----------------|
| Total cost ex VAT | 2066,05 |
|--------------------------|----------------|

| | |
|--|-------------|
| Door F L, Scratch(es), Acceptable | 0,00 |
|--|-------------|

No pictures to display

| | |
|--|-------------|
| Door R R, Scratch(es), Acceptable | 0,00 |
|--|-------------|

No pictures to display

Wing R L, Dent(s) and scratch(es), LI - Repair and paint (complete)

308,20



Door R L, Dent(s) and scratch(es), LI - Repair and paint (complete)

318,35



Bumper F, Scratch(es), LI - Repair and paint (complete)

211,80



Rocker panel inner R L, Dent(s), Acceptable

0,00

No pictures to display

Bumper R, Scratch(es), LI - Repair and paint (complete)

211,80



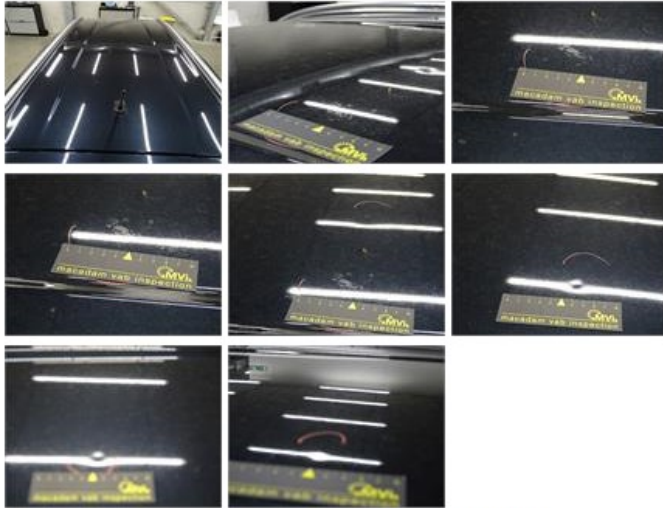
Wing R R, Dent(s) and scratch(es), LI - Repair and paint (complete)

308,20





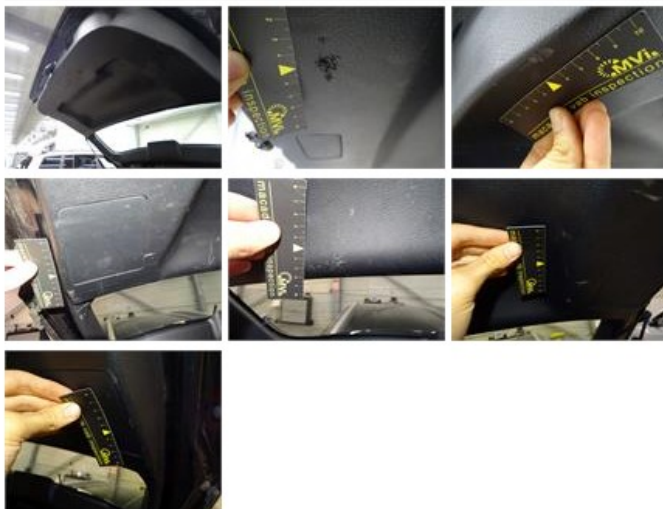
| | |
|---|--------|
| Wing F L, Scratch(es), Acceptable | 0,00 |
| <i>No pictures to display</i> | |
| Tailgate, Chemical polution, Acceptable | 0,00 |
| <i>No pictures to display</i> | |
| Rocker panel inner R R, Dent(s), Acceptable | 0,00 |
| <i>No pictures to display</i> | |
| Alloy rim F L, Scratch(es), Acceptable | 0,00 |
| <i>No pictures to display</i> | |
| Roof, Chemical polution, LI - Repair and paint (complete) | 481,50 |



| | |
|---|--------|
| Rear spoiler, Chemical polution, LI - Repair and paint (complete) | 115,56 |
|---|--------|



| | |
|---|--------|
| Wing F R, Scratch(es), Acceptable | 0,00 |
| <i>No pictures to display</i> | |
| Trunk lid covering R, Scratch(es), Smart repair | 110,64 |



| | |
|-----------------------------------|------|
| Door F R, Scratch(es), Acceptable | 0,00 |
| <i>No pictures to display</i> | |

