



PEUGEOT 308 SW: 1KRJ391

Vinnumber:	VF3LCBHXHFS149225	Versionname:	1.6 BLUEHDI 85KW S/S ACTIVE
First Registrationdate:	16/06/2015	Fiscalpower:	
Expertise Mileage:	77485	Power Kw:	85
Bodytype:	Break	Body color:	Grey
Gearbox:	MAN 6 VIT	Paint type:	Metalic
Transmission:		Rims summer:	Aluminium
Fueltype:	Diesel	Oil level:	OK
Battery functioning:	Yes	Parking lot:	1306
Number of doors:	5		
Number of seats:	5		
Number head rests:	5		
Rims summer:	Aluminium		
Category:	Passenger Car		
Oil level:	OK		
Registration Certificate Car (BE):	Yes		

Options

Radio CD	Central consol F	
Windows electric F	Luggage cover	
Windows electric R	Rear parking sensors	
Cruise Control	Type of Tow bar	No Tow bar
Steering wheel multifunctional		
Radio multimedia		
Type of headlighting	Headlighting Halogen	
Type of GPS	GPS big screen color	
Type of Lining	Lining fabrics	
Type of climate control	Autom climate control	

Limited Technical Inspection

Airco functioning	OK	Battery functioning	Yes
Tires wear profile	OK	Power steering	Yes
Idle position	OK	Sound engine	OK
Engine startingtime	OK	Clutch test	OK
Exhaust gass	OK	Wiper fluid level	OK
Handbrake	OK	Transmission	OK
		Lighting	OK
		Wiperblades	OK

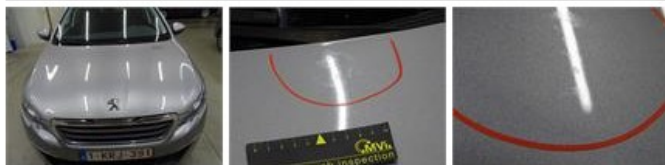
Degree of wear

	205/55/16/91 V LightMetal			
Summer tyres:	Fr.L.	Uniroyal: 4 mm	Fr.R.	Uniroyal: 4 mm
	Re.L.	Michelin: 4 mm	Re.R.	Michelin: 4 mm

Assistance equipment

Compressor	Yes
------------	------------

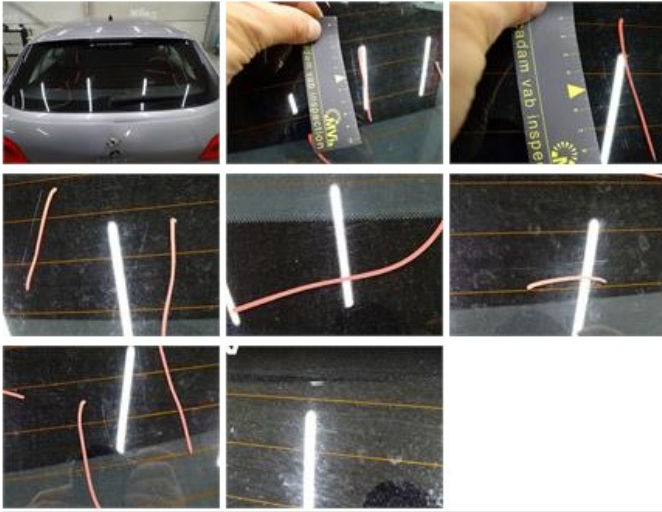
Total cost ex VAT	660,08
Bonnet, Chemical polution, LI - Repair and paint (complete)	290,08





Rear window, Scratch(es), E - Replace

370,00



Wing R R, Dent(s), Acceptable

0,00

No pictures to display