



**RENAULT Kangoo: 1HKA235**

Vinnumber:	<b>VF1KWX8B551381992</b>	Versionname:	<b>KANGOO Energy Intens 90PK</b>
First Registrationdate:	<b>6/08/2014</b>	Fiscalpower:	
Expertise Mileage:	<b>150189</b>	Power Kw:	<b>66</b>
Bodytype:		Body color:	<b>Blue</b>
Gearbox:	<b>MAN 5 VIT</b>	Paint type:	<b>Metalic</b>
Transmission:		Rims summer:	<b>Aluminium</b>
Fueltype:	<b>Diesel</b>	Oil level:	<b>OK</b>
Battery functioning:	<b>Yes</b>	Parking lot:	<b>3733</b>
Number of doors:	<b>5</b>		
Number of seats:	<b>5</b>		
Number head rests:	<b>5</b>		
Rims summer:	<b>Aluminium</b>		
Category:	<b>Passenger Car</b>		
Oil level:	<b>OK</b>		
Registration Certificate Car (BE):	<b>Yes</b>		

**Options**

Radio CD	Central consol F
Windows electric F	Luggage cover
Windows electric R	Type of Tow bar
Cruise Control	<b>No Tow bar</b>
Steering wheel multifunctional	
Type of headlighting	<b>Headlighting Halogen</b>
Type of GPS	<b>GPS big screen color</b>
Type of Lining	<b>Lining fabrics</b>
Type of climate control	<b>Autom climate control</b>

**Limited Technical Inspection**

Airco functioning	<b>OK</b>	Battery functioning	<b>Yes</b>
Tires wear profile	<b>OK</b>	Power steering	<b>Yes</b>
Idle position	<b>OK</b>	Sound engine	<b>OK</b>
Engine startingtime	<b>OK</b>	Clutch test	<b>OK</b>
Exhaust gass	<b>OK</b>	Wiper fluid level	<b>OK</b>
Handbrake	<b>OK</b>	Transmission	<b>OK</b>
		Lighting	<b>OK</b>
		Wiperblades	<b>OK</b>

**Degree of wear**

<b>205/55/16/91 H LightMetal</b>				
Summer tyres:	Fr.L.	<b>Michelin: 5 mm</b>	Fr.R.	<b>Michelin: 5 mm</b>
	Re.L.	<b>Michelin: 6 mm</b>	Re.R.	<b>Michelin: 6 mm</b>

**Assistance equipment**

Spare wheel	<b>Yes</b>
-------------	------------

Total cost ex VAT 943,76

Rearview mirror housing R, Scratch(es), LI - Repair and paint (complete) 115,56



Bumper moulding F L, Bad repair, Acceptable 0,00



Wing R R, Scratch(es), LI - Repair and paint (complete) 308,20



Wing F R, Scratch(es), Acceptable 0,00

No pictures to display

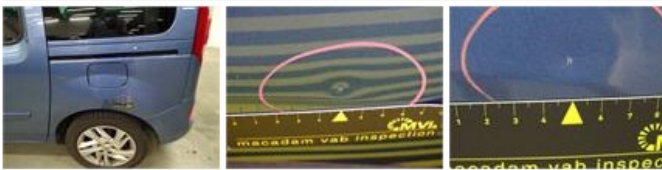
Door R R, Dent(s), Acceptable 0,00

No pictures to display

Bumper R, Scratch(es), LI - Repair and paint (complete) 211,80



Wing R L, Dent(s) and scratch(es), LI - Repair and paint (complete) 308,20



Roof, Scratch(es), 67 - Polish 0,00

No pictures to display