



MERCEDES GLA: 1JRZ769

Vinnumber:	WDC1569121J104294	Versionname:	GLA 180 CDI 109PK
First Registrationdate:	11/02/2015	Fiscalpower:	
Expertise Mileage:	83761	Power Kw:	80
Bodytype:		Body color:	Brown
Gearbox:	Automatic	Paint type:	Metalic
Transmission:	Front	Rims summer:	Aluminium
Fueltype:	Diesel	Oil level:	OK
Battery functioning:	Yes	Parking lot:	1114
Number of doors:	5		
Number of seats:	5		
Number head rests:	1		
Rims summer:	Aluminium		
Category:	Passenger Car		
Oil level:	OK		
Registration Certificate Car (BE):	Yes		

Options

Radio CD		Seats electric F L	
GPS storage	HD	Sun Roof electric	
GPS storage		Panoramic roof	
Windows electric F		Central consol F	
Windows electric R		Front parking sensors	
Cruise Control		Rear parking sensors	
Steering wheel multifunctional		Type of Tow bar	No Tow bar
Seats F heated			
Radio multimedia			
Type of headlighting	Headlighting Xenon		
Type of GPS	GPS big screen color		
Type of Lining	Lining leather		
Type of climate control	Manual climate control		

Limited Technical Inspection

Airco functioning	OK	Battery functioning	Yes
Tires wear profile	OK	Power steering	Yes
Idle position	OK	Sound engine	OK
Engine startingtime	OK	Clutch test	OK
Exhaust gass	OK	Wiper fluid level	OK
Handbrake	OK	Transmission	OK
		Lighting	OK
		Wiperblades	OK

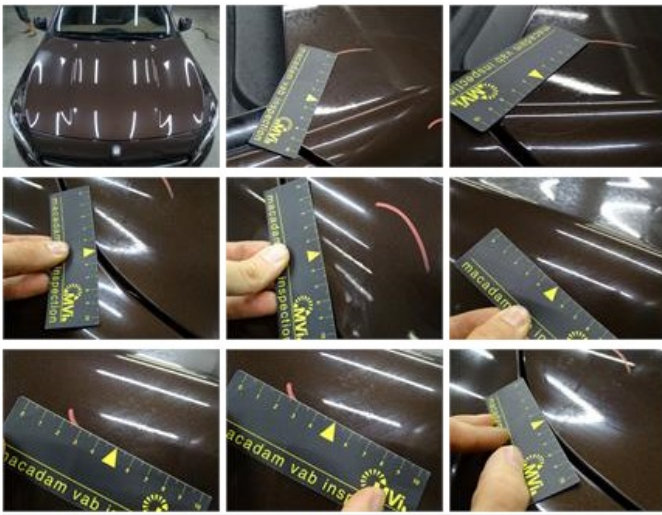
Degree of wear

235/45/19/99 V LightMetal				
Winter tyres:	Fr.L.	Michelin: 3 mm	Fr.R.	Michelin: 3 mm
	Re.L.	Michelin: 6 mm	Re.R.	Michelin: 6 mm

Assistance equipment

Repair kit	Yes	Compressor	Yes
Number of charging cables (normal)	0		
Number of charging cables (rapid charge)	0		

Total cost ex VAT	2264,11
Bonnet, Chemical polution, LI - Repair and paint (complete)	348,09



Alloy rim F R polished, Scratch(es), LI - Repair and paint (complete) 95,00



Door F L, Scratch(es), LI - Repair and paint (complete) 382,02



Wing R R, Chemical polution, LI - Repair and paint (complete) 369,84



Door F R, Scratch(es), Acceptable 0,00

No pictures to display

Alloy rim F L polished, Scratch(es), LI - Repair and paint (complete) 95,00



Alloy rim R R polished, Scratch(es), LI - Repair and paint (complete) 95,00



Alloy rim R L polished, Scratch(es), LI - Repair and paint (complete) 95,00



Bumper R, Dent(s) and scratch(es), LI - Repair and paint (complete) 254,16



Door R R, Scratch(es), Acceptable 0,00

No pictures to display

Roof pillar L, Dent(s), Acceptable 0,00

No pictures to display

Tailgate, Scratch(es), Acceptable 0,00

No pictures to display

Boot cover, Missing, E - Replace 60,00

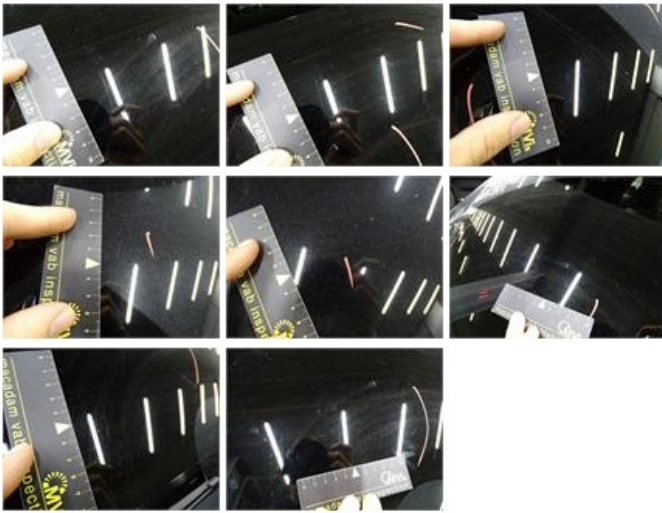


Interior, Dirty, Chemical cleaning 50,00



Rear window, Scratch(es), E - Replace 420,00





Bumper F, Scratch(es), Acceptable	0,00
<i>No pictures to display</i>	
Door R L, Scratch(es), Acceptable	0,00
<i>No pictures to display</i>	
Wing F R, Chemical polution, Acceptable	0,00
<i>No pictures to display</i>	