



**AUDI A4 AVANT: 1SKA177**

Vinnumber:	<b>WAUZZZF41HA173184</b>	Versionname:	<b>2.0 TDi 140kW S tronic S line</b>
First Registrationdate:	<b>29/05/2017</b>	Fiscalpower:	
Expertise Mileage:	<b>25592</b>	Power Kw:	<b>140</b>
Bodytype:	<b>Break</b>	Body color:	<b>White</b>
Gearbox:	<b>Automatic</b>	Paint type:	<b>Metalic</b>
Transmission:		Rims summer:	<b>Aluminium</b>
Fueltype:	<b>Diesel</b>	Oil level:	<b>OK</b>
Battery functioning:	<b>Yes</b>	Parking lot:	<b>1709</b>
Number of doors:	<b>5</b>		
Number of seats:	<b>5</b>		
Number head rests:	<b>5</b>		
Rims summer:	<b>Aluminium</b>		
Category:	<b>Passenger Car</b>		
Oil level:	<b>OK</b>		
Registration Certificate Car (BE):	<b>Yes</b>		

**Options**

Radio CD		Seats electric F L	
Windows electric F		Seats electric F R	
Windows electric R		Sun Roof electric	
Cruise Control		Panoramic roof	
Steering wheel multifunctional		Central consol F	
Seats F heated		Luggage cover	
Radio multimedia		Front parking sensors	
Type of headlighting	<b>Headlighting LED</b>	Rear parking sensors	
Type of GPS	<b>GPS big screen color</b>	Type of Tow bar	<b>No Tow bar</b>
Type of Lining	<b>Lining leather</b>		
Type of climate control	<b>Autom climate control</b>		
Sport seats			

**Limited Technical Inspection**

Airco functioning	<b>OK</b>	Battery functioning	<b>Yes</b>
Tires wear profile	<b>OK</b>	Power steering	<b>Yes</b>
Idle position	<b>OK</b>	Sound engine	<b>OK</b>
Engine startingtime	<b>OK</b>	Clutch test	<b>OK</b>
Exhaust gass	<b>OK</b>	Wiper fluid level	<b>OK</b>
Handbrake	<b>OK</b>	Transmission	<b>OK</b>
		Lighting	<b>OK</b>
		Wiperblades	<b>OK</b>

**Degree of wear**

	<b>245/40/18/93 Y LightMetal</b>			
Summer tyres:	Fr.L.	<b>Continental: 4 mm</b>	Fr.R.	<b>Continental: 4 mm</b>
	Re.L.	<b>Continental: 6 mm</b>	Re.R.	<b>Continental: 6 mm</b>

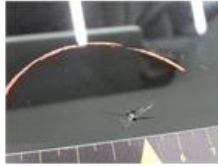
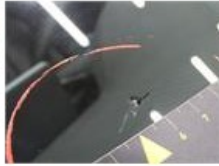
**Assistance equipment**

Emergency spare wheel **Yes**

Total cost ex VAT	318,35
Outer door handle F R, Scratch(es), Acceptable	0,00
<i>No pictures to display</i>	
Boot carpet, Dirty, Cleaning	0,00



Windscreen, Crack, E - Replace 0,00



Door R L, Scratch(es), Acceptable 0,00

No pictures to display

Bumper F, Scratch(es), Acceptable 0,00

No pictures to display

Wing F R, Dent(s) and scratch(es), LI - Repair and paint (complete) 0,00



Door R R, Scratch(es), LI - Repair and paint (complete) 318,35

