



**BMW 4 Gran Coupe: 1HYT678**

Vinnumber:	<b>WBA4B510X0GD69396</b>	Versionname:	<b>4 GRAN COUPE 420dAS 184PK Aut.</b>
First Registrationdate:	<b>31/10/2014</b>	Fiscalpower:	
Expertise Mileage:	<b>167140</b>	Power Kw:	<b>135</b>
Bodytype:		Body color:	<b>Dark Blue</b>
Gearbox:	<b>Automatic</b>	Paint type:	<b>Metalic</b>
Transmission:	<b>Back</b>	Rims summer:	<b>Aluminium</b>
Fueltype:	<b>Diesel</b>	Oil level:	<b>OK</b>
Battery functioning:	<b>Yes</b>	Parking lot:	<b>2433</b>
Number of doors:	<b>5</b>		
Number of seats:	<b>5</b>		
Number head rests:	<b>4</b>		
Rims summer:	<b>Aluminium</b>		
Category:	<b>Passenger Car</b>		
Oil level:	<b>OK</b>		
Registration Certificate Car (BE):	<b>Yes</b>		

**Options**

Radio CD		Sun Roof electric	
GPS storage	<b>HD</b>	Central consol F	
GPS storage		Luggage cover	
Windows electric F		Front parking sensors	
Windows electric R		Rear parking sensors	
Cruise Control		Type of Tow bar	<b>Tow bar fixed</b>
Steering wheel multifunctional			
Seats F heated			
Radio multimedia			
Type of headlighting	<b>Headlighting Xenon</b>		
Type of GPS	<b>GPS big screen color</b>		
Type of Lining	<b>Lining leather</b>		
Type of climate control	<b>Autom climate control</b>		

**Limited Technical Inspection**

Airco functioning	<b>OK</b>	Battery functioning	<b>Yes</b>
Tires wear profile	<b>OK</b>	Power steering	<b>Yes</b>
Idle position	<b>OK</b>	Sound engine	<b>OK</b>
Engine startingtime	<b>OK</b>	Clutch test	<b>OK</b>
Exhaust gass	<b>OK</b>	Wiper fluid level	<b>OK</b>
Handbrake	<b>OK</b>	Transmission	<b>OK</b>
		Lighting	<b>OK</b>
		Wiperblades	<b>OK</b>

**Degree of wear**

<b>225/40/19/89 Y LightMetal</b>				
Summer tyres:	Fr.L.	<b>Continental: 5 mm</b>	Fr.R.	<b>Continental: 5 mm</b>
	Re.L.	<b>Bridgestone: 5 mm</b>	Re.R.	<b>Bridgestone: 5 mm</b>

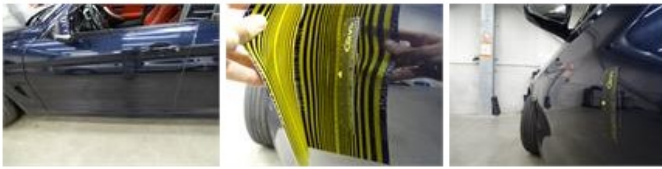
**Assistance equipment**

Number of charging cables (normal)	<b>0</b>	Runflat	<b>Yes</b>
Number of charging cables (rapid charge)	<b>0</b>		

<b>Total cost ex VAT</b>	<b>1424,58</b>
<b>Wing R L, Dent(s) and scratch(es), LI - Repair and paint (complete)</b>	<b>369,84</b>



Door F L, Dent(s), PDR - Paintless dent repair 63,00



Interior, Dirty, Cleaning 50,00



Alloy rim R R polished, Scratch(es), Acceptable 0,00

No pictures to display

Bonnet, Stone chip(s), Acceptable 0,00

No pictures to display

Wing F L, Scratch(es), Acceptable 0,00

No pictures to display

Roof pillar R, Dent(s), Acceptable 0,00

No pictures to display

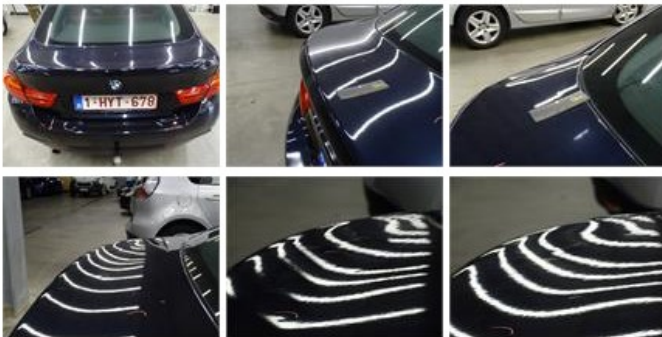
Door R L, Dent(s) and scratch(es), Acceptable 0,00

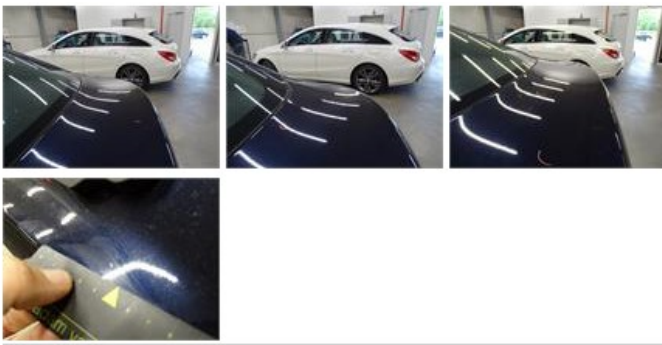
No pictures to display

Alloy rim F L polished, Scratch(es), LI - Repair and paint (complete) 95,00



Tailgate, Bad repair, Acceptable 0,00





Wing F R, Scratch(es), Acceptable 0,00

No pictures to display

Roof, Hail damage, PDR - Hail 0,00



Bumper R, Scratch(es), Acceptable 0,00

No pictures to display

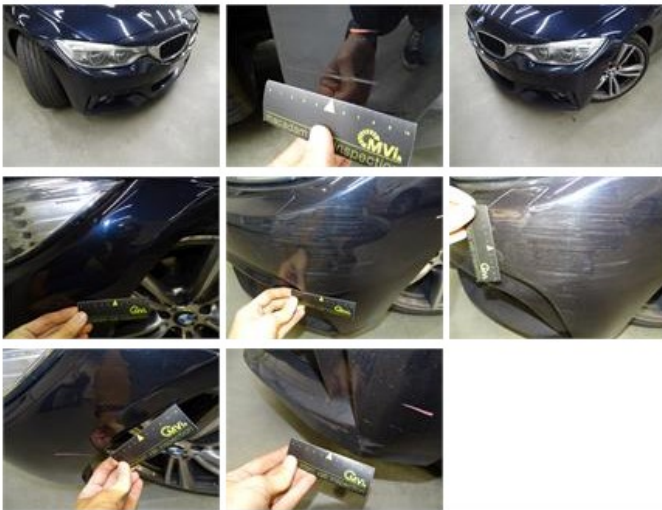
Roof pillar L, Dent(s), Acceptable 0,00

No pictures to display

Alloy rim F R polished, Scratch(es), LI - Repair and paint (complete) 95,00



Bumper F, Scratch(es), LI - Repair and paint (complete) 254,16



Door R R, Dent(s) and scratch(es), LI - Repair and paint (complete) 382,02



Door F R, Dent(s) and scratch(es), Acceptable	0,00
<i>No pictures to display</i>	
Rocker panel inner R L, Dent(s), LI - Repair and paint (complete)	115,56

