


**RENAULT SCENIC: 1LEX128**

Vinnumber:	<b>VF1JZ14K653407211</b>	Versionname:	<b>1.5 ENERGY DCI 110 LIFE</b>
First Registrationdate:	<b>9/09/2015</b>	Fiscalpower:	
Expertise Mileage:	<b>57782</b>	Power Kw:	<b>81</b>
Bodytype:		Body color:	<b>Silver</b>
Gearbox:	<b>MAN 6 VIT</b>	Paint type:	<b>Metalic</b>
Transmission:	<b>Front</b>	Rims summer:	<b>Steel</b>
Fueltype:	<b>Diesel</b>	Oil level:	<b>OK</b>
Battery functioning:	<b>Yes</b>	Parking lot:	<b>3105</b>
Number of doors:	<b>5</b>		
Number of seats:	<b>5</b>		
Number head rests:	<b>5</b>		
Rims summer:	<b>Steel</b>		
Category:	<b>Passenger Car</b>		
Oil level:	<b>OK</b>		
Registration Certificate Car (BE):	<b>Yes</b>		

**Options**

Radio CD	Central consol F
Windows electric F	Luggage cover
Cruise Control	Type of Tow bar
Steering wheel multifunctional	<b>No Tow bar</b>
Radio multimedia	
Type of headlighting	<b>Headlighting Halogen</b>
Type of GPS	<b>GPS big screen color</b>
Type of Lining	<b>Lining fabrics</b>
Type of climate control	<b>Manual climate control</b>

**Limited Technical Inspection**

Airco functioning	<b>OK</b>	Battery functioning	<b>Yes</b>
Tires wear profile	<b>OK</b>	Power steering	<b>Yes</b>
Idle position	<b>OK</b>	Sound engine	<b>OK</b>
Engine startingtime	<b>OK</b>	Clutch test	<b>OK</b>
Exhaust gass	<b>OK</b>	Wiper fluid level	<b>OK</b>
Handbrake	<b>OK</b>	Transmission	<b>OK</b>
		Lighting	<b>OK</b>
		Wiperblades	<b>OK</b>

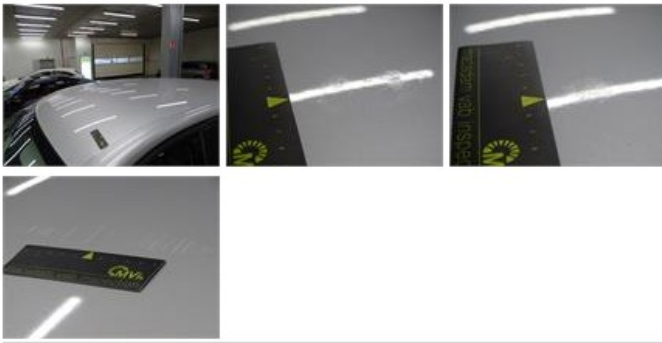
**Degree of wear**

	<b>205/60/16/92 V Steel</b>			
Summer tyres:	Fr.L.	<b>Michelin: 3 mm</b>	Fr.R.	<b>Michelin: 3 mm</b>
	Re.L.	<b>Michelin: 4 mm</b>	Re.R.	<b>Michelin: 4 mm</b>

**Assistance equipment**

Spare wheel	<b>Yes</b>	Jack	<b>Yes</b>
Number of charging cables (normal)	<b>0</b>		
Number of charging cables (rapid charge)	<b>0</b>		

Total cost ex VAT	1401,50
Bumper F, Scratch(es), Acceptable	0,00
<i>No pictures to display</i>	
Roof, Chemical polution, LI - Repair and paint (complete)	481,50



Door R L, Scratch(es), Acceptable 0,00

No pictures to display

Wheel cover F R, Broken, E - Replace 30,00



Rear window, Scratch(es), E - Replace 370,00



Wing R R, Scratch(es), LI - Repair and paint (complete) 308,20



Door F R, Scratch(es), Acceptable 0,00

No pictures to display

Bumper R, Scratch(es), LI - Repair and paint (complete) 211,80

