



VOLVO V40: 1HPG999

Vinnumber:	YV1MV8481F2189829	Versionname:	V40 D2 Base 115PK
First Registrationdate:	4/09/2014	Fiscalpower:	
Expertise Mileage:	121164	Power Kw:	84
Bodytype:		Body color:	Blue
Gearbox:	MAN 6 VIT	Paint type:	Metalic
Transmission:		Rims summer:	Aluminium
Fueltype:	Diesel	Oil level:	OK
Battery functioning:	Yes	Parking lot:	2806
Number of doors:	5		
Number of seats:	5		
Number head rests:	5		
Rims summer:	Aluminium		
Category:	Passenger Car		
Oil level:	OK		
Registration Certificate Car (BE):	Yes		

Options

Radio CD	Central consol F
Windows electric F	Luggage cover
Windows electric R	Rear parking sensors
Cruise Control	Type of Tow bar
Steering wheel multifunctional	No Tow bar
Radio multimedia	
Type of headlighting	Headlighting Halogen
Type of GPS	GPS big screen color
Type of Lining	Lining fabrics
Type of climate control	Manual climate control

Limited Technical Inspection

Airco functioning	OK	Battery functioning	Yes
Tires wear profile	OK	Power steering	Yes
Idle position	OK	Sound engine	OK
Engine startingtime	OK	Clutch test	OK
Exhaust gass	OK	Wiper fluid level	OK
Handbrake	OK	Transmission	OK
		Lighting	OK
		Wiperblades	OK

Degree of wear

205/55/16/91 H LightMetal			
Summer tyres:	Fr.L.	Fr.R.	Michelin: 5 mm
	Re.L.	Re.R.	Michelin: 5 mm

Assistance equipment

Emergency spare wheel	Yes	Jack	Yes
-----------------------	------------	------	------------

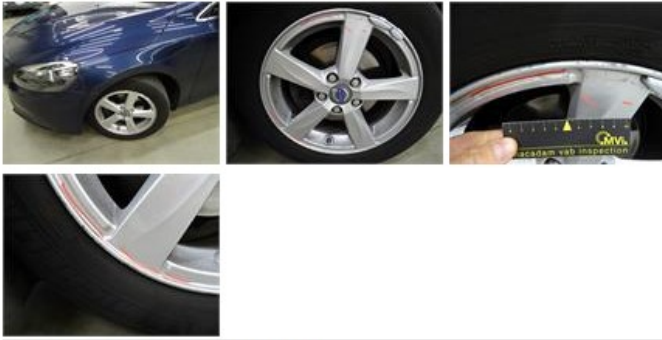
Total cost ex VAT	285,00
Rear spoiler, Bad repair, Acceptable	0,00



Door R R, Scratch(es), Acceptable 0,00

No pictures to display

Alloy rim F L, Scratch(es), LI - Repair and paint (complete) 95,00



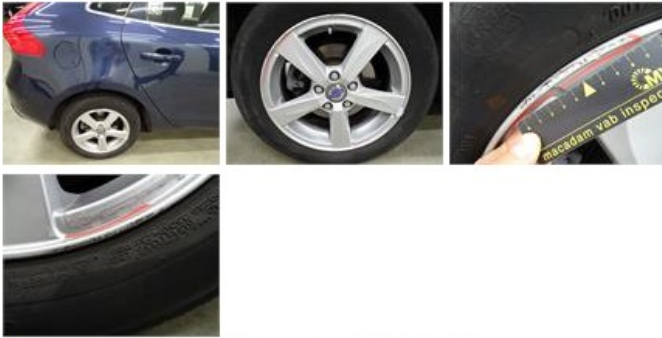
Rear window, Scratch(es), Acceptable 0,00

No pictures to display

Bonnet, Stone chip(s), Acceptable 0,00

No pictures to display

Alloy rim R R, Scratch(es), LI - Repair and paint (complete) 95,00



Alloy rim R L, Scratch(es), LI - Repair and paint (complete) 95,00



Windscreen, Stone chip(s), Acceptable 0,00

No pictures to display