


VOLKSWAGEN GOLF VARIANT: 1KLU807

Vinnumber:	WVWZZZAUZFP629183	Versionname:	1.6 CR TDI 77KW DSG BMT HIGHLINE
First Registrationdate:	29/05/2015	Fiscalpower:	
Expertise Mileage:	177995	Power Kw:	77
Bodytype:	Break	Body color:	Black
Gearbox:	Automatic	Paint type:	Metalic
Transmission:	Front	Rims summer:	Aluminium
Fueltype:	Diesel	Oil level:	OK
Battery functioning:	Yes	Parking lot:	4825
Number of doors:	5		
Number of seats:	5		
Number head rests:	5		
Rims summer:	Aluminium		
Category:	Passenger Car		
Oil level:	OK		
Registration Certificate Car (BE):	Yes		

Options

Radio CD		Sun Roof electric	
GPS storage	SD	Panoramic roof	
GPS storage		Central consol F	
Windows electric F		Luggage cover	
Windows electric R		Front parking sensors	
Cruise Control		Rear parking sensors	
Steering wheel multifunctional		Type of Tow bar	No Tow bar
Seats F heated			
Radio multimedia			
Type of headlighting	Headlighting Xenon		
Type of GPS	GPS big screen color		
Type of Lining	Lining semi-artificial leather		
Type of climate control	Autom climate control		

Limited Technical Inspection

Airco functioning	OK	Battery functioning	Yes
Tires wear profile	OK	Power steering	Yes
Idle position	OK	Sound engine	OK
Engine startingtime	OK	Clutch test	OK
Exhaust gass	OK	Wiper fluid level	OK
Handbrake	OK	Transmission	OK
		Lighting	OK
		Wiperblades	OK

Degree of wear

205/55/16/91 V LightMetal				
Summer tyres:	Fr.L.	Michelin: 4 mm	Fr.R.	Michelin: 4 mm
	Re.L.	Hankook: 5 mm	Re.R.	Hankook: 5 mm

Assistance equipment

Emergency spare wheel	Yes	Jack	Yes
Number of charging cables (normal)	0		
Number of charging cables (rapid charge)	0		

Total cost ex VAT	1819,10
Alloy rim F L, Scratch(es), LI - Repair and paint (complete)	95,00



Floor covering F L, Hole, Smart repair 64,32



Bonnet, Chemical polution, LI - Repair and paint (complete) 290,08



Door F R, Dent(s) and scratch(es), LI - Repair and paint (complete) 318,35



Bumper F, Scratch(es), Acceptable 0,00

No pictures to display

Wing R R, Dent(s), PDR - Paintless dent repair 63,00

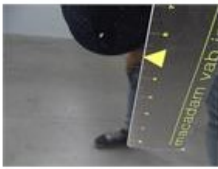


Bumper R, Scratch(es), LI - Repair and paint (complete) 211,80



Door R L, Dent(s) and scratch(es), LI - Repair and paint (complete) 318,35





Wing F R, Dent(s) and scratch(es), Acceptable 0,00

No pictures to display

Door F L, Scratch(es), Acceptable 0,00

No pictures to display

Wing R L, Scratch(es), LI - Repair and paint (complete) 308,20



Door R R, Scratch(es), Acceptable 0,00

No pictures to display

Ignition key, Missing, E - Replace 150,00

No pictures to display