



**RENAULT CLIO: 1LPN506**

Vinnumber:	<b>VF15R0J0A54118310</b>	Versionname:	<b>1.5 ENERGY DCI 90E EXPRESSION</b>
First Registrationdate:	<b>6/11/2015</b>	Fiscalpower:	
Expertise Mileage:	<b>65957</b>	Power Kw:	<b>66</b>
Bodytype:	<b>Hatchback</b>	Body color:	<b>Silver</b>
Gearbox:	<b>MAN 5 VIT</b>	Paint type:	<b>Metalic</b>
Transmission:	<b>Front</b>	Rims summer:	<b>Steel</b>
Fueltype:	<b>Diesel</b>	Oil level:	<b>OK</b>
Battery functioning:	<b>Yes</b>	Parking lot:	<b>4224</b>
Number of doors:	<b>5</b>		
Number of seats:	<b>5</b>		
Number head rests:	<b>5</b>		
Rims summer:	<b>Steel</b>		
Category:	<b>Passenger Car</b>		
Oil level:	<b>OK</b>		
Registration Certificate Car (BE):	<b>Yes</b>		

**Options**

GPS storage	<b>HD</b>	Luggage cover	
GPS storage		Rear parking sensors	
Windows electric F		Type of Tow bar	<b>No Tow bar</b>
Cruise Control			
Steering wheel multifunctional			
Radio multimedia			
Type of headlighting	<b>Headlighting Halogen</b>		
Type of GPS	<b>GPS big screen color</b>		
Type of Lining	<b>Lining fabrics</b>		
Type of climate control	<b>Manual climate control</b>		

**Limited Technical Inspection**

Airco functioning	<b>OK</b>	Battery functioning	<b>Yes</b>
Tires wear profile	<b>OK</b>	Power steering	<b>Yes</b>
Idle position	<b>OK</b>	Sound engine	<b>OK</b>
Engine startingtime	<b>OK</b>	Clutch test	<b>OK</b>
Exhaust gass	<b>OK</b>	Wiper fluid level	<b>OK</b>
Handbrake	<b>OK</b>	Transmission	<b>OK</b>
		Lighting	<b>OK</b>
		Wiperblades	<b>OK</b>

**Degree of wear**

<b>185/65/15/92 V Steel</b>				
Winter tyres:	Fr.L.	<b>Michelin: 3 mm</b>	Fr.R.	<b>Michelin: 3 mm</b>
	Re.L.	<b>Michelin: 5 mm</b>	Re.R.	<b>Michelin: 5 mm</b>

**Assistance equipment**

Repair kit	<b>Yes</b>	Compressor	<b>Yes</b>
Number of charging cables (normal)	<b>0</b>		
Number of charging cables (rapid charge)	<b>0</b>		

<b>Total cost ex VAT</b>	<b>2232,52</b>
<b>Door F R, Dent(s), PDR - Paintless dent repair</b>	<b>63,00</b>



Wheel cover F R, Scratch(es), E - Replace 24,00



Rocker panel inner R R, Dent(s), LI - Repair and paint (complete) 115,56



Roof, Dent(s), Acceptable 0,00

No pictures to display

Trunk lid covering R, Scratch(es), Acceptable 0,00

No pictures to display

Door R L, Dent(s), PDR - Paintless dent repair 63,00



Floor covering R, Hole, Smart repair 64,32



Door F L, Scratch(es), Acceptable 0,00

No pictures to display

Wheel cover F L, Scratch(es), E - Replace 24,00



Tailgate, Scratch(es), LI - Repair and paint (complete) 241,34





Bonnet, Dent(s) and scratch(es), LI - Repair and paint (complete)

232,06



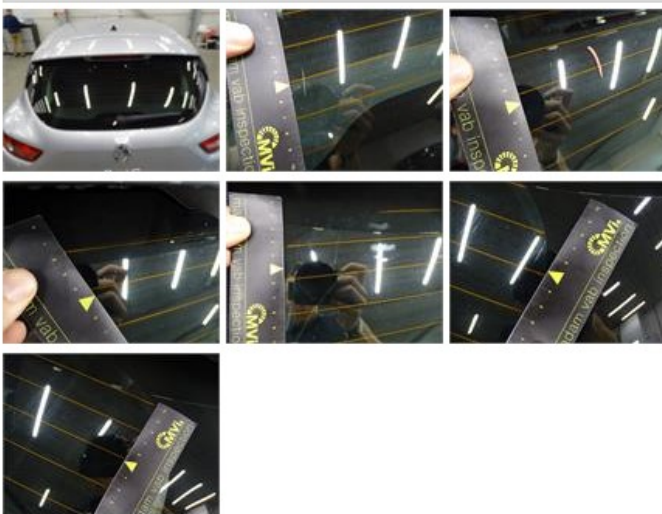
Wheel cover R R, Scratch(es), E - Replace

24,00



Rear window, Scratch(es), E - Replace

320,00



Bumper F, Scratch(es), Acceptable

0,00

No pictures to display

Wing R L, Dent(s) and scratch(es), LI - Repair and paint (complete)

318,56



Door R R, Dent(s) and scratch(es), LI - Repair and paint (complete)

254,68





Bumper R, Scratch(es), LI - Repair and paint (complete)

169,44



Wing R R, Dent(s) and scratch(es), LI - Repair and paint (complete)

318,56

