


MERCEDES CLA-CLASS: 1JUR815

Vinnumber:	WDD1173121N196693	Versionname:	1.5 CLA 180 CDI
First Registrationdate:	2/03/2015	Fiscalpower:	
Expertise Mileage:	117619	Power Kw:	80
Bodytype:		Body color	Black
Gearbox:	MAN 6 VIT	Body color	.
Transmission:	Front	Paint type	Metalic
Fueltype:	Diesel	Rims summer	Aluminium
Battery functioning	Yes	Oil level	OK
Number of doors	4	Parking lot	1111
Number of seats	5		
Number head rests	1		
Rims summer	Aluminium		
Category	Passenger Car		
Oil level	OK		
Registration Certificate Car (BE)	Yes		

Options

Radio CD		Central consol F	
GPS storage		Type of Tow bar	No Tow bar
GPS storage	SD		
Windows electric F			
Windows electric R			
Cruise Control			
Steering wheel multifunctional			
Type of headlighting	Headlighting Halogen		
Type of GPS	GPS big screen color		
Type of Lining	Lining semi-artificial leather		
Type of climate control	Manual climate control		
Level control			

Limited Technical Inspection

Airco functioning	OK	Battery functioning	Yes
Tires wear profile	OK	Power steering	Yes
Idle position	OK	Sound engine	OK
Engine startingtime	OK	Clutch test	OK
Exhaust gass	OK	Wiper fluid level	OK
Handbrake	OK	Transmission	OK
		Lighting	OK
		Wiperblades	OK

Degree of wear

	205/55/16/91 H LightMetal			
Summer tyres:	Fr.L.	Pirelli: 5 mm	Fr.R.	Pirelli: 5 mm
	Re.L.	Pirelli: 6 mm	Re.R.	Pirelli: 6 mm

Assistance equipment

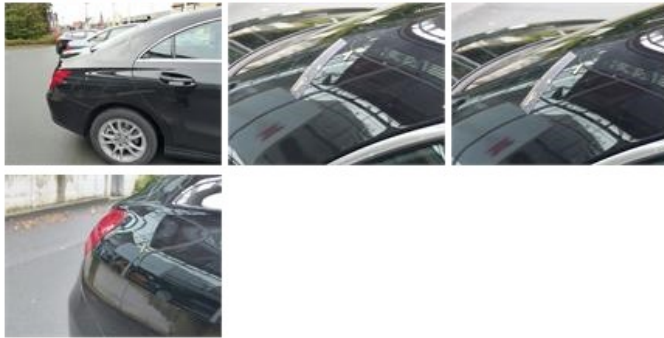
Repair kit	No	Compressor	Yes
Number of charging cables (normal)	0		
Number of charging cables (rapid charge)	0		

Total cost ex VAT	1071,03
Door panel R L, Hole, Smart repair	158,64



Wing R R, Dent(s), PDR - Paintless dent repair

82,80



Seat cover F L, Stain, Cleaning

25,00



Bumper R, Scratch(es), Acceptable

0,00



Sill outer L, Dent(s) and scratch(es), LI - Repair and paint (complete)

358,50



Seat cover F L, Worn, Acceptable

0,00



Bumper F, Scratch(es), It - Spot repair

115,56



Alloy rim R R, Scratch(es), LI - Repair and paint (complete)

95,00



Tyre repair kit, Missing, E - Replace

210,53



Seat cover F R, Stain, Cleaning

25,00



Wheel aperture R R, Scratch(es), Acceptable

0,00

