


RENAULT CLIO: 1LPP425

Vinnumber:	VF15R0J0A54118321	Versionname:	1.5 ENERGY DCI 90E EXPRESSION
First Registrationdate:	6/11/2015	Fiscalpower:	
Expertise Mileage:	71643	Power Kw:	66
Bodytype:	Hatchback	Body color:	Silver
Gearbox:	MAN 5 VIT	Paint type:	Metalic
Transmission:	Front	Rims summer:	Steel
Fueltype:	Diesel	Oil level:	OK
Battery functioning:	Yes	Parking lot:	3730
Number of doors:	5		
Number of seats:	5		
Number head rests:	5		
Rims summer:	Steel		
Category:	Passenger Car		
Oil level:	OK		
Registration Certificate Car (BE):	Yes		

Options

GPS storage	HD	Luggage cover	
GPS storage		Rear parking sensors	
Windows electric F		Type of Tow bar	No Tow bar
Cruise Control			
Steering wheel multifunctional			
Radio multimedia			
Type of headlighting	Headlighting Halogen		
Type of GPS	GPS big screen color		
Type of Lining	Lining fabrics		
Type of climate control	Manual climate control		

Limited Technical Inspection

Airco functioning	OK	Battery functioning	Yes
Tires wear profile	OK	Power steering	Yes
Idle position	OK	Sound engine	OK
Engine startingtime	OK	Clutch test	OK
Exhaust gass	OK	Wiper fluid level	OK
Handbrake	OK	Transmission	OK
		Lighting	OK
		Wiperblades	OK

Degree of wear

	185/65/15/92 V Steel			
Winter tyres:	Fr.L.	Michelin: 4 mm	Fr.R.	Michelin: 4 mm
	Re.L.	Michelin: 5 mm	Re.R.	Michelin: 5 mm

Assistance equipment

Repair kit	Yes	Compressor	Yes
Number of charging cables (normal)	0		
Number of charging cables (rapid charge)	0		

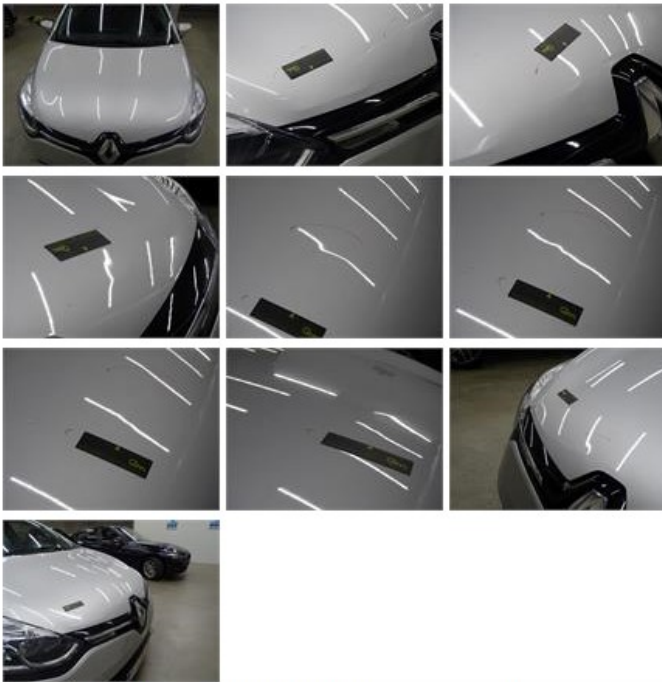
Total cost ex VAT	1061,38
Wing R L, Scratch(es), Acceptable	0,00
<i>No pictures to display</i>	
Wing R R, Dent(s) and scratch(es), LI - Repair and paint (complete)	246,56



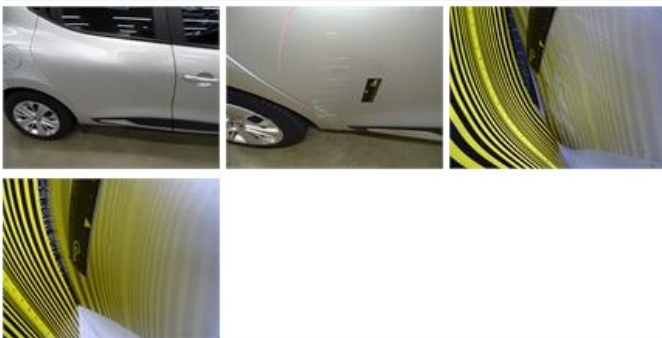
Door F L, Dent(s) and scratch(es), Acceptable 0,00

No pictures to display

Bonnet, Dent(s), LI - Repair and paint (complete) 232,06



Door R R, Dent(s) and scratch(es), LI - Repair and paint (complete) 254,68



Rearview mirror housing R, Scratch(es), Acceptable 0,00

No pictures to display

Bumper R, Dent(s) and scratch(es), LI - Repair and paint (complete) 169,44



Wheel cover R L, Scratch(es), E - Replace 24,00





Roof pillar L, Scratch(es), Acceptable 0,00

No pictures to display

Wheel cover R R, Scratch(es), Acceptable 0,00

No pictures to display

Door R L, Scratch(es), Acceptable 0,00

No pictures to display

Windscreen, Stone chip(s), Acceptable 0,00



Wheel cover F L, Scratch(es), E - Replace 24,00



Trunk lid covering R, Scratch(es), Smart repair 110,64



Bumper F, Dent(s) and scratch(es), Acceptable 0,00

No pictures to display