



BMW 2 ACTIVE TOURER: 1KCB413

Vinnumber:	WBA2C11080V342848	Versionname:	2.0 218D (100KW) ACTIVE TOURER
First Registrationdate:	30/03/2015	Fiscalpower:	
Expertise Mileage:	63310	Power Kw:	100
Bodytype:	SUV	Body color:	Blue
Gearbox:	Automatic	Paint type:	Metalic
Transmission:		Rims summer:	Aluminium
Fueltype:	Diesel	Oil level:	OK
Battery functioning:	Yes	Parking lot:	3112
Number of doors:	5		
Number of seats:	5		
Number head rests:	5		
Rims summer:	Aluminium		
Category:	Passenger Car		
Oil level:	OK		
Registration Certificate Car (BE):	Yes		

Options

Windows electric F	Central consol F
Windows electric R	Luggage cover
Cruise Control	Front parking sensors
Steering wheel multifunctional	Rear parking sensors
Seats F heated	Type of Tow bar
Radio multimedia	Tow bar removable
Type of headlighting	Headlighting Halogen
Type of GPS	GPS big screen color
Type of Lining	Lining leather
Type of climate control	Autom climate control
Head-up Display	
Sport seats	

Limited Technical Inspection

Airco functioning	OK	Battery functioning	Yes
Tires wear profile	OK	Power steering	Yes
Idle position	OK	Sound engine	OK
Engine startingtime	OK	Clutch test	OK
Exhaust gass	OK	Wiper fluid level	OK
Handbrake	OK	Transmission	OK
		Lighting	OK
		Wiperblades	OK

Degree of wear

205/55/17/95 V LightMetal				
Summer tyres:	Fr.L.	Michelin: 5 mm	Fr.R.	Michelin: 5 mm
	Re.L.	Hankook: 5 mm	Re.R.	Hankook: 5 mm

Assistance equipment

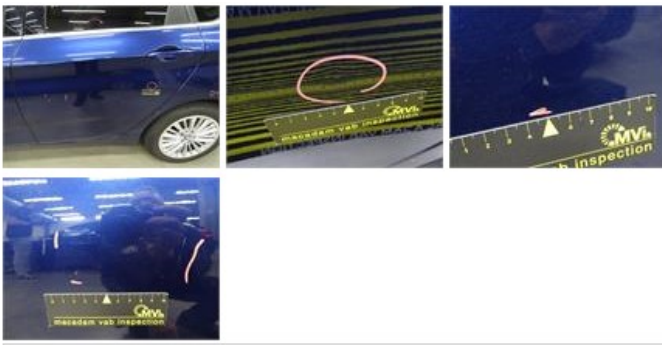
Emergency spare wheel	Yes
-----------------------	------------

Total cost ex VAT	1630,55
-------------------	---------

Wing R R, Scratch(es), Acceptable	0,00
-----------------------------------	------

No pictures to display

Door R L, Dent(s) and scratch(es), LI - Repair and paint (complete)	318,35
---	--------



Roof, Chemical polution, LI - Repair and paint (complete) 481,50



Wing R L, Scratch(es), Acceptable 0,00

No pictures to display

Alloy rim R R, Scratch(es), LI - Repair and paint (complete) 95,00



Door R R, Scratch(es), 67 - Polish 0,00

No pictures to display

Sill outer R, Scratch(es), LI - Repair and paint (complete) 310,50



Bumper F, Dent(s), Acceptable 0,00

No pictures to display

Alloy rim R L, Scratch(es), LI - Repair and paint (complete) 95,00



Alloy rim F L, Scratch(es), LI - Repair and paint (complete) 95,00





Alloy rim F R, Scratch(es), E - Replace

235,20



Door F R, Scratch(es), Acceptable

0,00

No pictures to display