



VOLKSWAGEN GOLF VII: AG8123

| | | | |
|------------------------------------|--------------------------|--------------|---------------------------------|
| Vinnumber: | WVWZZZAUZJW142080 | Versionname: | 1.6 TDi 85kW Comfortline |
| First Registrationdate: | 16/03/2018 | Fiscalpower: | |
| Expertise Mileage: | 70955 | Power Kw: | 85 |
| Bodytype: | | Body color: | Black |
| Gearbox: | MAN 5 VIT | Paint type: | Metalic |
| Transmission: | Front | Rims summer: | Aluminium |
| Fueltype: | Diesel | Oil level: | OK |
| Battery functioning: | Yes | Parking lot: | 4402 |
| Number of doors: | 5 | | |
| Number of seats: | 5 | | |
| Number head rests: | 5 | | |
| Rims summer: | Aluminium | | |
| Category: | Passenger Car | | |
| Oil level: | OK | | |
| Registration Certificate Car (BE): | Yes | | |

Options

| | | | |
|--------------------------------|------------------------------|-----------------------|-------------------|
| Radio CD | | Central consol F | |
| GPS storage | | Luggage cover | |
| GPS storage | SD | Front parking sensors | |
| Windows electric F | | Rear parking sensors | |
| Windows electric R | | Type of Tow bar | No Tow bar |
| Cruise Control | | | |
| Steering wheel multifunctional | | | |
| Radio multimedia | | | |
| Type of headlighting | Headlighting Halogen | | |
| Type of GPS | GPS big screen color | | |
| Type of Lining | Lining fabrics | | |
| Type of climate control | Autom climate control | | |

Limited Technical Inspection

| | | | |
|---------------------|-----------|---------------------|------------|
| Airco functioning | OK | Battery functioning | Yes |
| Tires wear profile | OK | Power steering | Yes |
| Idle position | OK | Sound engine | OK |
| Engine startingtime | OK | Clutch test | OK |
| Exhaust gass | OK | Wiper fluid level | OK |
| Handbrake | OK | Transmission | OK |
| | | Lighting | OK |
| | | Wiperblades | OK |

Degree of wear

| | | | | |
|----------------------------------|-------|-----------------------|-------|-----------------------|
| 205/55/16/91 V LightMetal | | | | |
| Summer tyres: | Fr.L. | Michelin: 4 mm | Fr.R. | Michelin: 4 mm |
| | Re.L. | Michelin: 5 mm | Re.R. | Michelin: 5 mm |

Assistance equipment

| | | | |
|--|------------|------------|------------|
| Repair kit | Yes | Compressor | Yes |
| Number of charging cables (normal) | 0 | | |
| Number of charging cables (rapid charge) | 0 | | |

| | |
|--|----------------|
| Total cost ex VAT | 1566,43 |
| Bumper F, Dent(s) and scratch(es), LI - Repair and paint (complete) | 211,80 |



Trunk lid covering R, Scratch(es), Smart repair

110,64



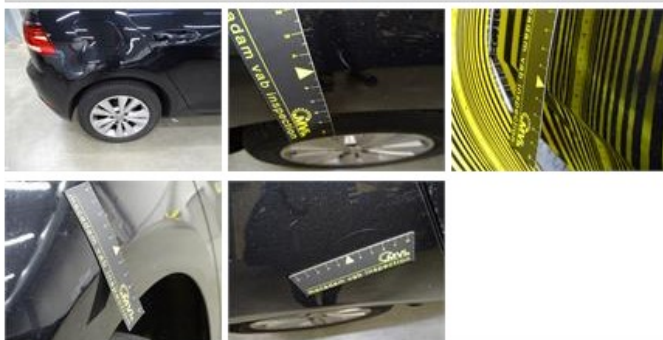
Bumper R, Scratch(es), LI - Repair and paint (complete)

211,80



Wing R R, Dent(s) and scratch(es), LI - Repair and paint (complete)

308,20



Rear spoiler, Chemical pollution, Acceptable

0,00

No pictures to display

Door R R, Scratch(es), Acceptable

0,00

No pictures to display

Tailgate, Dent(s), Acceptable

0,00

No pictures to display

Door F L, Dent(s) and scratch(es), LI - Repair and paint (complete)

318,35



Rearview mirror housing R, Scratch(es), LI - Repair and paint (complete) 115,56



Door R L, Scratch(es), Acceptable 0,00

No pictures to display

Bonnet, Dent(s) and scratch(es), LI - Repair and paint (complete) 290,08

