



**BMW 2 GRAN TOURER: 1LGK930**

|                                    |                          |              |                             |
|------------------------------------|--------------------------|--------------|-----------------------------|
| Vinnumber:                         | <b>WBA2E310605C01141</b> | Versionname: | <b>1.5 216D GRAN TOURER</b> |
| First Registrationdate:            | <b>22/09/2015</b>        | Fiscalpower: |                             |
| Expertise Mileage:                 | <b>35838</b>             | Power Kw:    | <b>85</b>                   |
| Bodytype:                          |                          | Body color:  | <b>Grey</b>                 |
| Gearbox:                           | <b>MAN 6 VIT</b>         | Paint type:  | <b>Metalic</b>              |
| Transmission:                      | <b>Front</b>             | Rims summer: | <b>Aluminium</b>            |
| Fueltype:                          | <b>Diesel</b>            | Oil level:   | <b>OK</b>                   |
| Battery functioning:               | <b>Yes</b>               | Parking lot: | <b>2805</b>                 |
| Number of doors:                   | <b>5</b>                 |              |                             |
| Number of seats:                   | <b>5</b>                 |              |                             |
| Number head rests:                 | <b>5</b>                 |              |                             |
| Rims summer:                       | <b>Aluminium</b>         |              |                             |
| Category:                          | <b>Passenger Car</b>     |              |                             |
| Oil level:                         | <b>OK</b>                |              |                             |
| Registration Certificate Car (BE): | <b>Yes</b>               |              |                             |

**Options**

|                                |                              |                       |                   |
|--------------------------------|------------------------------|-----------------------|-------------------|
| Radio CD                       |                              | Central consol F      |                   |
| GPS storage                    |                              | Luggage cover         |                   |
| GPS storage                    | <b>HD</b>                    | Front parking sensors |                   |
| Windows electric F             |                              | Rear parking sensors  |                   |
| Windows electric R             |                              | Type of Tow bar       | <b>No Tow bar</b> |
| Cruise Control                 |                              |                       |                   |
| Steering wheel multifunctional |                              |                       |                   |
| Radio multimedia               |                              |                       |                   |
| Type of headlighting           | <b>Headlighting LED</b>      |                       |                   |
| Type of GPS                    | <b>GPS big screen color</b>  |                       |                   |
| Type of Lining                 | <b>Lining leather</b>        |                       |                   |
| Type of climate control        | <b>Autom climate control</b> |                       |                   |

**Limited Technical Inspection**

|                     |           |                     |            |
|---------------------|-----------|---------------------|------------|
| Airco functioning   | <b>OK</b> | Battery functioning | <b>Yes</b> |
| Tires wear profile  | <b>OK</b> | Power steering      | <b>Yes</b> |
| Idle position       | <b>OK</b> | Sound engine        | <b>OK</b>  |
| Engine startingtime | <b>OK</b> | Clutch test         | <b>OK</b>  |
| Exhaust gass        | <b>OK</b> | Wiper fluid level   | <b>OK</b>  |
| Handbrake           | <b>OK</b> | Transmission        | <b>OK</b>  |
|                     |           | Lighting            | <b>OK</b>  |
|                     |           | Wiperblades         | <b>OK</b>  |

**Degree of wear**

|                                  |       |                      |       |                      |
|----------------------------------|-------|----------------------|-------|----------------------|
| <b>205/60/16/92 V LightMetal</b> |       |                      |       |                      |
| Summer tyres:                    | Fr.L. | <b>Hankook: 5 mm</b> | Fr.R. | <b>Hankook: 5 mm</b> |
|                                  | Re.L. | <b>Hankook: 4 mm</b> | Re.R. | <b>Hankook: 4 mm</b> |

**Assistance equipment**

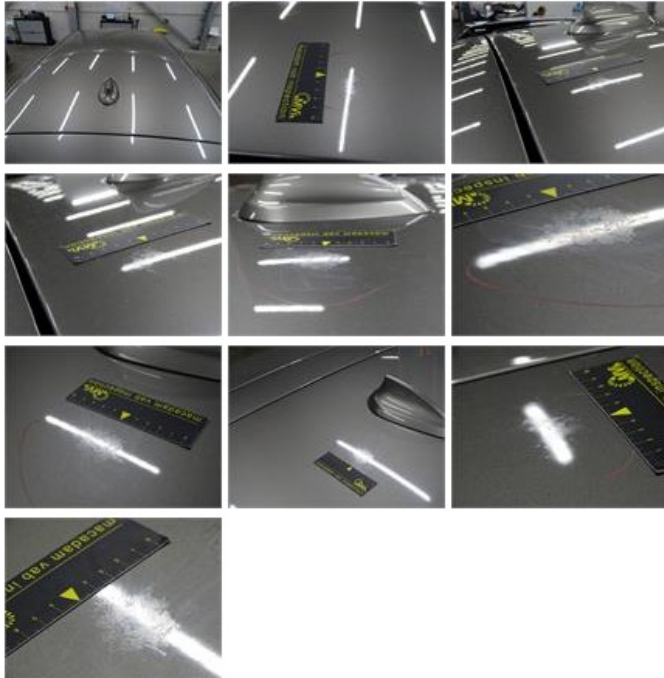
|  |            |            |            |
|--|------------|------------|------------|
| Repair kit                               | <b>Yes</b> | Compressor | <b>Yes</b> |
| Number of charging cables (normal)       | <b>0</b>   |            |            |
| Number of charging cables (rapid charge) | <b>0</b>   |            |            |

|  |               |
|--|---------------|
| <b>Total cost ex VAT</b>   | <b>799,85</b> |
| <b>Door F L, Dent(s) and scratch(es), LI - Repair and paint (complete)</b> | <b>318,35</b> |



Roof, Chemical polution, LI - Repair and paint (complete)

481,50



|  |      |
|--|------|
| Alloy rim R R, Scratch(es), Acceptable | 0,00 |
| <i>No pictures to display</i>          |      |
| Wing R R, Scratch(es), Acceptable      | 0,00 |
| <i>No pictures to display</i>          |      |
| Bumper F, Scratch(es), Acceptable      | 0,00 |
| <i>No pictures to display</i>          |      |
| Bumper R, Scratch(es), Acceptable      | 0,00 |
| <i>No pictures to display</i>          |      |
| Wing R L, Scratch(es), Acceptable      | 0,00 |
| <i>No pictures to display</i>          |      |
| Wing F L, Dent(s), Acceptable          | 0,00 |
| <i>No pictures to display</i>          |      |
| Wing F R, Scratch(es), Acceptable      | 0,00 |
| <i>No pictures to display</i>          |      |
| Alloy rim F L, Scratch(es), Acceptable | 0,00 |
| <i>No pictures to display</i>          |      |