


LAND ROVER DISCOVERY 4: 1HXP370

Vinnumber:	SALLAAM6FA738216	Versionname:	3.0 TDV6 HSE C-SHIFT AUTO 4WD
First Registrationdate:	22/10/2014	Fiscalpower:	
Expertise Mileage:	69559	Power Kw:	155
Bodytype:	MPV	Body color:	Brown
Gearbox:	Automatic	Paint type:	Metalic
Transmission:		Rims summer:	Aluminium
Fueltype:	Diesel	Oil level:	OK
Battery functioning:	Yes	Parking lot:	2602
Number of doors:	5		
Number of seats:	5		
Number head rests:	5		
Rims summer:	Aluminium		
Category:	Passenger Car		
Oil level:	OK		
Registration Certificate Car (BE):	Yes		

Options

Radio CD		Seats electric F L	
Windows electric F		Seats electric F R	
Windows electric R		Central consol F	
Cruise Control		Front parking sensors	
Steering wheel multifunctional		Rear parking sensors	
Seats F heated		Type of Tow bar	Tow bar removable
Type of headlighting	Headlighting Halogen		
Type of GPS	GPS big screen color		
Type of Lining	Lining leather		
Type of climate control	Autom climate control		
Level control			

Limited Technical Inspection

Airco functioning	OK	Battery functioning	Yes
Tires wear profile	OK	Power steering	Yes
Idle position	OK	Sound engine	OK
Engine startingtime	OK	Clutch test	OK
Exhaust gass	OK	Wiper fluid level	OK
Handbrake	OK	Transmission	OK
		Lighting	OK
		Wiperblades	OK

Degree of wear

255/55/19/111 V LightMetal				
Summer tyres:	Fr.L.	Continental: 7 mm	Fr.R.	Continental: 7 mm
	Re.L.	Continental: 7 mm	Re.R.	Continental: 7 mm

Assistance equipment

Spare wheel	Yes
-------------	------------

Total cost ex VAT 1482,95

Alloy rim F R, Scratch(es), LI - Repair and paint (complete) 95,00



Door F L, Scratch(es), 67 - Polish 0,00

No pictures to display

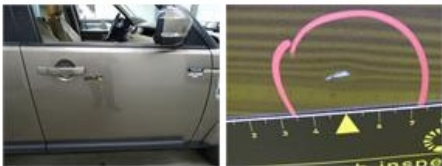
Bonnet, Chemical polution, LI - Repair and paint (complete) 348,09



Luggage space cover, Missing, E - Replace 288,00



Door F R, Dent(s) and scratch(es), LI - Repair and paint (complete) 382,02



Wing R R, Dent(s) and scratch(es), LI - Repair and paint (complete) 369,84



Door R L, Scratch(es), 67 - Polish 0,00

No pictures to display

Bumper R, Dent(s) and scratch(es), LI - Repair and paint (complete) 0,00

