


FORD C-MAX: 1GKM867

| | | | |
|------------------------------------|--------------------------|--------------|-------------------------------|
| Vinnumber: | WF0JXXWPBJEY53747 | Versionname: | C-MAX Trend St/St 95PK |
| First Registrationdate: | 4/03/2014 | Fiscalpower: | |
| Expertise Mileage: | 192700 | Power Kw: | 70 |
| Bodytype: | | Body color: | Light Brown |
| Gearbox: | MAN 6 VIT | Paint type: | Metalic |
| Transmission: | Front | Rims summer: | Aluminium |
| Fueltype: | Diesel | Oil level: | OK |
| Battery functioning: | Yes | Parking lot: | 1304 |
| Number of doors: | 5 | | |
| Number of seats: | 5 | | |
| Number head rests: | 5 | | |
| Rims summer: | Aluminium | | |
| Category: | Passenger Car | | |
| Oil level: | OK | | |
| Registration Certificate Car (BE): | Yes | | |

Options

| | | | |
|--------------------------------|-------------------------------|----------------------|----------------------|
| Radio CD | | Luggage cover | |
| GPS storage | SD | Rear parking sensors | |
| GPS storage | | Type of Tow bar | Tow bar fixed |
| Windows electric F | | | |
| Windows electric R | | | |
| Steering wheel multifunctional | | | |
| Radio multimedia | | | |
| Type of headlighting | Headlighting Halogen | | |
| Type of GPS | GPS big screen color | | |
| Type of Lining | Lining fabrics | | |
| Type of climate control | Manual climate control | | |

Limited Technical Inspection

| | | | |
|---------------------|-----------|---------------------|------------|
| Airco functioning | OK | Battery functioning | Yes |
| Tires wear profile | OK | Power steering | Yes |
| Idle position | OK | Sound engine | OK |
| Engine startingtime | OK | Clutch test | OK |
| Exhaust gass | OK | Wiper fluid level | OK |
| Handbrake | OK | Transmission | OK |
| | | Lighting | OK |
| | | Wiperblades | OK |

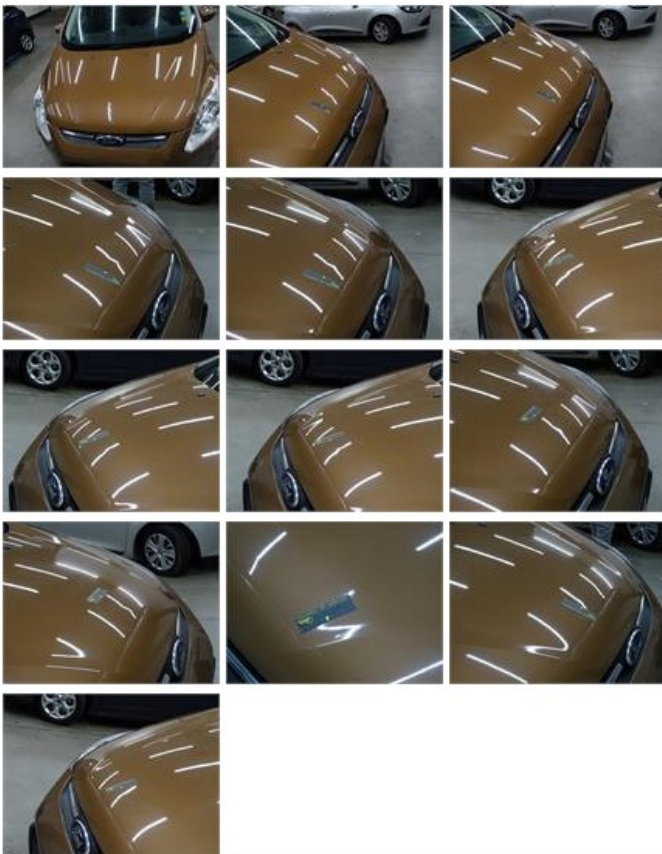
Degree of wear

| | | | | |
|----------------------------------|-------|--------------------|-------|--------------------|
| 215/55/16/93 V LightMetal | | | | |
| Summer tyres: | Fr.L. | Fulda: 3 mm | Fr.R. | Fulda: 3 mm |
| | Re.L. | Fulda: 4 mm | Re.R. | Fulda: 4 mm |

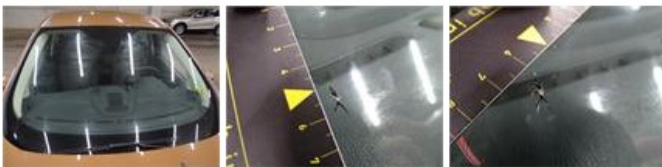
Assistance equipment

| | |
|--|------------|
| Emergency spare wheel | Yes |
| Number of charging cables (normal) | 0 |
| Number of charging cables (rapid charge) | 0 |

| | |
|---|---------|
| Total cost ex VAT | 1549,80 |
| Door R R, Scratch(es), Acceptable | 0,00 |
| <i>No pictures to display</i> | |
| Bonnet, Deformed / Strained, LI - Repair and paint (complete) | 290,08 |



Windscreen, Stone chip(s), Windscreen repair 58,80



Wing R L, Dent(s) and scratch(es), LI - Repair and paint (complete) 356,20



Rocker panel inner R L, Dent(s), LI - Repair and paint (complete) 115,56



Door panel R L, Worn, Acceptable 0,00



Bumper R, Scratch(es), LI - Repair and paint (complete)

211,80



Wing F R, Bad repair, Acceptable

0,00



Steering wheel, Worn, Acceptable

0,00



Tailgate, Scratch(es), Acceptable

0,00

No pictures to display

Rocker panel inner R R, Dent(s), LI - Repair and paint (complete)

115,56



Door R L, Scratch(es), Acceptable

0,00

No pictures to display

Alloy rim F L, Scratch(es), LI - Repair and paint (complete)

95,00



Door F L, Scratch(es), Acceptable

0,00

No pictures to display

Door panel R R, Worn, Acceptable

0,00



Alloy rim F R, Scratch(es), LI - Repair and paint (complete)

95,00



Door F R, Bad repair, Acceptable

0,00



Bumper F, Dent(s) and scratch(es), LI - Repair and paint (complete)

211,80



Roof pillar R, Chemical polution, 67 - Polish

0,00

No pictures to display