



MERCEDES C BREAK: 1LFY406

Vinnumber:	WDD2052371F266135	Versionname:	1.6 C 200 BLUETEC
First Registrationdate:	17/09/2015	Fiscalpower:	
Expertise Mileage:	48325	Power Kw:	100
Bodytype:		Body color:	Dark Blue
Gearbox:	Automatic	Paint type:	Metallic
Transmission:	Back	Rims summer:	Aluminium
Fueltype:	Diesel	Oil level:	OK
Battery functioning:	Yes	Parking lot:	4414
Number of doors:	5		
Number of seats:	5		
Number head rests:	5		
Rims summer:	Aluminium		
Category:	Passenger Car		
Oil level:	OK		
Registration Certificate Car (BE):	Yes		

Options

Radio CD	Sun Roof electric
Windows electric F	Panoramic roof
Windows electric R	Central consol F
Cruise Control	Luggage cover
Steering wheel multifunctional	Front parking sensors
Seats F heated	Rear parking sensors
Radio multimedia	Type of Tow bar
Type of headlighting	Tow bar fixed
Type of GPS	Headlighting LED
Type of Lining	GPS big screen color
Type of climate control	Lining leather
	Autom climate control

Limited Technical Inspection

Airco functioning	OK	Battery functioning	Yes
Tires wear profile	OK	Power steering	Yes
Idle position	OK	Sound engine	OK
Engine startingtime	OK	Clutch test	OK
Exhaust gass	OK	Wiper fluid level	OK
Handbrake	OK	Transmission	OK
		Lighting	OK
		Wiperblades	OK

Degree of wear

205/60/16/92 V LightMetal				
Summer tyres:	Fr.L.	Michelin: 4 mm	Fr.R.	Michelin: 4 mm
	Re.L.	Michelin: 4 mm	Re.R.	Michelin: 4 mm

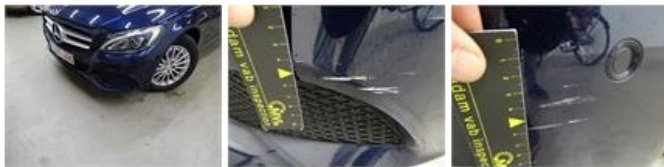
Assistance equipment

Repair kit	Yes	Compressor	Yes
Number of charging cables (normal)	0		
Number of charging cables (rapid charge)	0		

Total cost ex VAT	423,60
Bumper R, Scratch(es), LI - Repair and paint (complete)	211,80



Bumper F, Scratch(es), LI - Repair and paint (complete)	211,80
---	--------



Rear window, Scratch(es), Acceptable	0,00
--------------------------------------	------

No pictures to display

Wing R R, Dent(s), Acceptable	0,00
-------------------------------	------

No pictures to display

Door R R, Repaired, Acceptable	0,00
--------------------------------	------

No pictures to display

Door F L, Scratch(es), Acceptable	0,00
-----------------------------------	------

No pictures to display