



**MERCEDES Vito: 1EWX038**

Vinnumber:	<b>WDF63960113804864</b>	Versionname:	<b>VITO 110 B/F SWB 95PK</b>
First Registrationdate:	<b>10/04/2013</b>	Fiscalpower:	
Expertise Mileage:	<b>147577</b>	Power Kw:	<b>70</b>
Bodytype:	<b>Transporter</b>	Body color:	<b>Red</b>
Gearbox:	<b>MAN 6 VIT</b>	Paint type:	<b>Opaque</b>
Transmission:	<b>Back</b>	Rims summer:	<b>Steel</b>
Fueltype:	<b>Diesel</b>	Oil level:	<b>OK</b>
Battery functioning:	<b>Yes</b>	Parking lot:	<b>LCV10</b>
Number of doors:	<b>5</b>		
Number of seats:	<b>3</b>		
Number head rests:	<b>3</b>		
Rims summer:	<b>Steel</b>		
Category:	<b>Light Commercial Vehicle</b>		
Oil level:	<b>OK</b>		

**Options**

Radio CD	Central consol F
Windows electric F	Front parking sensors
Radio multimedia	Rear parking sensors
Type of headlighting	Type of Tow bar
Type of GPS	<b>Headlighting Halogen</b>
Type of Lining	<b>No GPS</b>
Type of climate control	<b>Lining leather</b>
	<b>Manual climate control</b>
	<b>No Tow bar</b>

**Limited Technical Inspection**

Airco functioning	<b>OK</b>	Battery functioning	<b>Yes</b>
Tires wear profile	<b>OK</b>	Power steering	<b>Yes</b>
Idle position	<b>OK</b>	Sound engine	<b>OK</b>
Engine startingtime	<b>OK</b>	Clutch test	<b>OK</b>
Exhaust gass	<b>OK</b>	Wiper fluid level	<b>OK</b>
Handbrake	<b>OK</b>	Transmission	<b>OK</b>
		Lighting	<b>OK</b>
		Wiperblades	<b>OK</b>

**Degree of wear**

<b>195/65/16/102 R Steel</b>				
Summer tyres:	Fr.L.	<b>Michelin: 8 mm</b>	Fr.R.	<b>Michelin: 8 mm</b>
	Re.L.	<b>Bridgestone: 7 mm</b>	Re.R.	<b>Bridgestone: 7 mm</b>

**Assistance equipment**

Number of charging cables (normal)	<b>0</b>
Number of charging cables (rapid charge)	<b>0</b>

<b>Total cost ex VAT</b>	<b>836,11</b>
--------------------------	---------------

<b>Door R R, Scratch(es), Acceptable</b>	<b>0,00</b>
--	-------------

*No pictures to display*

<b>Sill outer L, Dent(s), LI - Repair and paint (complete)</b>	<b>232,88</b>
--	---------------





Roof, Dent(s), Acceptable	0,00
---------------------------	------

No pictures to display

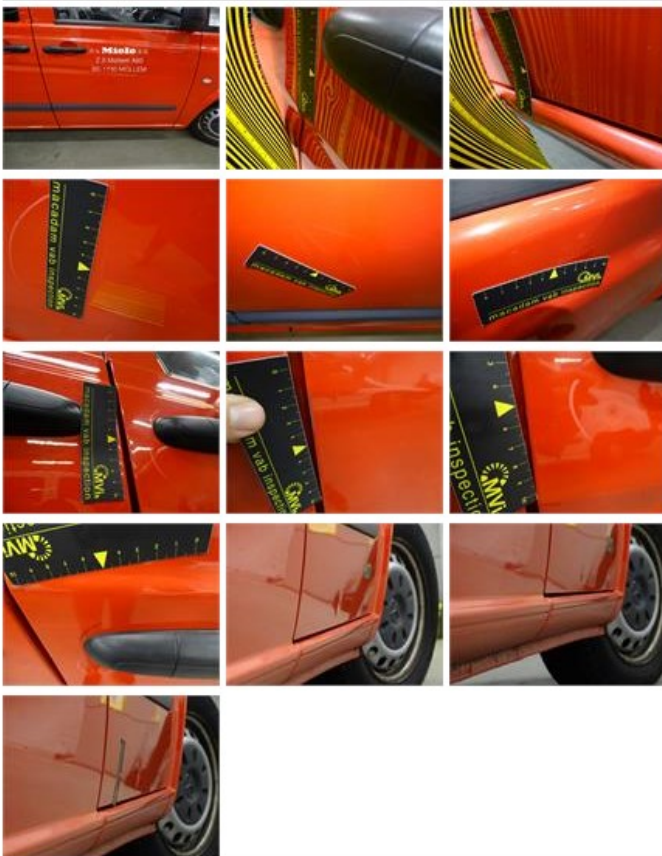
Bumper R, Scratch(es), Acceptable	0,00
-----------------------------------	------

No pictures to display

Wing R R, Dent(s) and scratch(es), LI - Repair and paint (complete)	231,15
---	--------



Door F R, Dent(s) and scratch(es), LI - Repair and paint (complete)	238,76
---	--------



Trunk door R R, Scratch(es), Acceptable	0,00
---	------

No pictures to display

Trunk door R L, Dent(s) and scratch(es), Acceptable	0,00
---	------

No pictures to display

Wing trim R R, Missing, E - Replace	69,00
-------------------------------------	-------



Door panel R R, Hole, Acceptable 0,00

No pictures to display

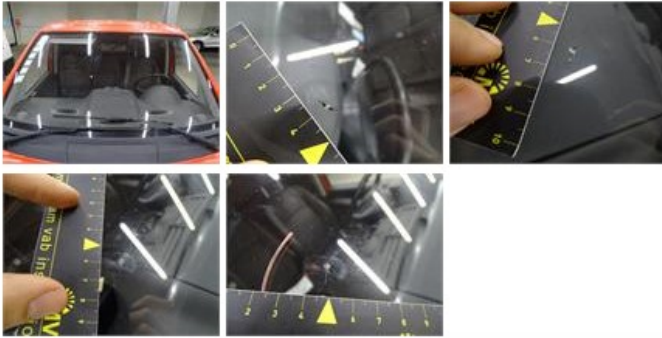
Wing R L, Scratch(es), Acceptable 0,00

No pictures to display

Bumper F, Scratch(es), Acceptable 0,00

No pictures to display

Windscreen, Stone chip(s), Acceptable 0,00



Bonnet, Dent(s), Acceptable 0,00

No pictures to display

Door F L, Dent(s) and scratch(es), Acceptable 0,00

No pictures to display

Floor covering F L, Hole, Smart repair 64,32

