



## Mercedes Vito: 1GTJ155

Vinnumber:	<b>WDF63970313883909</b>	Versionname:	
First Registrationdate:	<b>24/04/2014</b>	Fiscalpower:	<b>100</b>
Expertise Mileage:	<b>210536</b>	Power Kw:	<b>Black</b>
Bodytype:	<b>Transporter</b>	Body color:	<b>Metalic</b>
Gearbox:	<b>Automatic</b>	Paint type:	<b>Aluminium</b>
Transmission:		Rims summer:	<b>OK</b>
Fueltype:	<b>Diesel</b>	Oil level:	<b>4101</b>
Battery functioning:	<b>Yes</b>	Parking lot:	
Number of doors:	<b>6</b>		
Number of seats:	<b>5</b>		
Number head rests:	<b>5</b>		
Rims summer:	<b>Aluminium</b>		
Category:	<b>Light Commercial Vehicle</b>		
Oil level:	<b>OK</b>		
Registration Certificate Car (BE):	<b>Yes</b>		

## Options

Radio CD	Central consol F
Windows electric F	Front parking sensors
Cruise Control	Rear parking sensors
Steering wheel multifunctional	Type of Tow bar
Type of headlighting	<b>Headlighting Halogen</b>
Type of GPS	<b>GPS big screen color</b>
Type of Lining	<b>Lining fabrics</b>
Type of climate control	<b>Manual climate control</b>
	<b>No Tow bar</b>

## Limited Technical Inspection

Airco functioning	<b>OK</b>	Battery functioning	<b>Yes</b>
Tires wear profile	<b>OK</b>	Power steering	<b>Yes</b>
Idle position	<b>OK</b>	Sound engine	<b>OK</b>
Engine startingtime	<b>OK</b>	Clutch test	<b>OK</b>
Exhaust gass	<b>OK</b>	Wiper fluid level	<b>OK</b>
Handbrake	<b>OK</b>	Transmission	<b>OK</b>
		Lighting	<b>OK</b>
		Wiperblades	<b>OK</b>

## Degree of wear

	<b>225/55/17/101 V LightMetal</b>			
Summer tyres:	Fr.L.	<b>Fulda: 9 mm</b>	Fr.R.	<b>Fulda: 9 mm</b>
	Re.L.	<b>Kleber: 5 mm</b>	Re.R.	<b>Kleber: 5 mm</b>

## Assistance equipment

Spare wheel	<b>Yes</b>
-------------	------------

Total cost ex VAT	1582,45
Alloy rim F R, Scratch(es), Acceptable	0,00
<i>No pictures to display</i>	
Bonnet, Stone chip(s), Acceptable	0,00
<i>No pictures to display</i>	
Wing R R, Dent(s) and scratch(es), LI - Repair and paint (complete)	231,15



Door F L, Dent(s) and scratch(es), It - Spot repair

115,56



Roof, Dent(s), PDR - Paintless dent repair

63,00



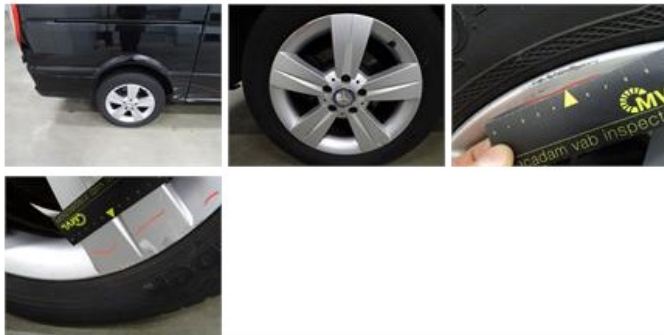
Alloy rim R L, Scratch(es), LI - Repair and paint (complete)

95,00



Alloy rim R R, Scratch(es), LI - Repair and paint (complete)

95,00



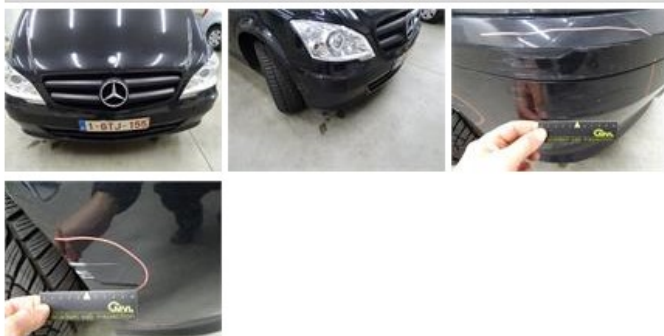
Internal Boot Lining R, Scratch(es), Smart repair

110,64



Bumper F, Scratch(es), LI - Repair and paint (complete)

158,85



Internal Boot Lining L, Scratch(es), Smart repair

110,64



Alloy rim F L, Scratch(es), LI - Repair and paint (complete)

95,00



Door R R, Dent(s) and scratch(es), LI - Repair and paint (complete)

238,76



Trunk door panel R, Scratch(es), Smart repair

110,00



Bumper R, Dent(s) and scratch(es), LI - Repair and paint (complete)

158,85

