



**MERCEDES C BERLINE: 1KFC035**

Vinnumber:	<b>WDD2050041R050247</b>	Versionname:	<b>2.1 C 220 BLUETEC 120KW AMG LINE</b>
First Registrationdate:	<b>20/04/2015</b>	Fiscalpower:	
Expertise Mileage:	<b>161800</b>	Power Kw:	<b>120</b>
Bodytype:		Body color:	<b>Grey</b>
Gearbox:	<b>Automatic</b>	Paint type:	<b>Metalic</b>
Transmission:	<b>Back</b>	Rims summer:	<b>Aluminium</b>
Fueltype:	<b>Diesel</b>	Oil level:	<b>OK</b>
Battery functioning:	<b>Yes</b>	Parking lot:	<b>2824</b>
Number of doors:	<b>4</b>		
Number of seats:	<b>5</b>		
Number head rests:	<b>5</b>		
Rims summer:	<b>Aluminium</b>		
Category:	<b>Passenger Car</b>		
Oil level:	<b>OK</b>		
Registration Certificate Car (BE):	<b>Yes</b>		

**Options**

Radio CD		Central consol F	
GPS storage		Front parking sensors	
GPS storage	<b>SD</b>	Rear parking sensors	
Windows electric F		Type of Tow bar	<b>Tow bar fixed</b>
Windows electric R			
Cruise Control			
Steering wheel multifunctional			
Radio multimedia			
Type of headlighting	<b>Headlighting Halogen</b>		
Type of GPS	<b>GPS portable</b>		
Type of Lining	<b>Lining artificial leather</b>		
Type of climate control	<b>Autom climate control</b>		

**Limited Technical Inspection**

Airco functioning	<b>OK</b>	Battery functioning	<b>Yes</b>
Tires wear profile	<b>OK</b>	Power steering	<b>Yes</b>
Idle position	<b>OK</b>	Sound engine	<b>OK</b>
Engine startingtime	<b>OK</b>	Clutch test	<b>OK</b>
Exhaust gass	<b>OK</b>	Wiper fluid level	<b>OK</b>
Handbrake	<b>OK</b>	Transmission	<b>OK</b>
		Lighting	<b>OK</b>
		Wiperblades	<b>OK</b>

**Degree of wear**

	<b>225/45/18/95 Y LightMetal</b>			
Summer tyres:	Fr.L.	<b>Michelin: 5 mm</b>	Fr.R.	<b>Michelin: 5 mm</b>
	Re.L.	<b>Michelin: 4 mm</b>	Re.R.	<b>Michelin: 4 mm</b>

**Assistance equipment**

Number of charging cables (normal)	<b>0</b>
Number of charging cables (rapid charge)	<b>0</b>

<b>Total cost ex VAT</b>	<b>1982,20</b>
<b>Tailgate, Scratch(es), LI - Repair and paint (complete)</b>	<b>301,68</b>



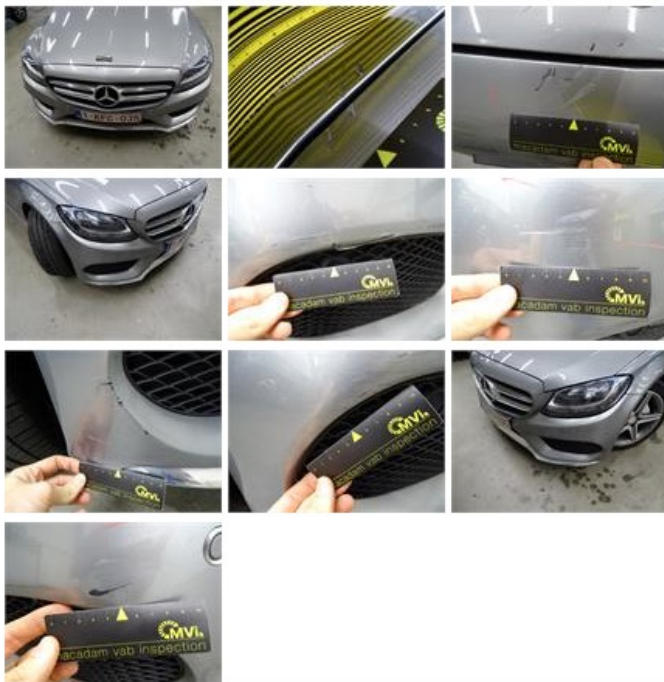
Floor covering F L, Hole, Smart repair

64,32



Bumper F, Dent(s) and scratch(es), LI - Repair and paint (complete)

211,80



Door F R, Scratch(es), Acceptable

0,00

*No pictures to display*

Wing R L, Dent(s), Acceptable

0,00

*No pictures to display*

Alloy rim F L polished, Scratch(es), LI - Repair and paint (complete)

95,00



Ignition key, Missing, E - Replace

150,00

*No pictures to display*

Alloy rim R R polished, Scratch(es), LI - Repair and paint (complete)

95,00





Floor covering F R, Hole, Smart repair

64,32



Internal Boot Lining L, Worn, Acceptable

0,00



Steering wheel, Worn, Acceptable

0,00



Door R R, Scratch(es), Acceptable

0,00

No pictures to display

Bumper R, Dent(s) and scratch(es), LI - Repair and paint (complete)

211,80



Wing R R, Dent(s), LI - Repair and paint (complete)

308,20



Door F L, Scratch(es), Acceptable

0,00

No pictures to display

Alloy rim F R polished, Scratch(es), LI - Repair and paint (complete)

95,00



Backrest cover F L, Worn, Acceptable

0,00



Door R L, Scratch(es), Acceptable

0,00

No pictures to display

Alloy rim R L polished, Scratch(es), LI - Repair and paint (complete)

95,00



Bonnet, Dent(s) and scratch(es), LI - Repair and paint (complete)

290,08

