



**BMW 1 HATCH: 1LHY247**

Vinnumber:	<b>WBA1V910X05B19850</b>	Versionname:	<b>1.5 116D EFFICIENTDYNAMICS EDIT. (85KW)</b>
First Registrationdate:	<b>2/10/2015</b>	Fiscalpower:	
Expertise Mileage:	<b>153020</b>	Power Kw:	<b>85</b>
Bodytype:		Body color:	<b>Black</b>
Gearbox:	<b>MAN 6 VIT</b>	Paint type:	<b>Metalic</b>
Transmission:	<b>Front</b>	Rims summer:	<b>Aluminium</b>
Fueltype:	<b>Diesel</b>	Oil level:	<b>OK</b>
Maintenance:	<b>OK</b>	Parking lot:	<b>2720</b>
Maintenance:	<b>OVER 24000 KM</b>		
Battery functioning:	<b>Yes</b>		
Number of doors:	<b>5</b>		
Number of seats:	<b>5</b>		
Number head rests:	<b>5</b>		
Rims summer:	<b>Aluminium</b>		
Category:	<b>Passenger Car</b>		
Oil level:	<b>OK</b>		
Registration Certificate Car (BE):	<b>Yes</b>		

**Options**

Radio CD		Central consol F	
Windows electric F		Luggage cover	
Windows electric R		Rear parking sensors	
Type of headlighting	<b>Headlighting Halogen</b>	Type of Tow bar	<b>No Tow bar</b>
Type of Lining	<b>Lining fabrics</b>		
Type of climate control	<b>Autom climate control</b>		

**Limited Technical Inspection**

Airco functioning	<b>OK</b>	Battery functioning	<b>Yes</b>
Tires wear profile	<b>OK</b>	Power steering	<b>Yes</b>
Idle position	<b>OK</b>	Sound engine	<b>OK</b>
Engine startingtime	<b>OK</b>	Clutch test	<b>OK</b>
Exhaust gass	<b>OK</b>	Wiper fluid level	<b>OK</b>
Handbrake	<b>OK</b>	Transmission	<b>OK</b>
		Lighting	<b>OK</b>
		Wiperblades	<b>OK</b>

**Degree of wear**

	<b>205/55/16/91 H LightMetal</b>			
Summer tyres:	Fr.L.	<b>Goodyear: 5 mm</b>	Fr.R.	<b>Goodyear: 5 mm</b>
	Re.L.	<b>Goodyear: 4 mm</b>	Re.R.	<b>Goodyear: 4 mm</b>

**Assistance equipment**

Repair kit	<b>Yes</b>	Compressor	<b>Yes</b>
Number of charging cables (normal)	<b>0</b>		
Number of charging cables (rapid charge)	<b>0</b>		

<b>Total cost ex VAT</b>	<b>240,75</b>
<b>Seat cover F R, Dirty, Cleaning</b>	<b>25,00</b>



Interior, Dirty, Cleaning

70,00



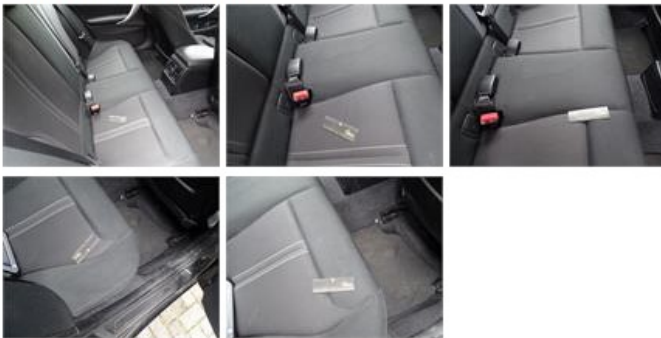
MOT Certificate, Missing, P - Check

0,00



Seat cover R, Dirty, Cleaning

50,00



Windscreen, Stone chip(s), Windscreen repair

0,00



Rear window, Scratch(es), E - Replace

0,00



Engine protective plate, Hole, E - Replace

95,75

