



SKODA Octavia: 1HAB022

| | | | |
|------------------------------------|--------------------------|--------------|--|
| Vinnumber: | TMBJG9NE5E0228639 | Versionname: | OCTAVIA COMBI Elegance DSG 105PK Aut. |
| First Registrationdate: | 2/06/2014 | Fiscalpower: | |
| Expertise Mileage: | 89496 | Power Kw: | 77 |
| Bodytype: | | Body color: | Black |
| Gearbox: | Automatic | Paint type: | Metalic |
| Transmission: | Front | Rims summer: | Aluminium |
| Fueltype: | Diesel | Oil level: | OK |
| Battery functioning: | Yes | Parking lot: | 1225 |
| Number of doors: | 5 | | |
| Number of seats: | 5 | | |
| Number head rests: | 5 | | |
| Rims summer: | Aluminium | | |
| Category: | Passenger Car | | |
| Oil level: | OK | | |
| Registration Certificate Car (BE): | Yes | | |

Options

| | | | |
|--------------------------------|------------------------------|-----------------------|-------------------|
| Radio CD | | Seats electric F L | |
| GPS storage | | Central consol F | |
| GPS storage | HD | Luggage cover | |
| Windows electric F | | Front parking sensors | |
| Windows electric R | | Rear parking sensors | |
| Cruise Control | | Type of Tow bar | No Tow bar |
| Steering wheel multifunctional | | | |
| Seats F heated | | | |
| Radio multimedia | | | |
| Type of headlighting | Headlighting Xenon | | |
| Type of GPS | GPS big screen color | | |
| Type of Lining | Lining leather | | |
| Type of climate control | Autom climate control | | |

Limited Technical Inspection

| | | | |
|---------------------|-----------|---------------------|------------|
| Airco functioning | OK | Battery functioning | Yes |
| Tires wear profile | OK | Power steering | Yes |
| Idle position | OK | Sound engine | OK |
| Engine startingtime | OK | Clutch test | OK |
| Exhaust gass | OK | Wiper fluid level | OK |
| Handbrake | OK | Transmission | OK |
| | | Lighting | OK |
| | | Wiperblades | OK |

Degree of wear

| | | | | |
|----------------------------------|-------|----------------------|-------|----------------------|
| 225/45/17/91 W LightMetal | | | | |
| Summer tyres: | Fr.L. | Pirelli: 3 mm | Fr.R. | Pirelli: 3 mm |
| | Re.L. | Pirelli: 4 mm | Re.R. | Pirelli: 4 mm |

Assistance equipment

| | | | |
|--|------------|------|------------|
| Spare wheel | Yes | Jack | Yes |
| Number of charging cables (normal) | 0 | | |
| Number of charging cables (rapid charge) | 0 | | |

| | |
|-------------------|---------|
| Total cost ex VAT | 1228,50 |
|-------------------|---------|

| | |
|-----------------------------------|------|
| Wing R L, Scratch(es), Acceptable | 0,00 |
|-----------------------------------|------|

No pictures to display

| | |
|-----------------------------------|------|
| Door F L, Scratch(es), Acceptable | 0,00 |
|-----------------------------------|------|

No pictures to display

Alloy rim R L, Scratch(es), LI - Repair and paint (complete)

95,00



Alloy rim R R, Scratch(es), LI - Repair and paint (complete)

95,00



Door R R, Scratch(es), Acceptable

0,00

No pictures to display

Wing R R, Scratch(es), Acceptable

0,00

No pictures to display

Wing F R, Scratch(es), Acceptable

0,00

No pictures to display

Alloy rim F R, Scratch(es), LI - Repair and paint (complete)

95,00



Rearview mirror housing R, Scratch(es), Acceptable

0,00

No pictures to display

Door F R, Dent(s) and scratch(es), LI - Repair and paint (complete)

318,35



Bumper R, Scratch(es), LI - Repair and paint (complete)

211,80



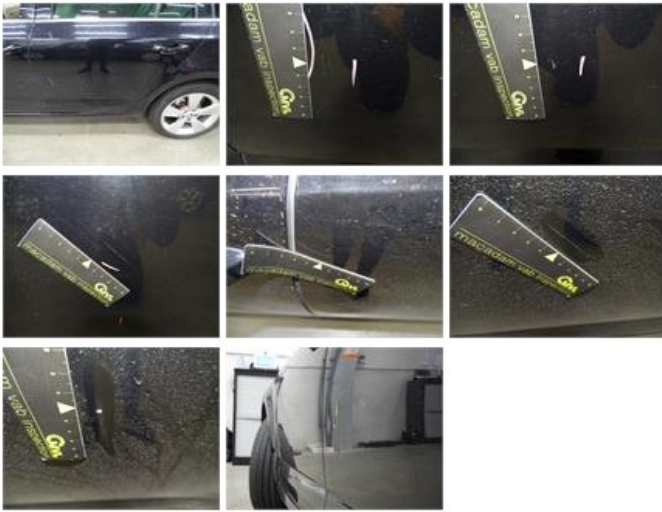
Alloy rim F L, Scratch(es), LI - Repair and paint (complete)

95,00



Door R L, Dent(s) and scratch(es), LI - Repair and paint (complete)

318,35



Bumper F, Dent(s) and scratch(es), Acceptable

0,00

No pictures to display