



VOLVO V60: 1LUJ586

Vinnumber:	YV1FW74C1G1311546	Versionname:	2.0 D2 KINETIC
First Registrationdate:	8/12/2015	Fiscalpower:	
Expertise Mileage:	119772	Power Kw:	88
Bodytype:		Body color:	Grey
Gearbox:	MAN 6 VIT	Paint type:	Metalic
Transmission:	Front	Rims summer:	Aluminium
Fueltype:	Diesel	Oil level:	OK
Battery functioning:	Yes	Parking lot:	2703
Number of doors:	5		
Number of seats:	5		
Number head rests:	5		
Rims summer:	Aluminium		
Category:	Passenger Car		
Oil level:	OK		
Registration Certificate Car (BE):	Yes		

Options

Radio CD		Central consol F	
GPS storage	HD	Luggage cover	
GPS storage		Rear parking sensors	
Windows electric F		Type of Tow bar	No Tow bar
Windows electric R			
Cruise Control			
Steering wheel multifunctional			
Seats F heated			
Radio multimedia			
Type of headlighting	Headlighting Halogen		
Type of GPS	GPS big screen color		
Type of Lining	Lining leather		
Type of climate control	Autom climate control		

Limited Technical Inspection

Airco functioning	OK	Battery functioning	Yes
Tires wear profile	OK	Power steering	Yes
Idle position	OK	Sound engine	OK
Engine startingtime	OK	Clutch test	OK
Exhaust gass	OK	Wiper fluid level	OK
Handbrake	OK	Transmission	OK
		Lighting	OK
		Wiperblades	OK

Degree of wear

215/55/16/93 V LightMetal				
Summer tyres:	Fr.L.	Continental: 4 mm	Fr.R.	Continental: 4 mm
	Re.L.	BF Goodrich: 6 mm	Re.R.	BF Goodrich: 6 mm

Assistance equipment

Repair kit	Yes	Compressor	Yes
Number of charging cables (normal)	0		
Number of charging cables (rapid charge)	0		

Total cost ex VAT 1548,35

Door R L, Scratch(es), Acceptable 0,00

No pictures to display

Wing R L, Dent(s) and scratch(es), LI - Repair and paint (complete) 308,20



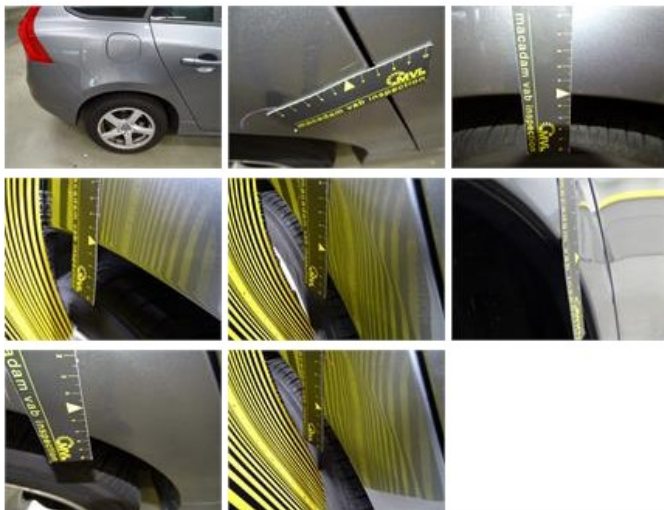
Bumper F, Scratch(es), LI - Repair and paint (complete)

211,80



Wing R R, Dent(s) and scratch(es), LI - Repair and paint (complete)

308,20



Door F R, Scratch(es), Acceptable

0,00

No pictures to display

Alloy rim F R, Scratch(es), LI - Repair and paint (complete)

95,00



Alloy rim R R, Scratch(es), Acceptable

0,00

No pictures to display

Door R R, Scratch(es), LI - Repair and paint (complete)

318,35



Alloy rim F L, Scratch(es), LI - Repair and paint (complete)

95,00



Bumper R, Dent(s) and scratch(es), LI - Repair and paint (complete)

211,80

