



CITROEN GRAND C4 PICASSO: 1KVN512

| | | | |
|------------------------------------|--------------------------|--------------|---------------------------------------|
| Vinnumber: | VF73E9HC8FJ683612 | Versionname: | 1.6 BLUEHDI 115 MAN6 EXCLUSIVE |
| First Registrationdate: | 14/07/2015 | Fiscalpower: | |
| Expertise Mileage: | 120971 | Power Kw: | 85 |
| Bodytype: | | Body color: | Grey |
| Gearbox: | MAN 6 VIT | Paint type: | Metalic |
| Transmission: | | Rims summer: | Aluminium |
| Fueltype: | Diesel | Oil level: | OK |
| Battery functioning: | Yes | Parking lot: | 3712 |
| Number of doors: | 5 | | |
| Number of seats: | 5 | | |
| Number head rests: | 5 | | |
| Rims summer: | Aluminium | | |
| Category: | Passenger Car | | |
| Oil level: | OK | | |
| Registration Certificate Car (BE): | Yes | | |

Options

| | | | |
|--------------------------------|------------------------------|-----------------------|-------------------|
| Windows electric F | | Panoramic roof | |
| Windows electric R | | Central consol F | |
| Cruise Control | | Luggage cover | |
| Steering wheel multifunctional | | Front parking sensors | |
| Radio multimedia | | Rear parking sensors | |
| Type of headlighting | Headlighting Halogen | Type of Tow bar | No Tow bar |
| Type of GPS | GPS big screen color | | |
| Type of Lining | Lining semi-leather | | |
| Type of climate control | Autom climate control | | |

Limited Technical Inspection

| | | | |
|---------------------|-----------|---------------------|------------|
| Airco functioning | OK | Battery functioning | Yes |
| Tires wear profile | OK | Power steering | Yes |
| Idle position | OK | Sound engine | OK |
| Engine startingtime | OK | Clutch test | OK |
| Exhaust gass | OK | Wiper fluid level | OK |
| Handbrake | OK | Transmission | OK |
| | | Lighting | OK |
| | | Wiperblades | OK |

Degree of wear

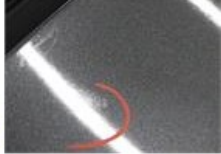
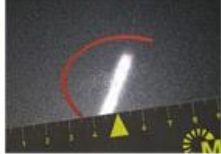
| | | | | |
|----------------------------------|-------|-------------------------|-------|-------------------------|
| 205/55/17/91 W LightMetal | | | | |
| Summer tyres: | Fr.L. | Vredestein: 6 mm | Fr.R. | Vredestein: 6 mm |
| | Re.L. | Michelin: 4 mm | Re.R. | Michelin: 4 mm |

Assistance equipment

| | |
|-------------|------------|
| Spare wheel | Yes |
|-------------|------------|

| | |
|-------------------|---------------|
| Total cost ex VAT | 290,08 |
|-------------------|---------------|

| | |
|---|---------------|
| Bonnet, Chemical polution, LI - Repair and paint (complete) | 290,08 |
|---|---------------|





| | |
|--|------|
| Rear window, Scratch(es), Acceptable | 0,00 |
| <i>No pictures to display</i> | |
| Alloy rim R R polished, Rust, Acceptable | 0,00 |

No pictures to display