


**HYUNDAI i40: 1HUZ497**

Vinnnummer:	<b>KMHLC81UAEU089428</b>	Versionname:	<b>i40 BRE Business Ed.+Leather+Sunr.115PK</b>
First Registrationdate:	<b>9/10/2014</b>	Fiscalpower:	
Expertise Mileage:	<b>98474</b>	Power Kw:	<b>85</b>
Bodytype:		Body color:	<b>Black</b>
Gearbox:	<b>MAN 6 VIT</b>	Paint type:	<b>Metallic</b>
Transmission:	<b>Front</b>	Rims summer:	<b>Aluminium</b>
Fueltype:	<b>Diesel</b>	Oil level:	<b>OK</b>
Battery functioning:	<b>Yes</b>	Parking lot:	<b>2715</b>
Number of doors:	<b>5</b>		
Number of seats:	<b>5</b>		
Number head rests:	<b>5</b>		
Rims summer:	<b>Aluminium</b>		
Category:	<b>Passenger Car</b>		
Oil level:	<b>OK</b>		
Registration Certificate Car (BE):	<b>Yes</b>		

**Options**

TV/DVD screen R	Seats electric F L
Windows electric F	Sun Roof electric
Windows electric R	Panoramic roof
Cruise Control	Central consol F
Steering wheel multifunctional	Luggage cover
Seats F heated	Front parking sensors
Radio multimedia	Rear parking sensors
Type of headlighting	Type of Tow bar
Type of GPS	<b>Headlighting Halogen</b>
Type of Lining	<b>GPS big screen color</b>
Type of climate control	<b>Lining leather</b>
	<b>Autom climate control</b>
	<b>Tow bar removable</b>

**Limited Technical Inspection**

Airco functioning	<b>OK</b>	Battery functioning	<b>Yes</b>
Tires wear profile	<b>OK</b>	Power steering	<b>Yes</b>
Idle position	<b>OK</b>	Sound engine	<b>OK</b>
Engine startingtime	<b>OK</b>	Clutch test	<b>OK</b>
Exhaust gass	<b>OK</b>	Wiper fluid level	<b>OK</b>
Handbrake	<b>OK</b>	Transmission	<b>OK</b>
		Lighting	<b>OK</b>
		Wiperblades	<b>OK</b>

**Degree of wear**

<b>205/50/16/92 H LightMetal</b>				
Summer tyres:	Fr.L.	<b>Michelin: 3 mm</b>	Fr.R.	<b>Michelin: 3 mm</b>
	Re.L.	<b>Michelin: 5 mm</b>	Re.R.	<b>Michelin: 5 mm</b>

**Assistance equipment**

Spare wheel	<b>Yes</b>	Jack	<b>Yes</b>
Number of charging cables (normal)	<b>0</b>		
Number of charging cables (rapid charge)	<b>0</b>		

Total cost ex VAT	<b>725,28</b>
Rear spoiler, Hail damage, LI - Repair and paint (complete)	<b>0,00</b>



Door R R, Scratch(es), Acceptable 0,00

No pictures to display

Bumper R, Dent(s) and scratch(es), LI - Repair and paint (complete) 211,80



Bumper F, Scratch(es), LI - Repair and paint (complete) 211,80



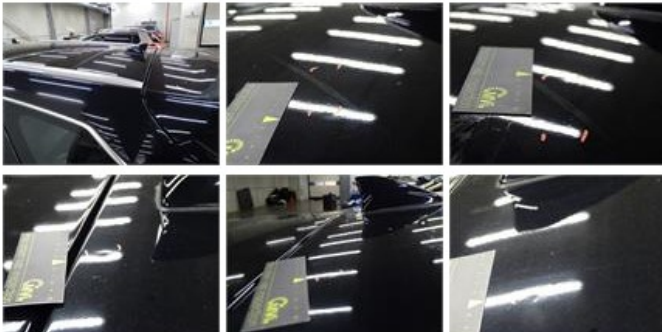
Tailgate, Scratch(es), LI - Repair and paint (complete) 301,68



Wing R L, Scratch(es), Acceptable 0,00

No pictures to display

Roof, Hail damage, PDR - Hail 0,00



Bonnet, Scratch(es), Acceptable 0,00

No pictures to display