



**LU Volkswagen Tiguan: YS8445**

Vinnnumber:	<b>WVGZZZ5NZGW097898</b>	Versionname:	<b>2.0 TDI 110KW R-EDITION S&amp;S BMT</b>
First Registrationdate:	<b>17/06/2016</b>	Fiscalpower:	
Expertise Mileage:	<b>167369</b>	Power Kw:	<b>110</b>
Bodytype:		Body color:	<b>Silver</b>
Gearbox:	<b>MAN 6 VIT</b>	Paint type:	<b>Metalic</b>
Transmission:	<b>Front</b>	Rims summer:	<b>Aluminium</b>
Fueltype:	<b>Diesel</b>	Oil level:	<b>OK</b>
Battery functioning:	<b>Yes</b>	Parking lot:	<b>1423</b>
Number of doors:	<b>5</b>		
Number of seats:	<b>5</b>		
Number head rests:	<b>5</b>		
Rims summer:	<b>Aluminium</b>		
Category:	<b>Passenger Car</b>		
Oil level:	<b>OK</b>		

**Options**

Radio CD		Sun Roof electric	
GPS storage		Panoramic roof	
GPS storage	<b>SD</b>	Central consol F	
Windows electric F		Luggage cover	
Windows electric R		Front parking sensors	
Cruise Control		Rear parking sensors	
Steering wheel multifunctional		Type of Tow bar	<b>No Tow bar</b>
Seats F heated			
Radio multimedia			
Type of headlighting	<b>Headlighting Xenon</b>		
Type of GPS	<b>GPS big screen color</b>		
Type of Lining	<b>Lining leather</b>		
Type of climate control	<b>Autom climate control</b>		

**Limited Technical Inspection**

Airco functioning	<b>OK</b>	Battery functioning	<b>Yes</b>
Tires wear profile	<b>OK</b>	Power steering	<b>Yes</b>
Idle position	<b>OK</b>	Sound engine	<b>OK</b>
Engine startingtime	<b>OK</b>	Clutch test	<b>OK</b>
Exhaust gass	<b>OK</b>	Wiper fluid level	<b>OK</b>
Handbrake	<b>OK</b>	Transmission	<b>OK</b>
		Lighting	<b>OK</b>
		Wiperblades	<b>OK</b>

**Degree of wear**

	<b>255/40/19/100 H LightMetal</b>			
Winter tyres:	Fr.L.	<b>Pirelli: 3 mm</b>	Fr.R.	<b>Pirelli: 3 mm</b>
	Re.L.	<b>Michelin: 6 mm</b>	Re.R.	<b>Michelin: 6 mm</b>

**Assistance equipment**

Repair kit	<b>Yes</b>	Compressor	<b>Yes</b>
Number of charging cables (normal)	<b>0</b>		
Number of charging cables (rapid charge)	<b>0</b>		

<b>Total cost ex VAT</b>	<b>1100,26</b>
--------------------------	----------------

<b>Roof, Dent(s), Acceptable</b>	<b>0,00</b>
----------------------------------	-------------

*No pictures to display*

<b>Bumper F, Scratch(es), Acceptable</b>	<b>0,00</b>
--	-------------

*No pictures to display*

Rear spoiler, Dent(s), LI - Repair and paint (complete)

115,56



Door R L, Scratch(es), LI - Repair and paint (complete)

318,35



Alloy rim F R, Scratch(es), LI - Repair and paint (complete)

95,00



Alloy rim R R, Scratch(es), LI - Repair and paint (complete)

95,00



Alloy rim R L, Scratch(es), Acceptable

0,00

No pictures to display

Rear window, Scratch(es), Acceptable

0,00

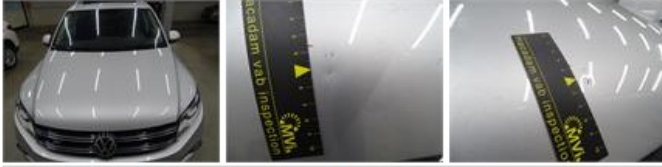


Alloy rim F L, Scratch(es), LI - Repair and paint (complete)

95,00



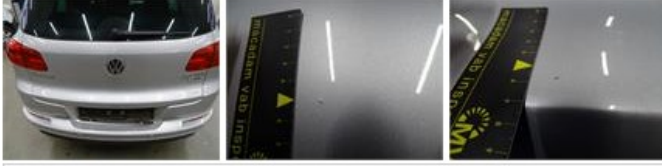
Bonnet, Stone chip(s), Acceptable 0,00



Door F L, Dent(s), PDR - Paintless dent repair 63,00



Tailgate, Bad repair, Acceptable 0,00



Bumper R, Scratch(es), Acceptable 0,00

*No pictures to display*

Door F R, Dent(s) and scratch(es), LI - Repair and paint (complete) 318,35



Roof pillar L, Dent(s), Acceptable 0,00

*No pictures to display*

Door R R, Scratch(es), Acceptable 0,00

*No pictures to display*