



**VOLVO V40: 1LBY939**

Vinnumber:	<b>VV1MV74L1G2291686</b>	Versionname:	<b>2.0 D2 KINETIC</b>
First Registrationdate:	<b>14/08/2015</b>	Fiscalpower:	
Expertise Mileage:	<b>61485</b>	Power Kw:	<b>88</b>
Bodytype:	<b>Hatchback</b>	Body color:	<b>Black</b>
Gearbox:	<b>MAN 6 VIT</b>	Paint type:	<b>Metalic</b>
Transmission:	<b>Front</b>	Rims summer:	<b>Aluminium</b>
Fueltype:	<b>Diesel</b>	Oil level:	<b>OK</b>
Maintenance:	<b>OK</b>	Parking lot:	<b>2702</b>
Battery functioning:	<b>Yes</b>		
Number of doors:	<b>5</b>		
Number of seats:	<b>5</b>		
Number head rests:	<b>5</b>		
Rims summer:	<b>Aluminium</b>		
Category:	<b>Passenger Car</b>		
Oil level:	<b>OK</b>		
Registration Certificate Car (BE):	<b>Yes</b>		

**Options**

Radio CD		Panoramic roof	
GPS storage		Central consol F	
GPS storage	<b>HD</b>	Luggage cover	
Windows electric F		Front parking sensors	
Windows electric R		Rear parking sensors	
Cruise Control			
Steering wheel multifunctional			
Type of headlighting	<b>Headlighting Halogen</b>		
Type of GPS	<b>GPS big screen color</b>		
Type of Lining	<b>Lining leather</b>		
Type of climate control	<b>Autom climate control</b>		

**Limited Technical Inspection**

Airco functioning	<b>OK</b>	Battery functioning	<b>Yes</b>
Tires wear profile	<b>OK</b>	Power steering	<b>Yes</b>
Idle position	<b>OK</b>	Sound engine	<b>OK</b>
Engine startingtime	<b>OK</b>	Clutch test	<b>OK</b>
Exhaust gass	<b>OK</b>	Wiper fluid level	<b>OK</b>
Handbrake	<b>OK</b>	Transmission	<b>OK</b>
		Lighting	<b>OK</b>
		Wiperblades	<b>OK</b>

**Degree of wear**

	<b>205/55/16/91 H LightMetal</b>			
Summer tyres:	Fr.L.	<b>Michelin: 4 mm</b>	Fr.R.	<b>Michelin: 4 mm</b>
	Re.L.	<b>Michelin: 6 mm</b>	Re.R.	<b>Michelin: 6 mm</b>

**Assistance equipment**

Repair kit	<b>Yes</b>	Compressor	<b>Yes</b>
------------	------------	------------	------------

Total cost ex VAT	<b>1551,79</b>
-------------------	----------------

Wing R L, Dent(s) and scratch(es), Acceptable	<b>0,00</b>
---	-------------

No pictures to display

Roof, Scratch(es), Paint	<b>250,00</b>
--------------------------	---------------



Rocker panel inner R L, Scratch(es), Acceptable 0,00

No pictures to display

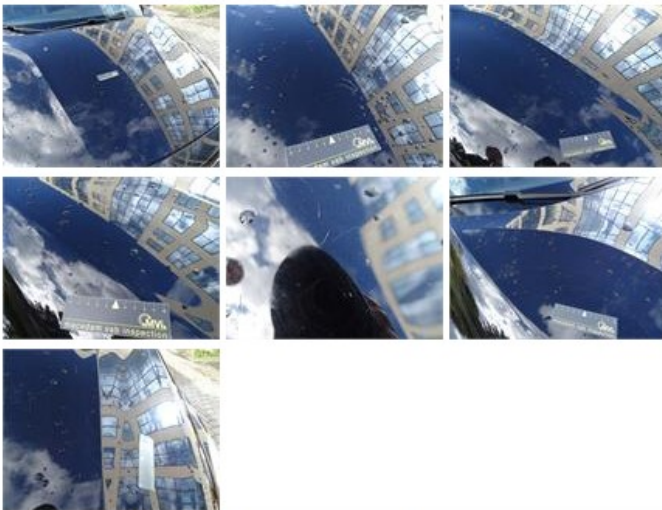
Rear window, Scratch(es), E - Replace 0,00



Wing R R, Dent(s), PDR - Paintless dent repair 63,00



Bonnet, Scratch(es), LI - Repair and paint (complete) 290,08



Wing F L, Scratch(es), LI - Repair and paint (complete) 220,18



Wing R L, Scratch(es), Acceptable 0,00

No pictures to display

Bumper R, Scratch(es), Acceptable 0,00

No pictures to display

Door F L, Scratch(es), LI - Repair and paint (complete) 318,35



Bumper F, Scratch(es), Acceptable 0,00

No pictures to display

Wing F R, Scratch(es), LI - Repair and paint (complete) 220,18



Alloy rim F R, Scratch(es), LI - Repair and paint (complete)

95,00



Alloy rim R R, Scratch(es), LI - Repair and paint (complete)

95,00

