



VOLVO V60: 1RAE179

Vinnnumber:	YV1GWBH0H1347555	Versionname:	2.4 4WD D5 TWIN ENGINE SUMMUM
First Registrationdate:	25/10/2016	Fiscalpower:	
Expertise Mileage:	204104	Power Kw:	120
Bodytype:		Body color:	Dark Blue
Gearbox:	Automatic	Paint type:	Metalic
Transmission:	4 Weel	Rims summer:	Aluminium
Fueltype:	Hybrid Diesel	Oil level:	OK
Battery functioning:	Yes	Parking lot:	3829
Number of doors:	5		
Number of seats:	5		
Number head rests:	5		
Rims summer:	Aluminium		
Category:	Passenger Car		
Oil level:	OK		
Registration Certificate Car (BE):	Yes		

Options

Radio CD		Seats electric F L	
GPS storage		Seats electric F R	
GPS storage	HD	Sun Roof electric	
Windows electric F		Central consol F	
Windows electric R		Luggage cover	
Cruise Control		Front parking sensors	
Steering wheel multifunctional		Rear parking sensors	
Seats F heated		Type of Tow bar	No Tow bar
Radio multimedia			
Type of headlighting	Headlighting Halogen		
Type of GPS	GPS big screen color		
Type of Lining	Lining leather		
Type of climate control	Autom climate control		

Limited Technical Inspection

Airco functioning	OK	Battery functioning	Yes
Tires wear profile	OK	Power steering	Yes
Idle position	OK	Sound engine	OK
Engine startingtime	OK	Clutch test	OK
Exhaust gass	OK	Wiper fluid level	OK
Handbrake	OK	Transmission	OK
		Lighting	OK
		Wiperblades	OK

Degree of wear

235/45/17/97 Y LightMetal				
Summer tyres:	Fr.L.	Uniroyal: 2 mm	Fr.R.	Uniroyal: 2 mm
	Re.L.	Uniroyal: 5 mm	Re.R.	Uniroyal: 5 mm

Assistance equipment

Repair kit	Yes	Compressor	Yes
Number of charging cables (normal)	0		
Number of charging cables (rapid charge)	0		

Total cost ex VAT 0,00

Rear spoiler, Scratch(es), Acceptable 0,00

No pictures to display

Door F R, Dent(s) and scratch(es), LI - Repair and paint (complete) 0,00



Tailgate, Scratch(es), Acceptable 0,00

No pictures to display

Alloy rim R L, Scratch(es), LI - Repair and paint (complete) 0,00



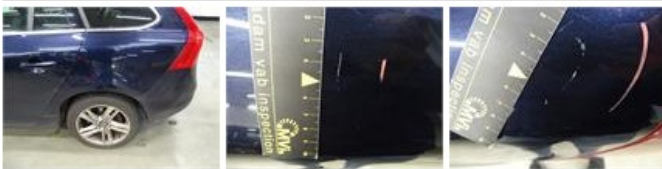
Alloy rim R R, Scratch(es), LI - Repair and paint (complete) 0,00



Roof pillar L, Scratch(es), LI - Repair and paint (complete) 0,00



Wing R L, Scratch(es), LI - Repair and paint (complete) 0,00



Alloy rim F R, Scratch(es), LI - Repair and paint (complete) 0,00





Alloy rim F L, Scratch(es), LI - Repair and paint (complete) 0,00



Wing R R, Scratch(es), Acceptable 0,00

No pictures to display

Windscreen, Scratch(es), Acceptable 0,00



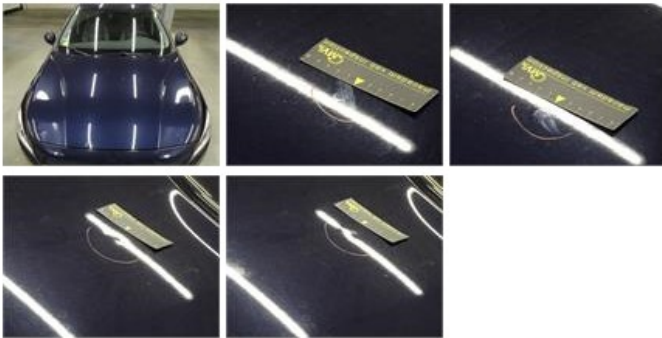
Rearview mirror housing L, Scratch(es), Acceptable 0,00

No pictures to display

Door F L, Scratch(es), Acceptable 0,00

No pictures to display

Bonnet, Chemical pollution, LI - Repair and paint (complete) 0,00



Rearview mirror housing R, Scratch(es), LI - Repair and paint (complete) 0,00



Door panel R R, Tear, E - Replace 0,00



Door R R, Dent(s) and scratch(es), LI - Repair and paint (complete) 0,00



Wing F R, Scratch(es), Acceptable 0,00

No pictures to display

Roof, Scratch(es), LI - Repair and paint (complete)

0,00



Door R L, Scratch(es), Acceptable

0,00

No pictures to display

Bumper R, Scratch(es), LI - Repair and paint (partial)

0,00



Bumper F, Scratch(es), LI - Repair and paint (complete)

0,00

