



**SKODA OCTAVIA: 1PBA368**

Vinnumber:	<b>TMBAG7NE2G0262660</b>	Versionname:	<b>1.6 CRTDI 81KW GREENLINE AMBITION</b>
First Registrationdate:	<b>25/05/2016</b>	Fiscalpower:	
Expertise Mileage:	<b>183602</b>	Power Kw:	<b>81</b>
Bodytype:	<b>Hatchback</b>	Body color:	<b>Black</b>
Gearbox:	<b>MAN 6 VIT</b>	Paint type:	<b>Metalic</b>
Transmission:	<b>Front</b>	Rims summer:	<b>Steel</b>
Fueltype:	<b>Diesel</b>	Oil level:	<b>OK</b>
Battery functioning:	<b>Yes</b>	Parking lot:	<b>2631</b>
Number of doors:	<b>5</b>		
Number of seats:	<b>5</b>		
Number head rests:	<b>5</b>		
Rims summer:	<b>Steel</b>		
Category:	<b>Passenger Car</b>		
Oil level:	<b>OK</b>		
Registration Certificate Car (BE):	<b>Yes</b>		

**Options**

Radio CD	Central consol F
GPS storage	SD
GPS storage	
Windows electric F	
Windows electric R	
Cruise Control	
Steering wheel multifunctional	
Radio multimedia	
Type of headlighting	<b>Headlighting Halogen</b>
Type of GPS	<b>GPS big screen color</b>
Type of Lining	<b>Lining fabrics</b>
Type of climate control	<b>Autom climate control</b>

**Limited Technical Inspection**

Airco functioning	<b>OK</b>	Battery functioning	<b>Yes</b>
Tires wear profile	<b>OK</b>	Power steering	<b>Yes</b>
Idle position	<b>OK</b>	Sound engine	<b>OK</b>
Engine startingtime	<b>OK</b>	Clutch test	<b>OK</b>
Exhaust gass	<b>OK</b>	Wiper fluid level	<b>OK</b>
Handbrake	<b>OK</b>	Transmission	<b>OK</b>
		Lighting	<b>OK</b>
		Wiperblades	<b>OK</b>

**Degree of wear**

	<b>195/65/15/91 H Steel</b>			
Summer tyres:	Fr.L.	<b>Michelin: 4 mm</b>	Fr.R.	<b>Michelin: 4 mm</b>
	Re.L.	<b>Michelin: 5 mm</b>	Re.R.	<b>Michelin: 5 mm</b>

**Assistance equipment**

Spare wheel	<b>Yes</b>	Jack	<b>Yes</b>
-------------	------------	------	------------

Total cost ex VAT	674,55
-------------------	--------

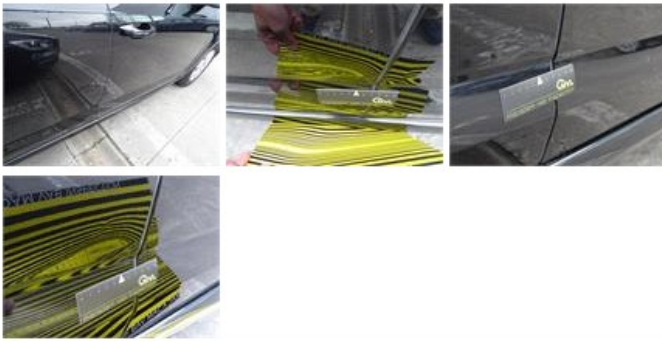
Bumper F, Stone chip(s), Acceptable	0,00
-------------------------------------	------

*No pictures to display*

Bonnet, Stone chip(s), Acceptable	0,00
-----------------------------------	------

*No pictures to display*

Door R R, Dent(s), LI - Repair and paint (complete)	0,00
---	------



Bonnet, Dent(s), Acceptable 0,00

No pictures to display

Door R L, Dent(s), Acceptable 0,00

No pictures to display

Wing R L, Scratch(es), LI - Repair and paint (complete) 308,20



Windscreen, Chemical pollution, Acceptable 0,00



Door F R, Dent(s), LI - Repair and paint (complete) 366,35

