



RENAULT CLIO: 1LNU831

Vinnumber:	VF15R0J0A54118332	Versionname:	1.5 ENERGY DCI 90E EXPRESSION
First Registrationdate:	30/10/2015	Fiscalpower:	
Expertise Mileage:	71152	Power Kw:	66
Bodytype:	Hatchback	Body color:	Grey
Gearbox:	MAN 5 VIT	Paint type:	Metalic
Transmission:	Front	Rims summer:	Steel
Fueltype:	Diesel	Oil level:	OK
Battery functioning:	Yes	Parking lot:	3224
Number of doors:	5		
Number of seats:	5		
Number head rests:	5		
Rims summer:	Steel		
Category:	Passenger Car		
Oil level:	OK		
Registration Certificate Car (BE):	Yes		

Options

GPS storage	HD	Luggage cover	
GPS storage		Rear parking sensors	
Windows electric F			
Cruise Control			
Radio multimedia			
Type of headlighting	Headlighting Halogen		
Type of GPS	GPS big screen color		
Type of Lining	Lining fabrics		
Type of climate control	Manual climate control		

Limited Technical Inspection

Airco functioning	OK	Battery functioning	Yes
Tires wear profile	OK	Power steering	Yes
Idle position	OK	Sound engine	OK
Engine startingtime	OK	Clutch test	OK
Exhaust gass	OK	Wiper fluid level	OK
Handbrake	OK	Transmission	OK
		Lighting	OK
		Wiperblades	OK

Degree of wear

	185/65/15/92 V Steel			
Summer tyres:	Fr.L.	Michelin: 3 mm	Fr.R.	Michelin: 3 mm
	Re.L.	Michelin: 6 mm	Re.R.	Michelin: 6 mm

Assistance equipment

Repair kit	Yes	Compressor	Yes
------------	------------	------------	------------

Total cost ex VAT	845,86
-------------------	--------

Certificate Of Conformity, Missing, E - Replace	150,00
---	--------

No pictures to display

Wheel cover F L, Scratch(es), E - Replace	24,00
---	-------



Wing R R, Scratch(es), It - Spot repair 115,56



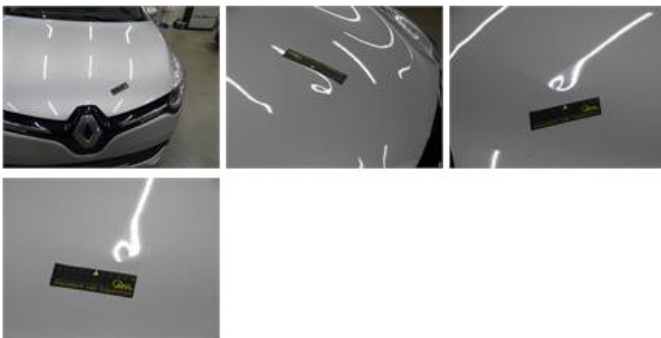
Wheel cover R R, Scratch(es), E - Replace 24,00



Windscreen, Stone chip(s), Windscreen repair 58,80



Bonnet, Dent(s), LI - Repair and paint (complete) 280,06



Bumper R, Scratch(es), LI - Repair and paint (complete) 169,44



Wheel cover R L, Scratch(es), E - Replace 24,00

