



## VOLVO V40: 1KVN445

Vinnumber:	<b>VV1MV7431G2286901</b>	Versionname:	<b>2.0 D2-82 KINETIC</b>
First Registrationdate:	<b>14/07/2015</b>	Fiscalpower:	
Expertise Mileage:	<b>75227</b>	Power Kw:	<b>88</b>
Bodytype:		Body color:	<b>Grey</b>
Gearbox:	<b>MAN 6 VIT</b>	Paint type:	<b>Metalic</b>
Transmission:	<b>Front</b>	Rims summer:	<b>Aluminium</b>
Fueltype:	<b>Diesel</b>	Oil level:	<b>OK</b>
Maintenance:	<b>IN 24003 KM</b>	Parking lot:	<b>2125</b>
Maintenance:	<b>OK</b>		
Battery functioning:	<b>Yes</b>		
Number of doors:	<b>5</b>		
Number of seats:	<b>5</b>		
Number head rests:	<b>5</b>		
Rims summer:	<b>Aluminium</b>		
Category:	<b>Passenger Car</b>		
Oil level:	<b>OK</b>		
Registration Certificate Car (BE):	<b>Yes</b>		

## Options

Radio CD		Central consol F	
GPS storage	<b>HD</b>	Luggage cover	
GPS storage		Rear parking sensors	
Windows electric F		Type of Tow bar	<b>Tow bar removable</b>
Windows electric R			
Cruise Control			
Steering wheel multifunctional			
Radio multimedia			
Type of headlighting	<b>Headlighting Halogen</b>		
Type of GPS	<b>GPS big screen color</b>		
Type of Lining	<b>Lining fabrics</b>		
Type of climate control	<b>Manual climate control</b>		

## Limited Technical Inspection

Airco functioning	<b>OK</b>	Battery functioning	<b>Yes</b>
Tires wear profile	<b>OK</b>	Power steering	<b>Yes</b>
Idle position	<b>OK</b>	Sound engine	<b>OK</b>
Engine startingtime	<b>OK</b>	Clutch test	<b>OK</b>
Exhaust gass	<b>OK</b>	Wiper fluid level	<b>OK</b>
Handbrake	<b>OK</b>	Transmission	<b>OK</b>
		Lighting	<b>OK</b>
		Wiperblades	<b>OK</b>

## Degree of wear

<b>205/55/16/91 H LightMetal</b>				
Summer tyres:	Fr.L.	<b>Michelin: 4 mm</b>	Fr.R.	<b>Michelin: 4 mm</b>
	Re.L.	<b>Michelin: 5 mm</b>	Re.R.	<b>Michelin: 5 mm</b>

## Assistance equipment

Repair kit	<b>Yes</b>	Compressor	<b>Yes</b>
Number of charging cables (normal)	<b>0</b>		
Number of charging cables (rapid charge)	<b>0</b>		

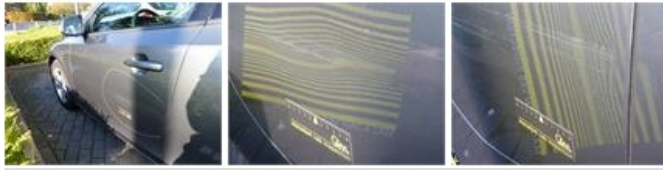
Total cost ex VAT	1804,10
Centre console, Scratch(es), Smart repair	110,64



Wing R R, Scratch(es), Acceptable 0,00

No pictures to display

Door F L, Dent(s) and scratch(es), LI - Repair and paint (complete) 366,35



Door R L, Dent(s) and scratch(es), LI - Repair and paint (complete) 366,35



Floor covering F R, Tear, E - Replace 252,00



Alloy rim F R, Scratch(es), LI - Repair and paint (complete) 95,00



Alloy rim F L, Scratch(es), LI - Repair and paint (complete) 95,00



Wing R L, Dent(s), LI - Repair and paint (complete) 308,20



Bumper R, Scratch(es), Acceptable 0,00

No pictures to display

Windscreen, Stone chip(s), Acceptable 0,00

No pictures to display

Bumper F L, Scratch(es), Acceptable 0,00

No pictures to display

Alloy rim R L, Scratch(es), LI - Repair and paint (complete) 95,00



Door R R, Dent(s) and scratch(es), Acceptable 0,00

No pictures to display

Bumper F R, Scratch(es), It - Spot repair 115,56

