



VOLKSWAGEN GOLF VARIANT: 1LDA151

| | | | |
|------------------------------------|--------------------------|--------------|-----------------------------|
| Vinnumber: | WVWZZZAUZFP591374 | Versionname: | 1.6 CR TDI TRENDLINE |
| First Registrationdate: | 25/08/2015 | Fiscalpower: | |
| Expertise Mileage: | 64471 | Power Kw: | 77 |
| Bodytype: | | Body color: | Blue |
| Gearbox: | MAN 5 VIT | Paint type: | Metalic |
| Transmission: | Front | Rims summer: | Aluminium |
| Fueltype: | Diesel | Oil level: | OK |
| Maintenance: | IN 20900 KM | Parking lot: | 3205 |
| Maintenance: | OK | | |
| Battery functioning: | Yes | | |
| Number of doors: | 5 | | |
| Number of seats: | 5 | | |
| Number head rests: | 5 | | |
| Rims summer: | Aluminium | | |
| Category: | Passenger Car | | |
| Oil level: | OK | | |
| Registration Certificate Car (BE): | Yes | | |

Options

| | | |
|--------------------------------|------------------------------|-----------------------|
| Radio CD | | Central consol F |
| GPS storage | | Luggage cover |
| GPS storage | SD | Front parking sensors |
| Windows electric F | | Rear parking sensors |
| Windows electric R | | |
| Steering wheel multifunctional | | |
| Radio multimedia | | |
| Type of headlighting | Headlighting Halogen | |
| Type of GPS | GPS big screen color | |
| Type of Lining | Lining fabrics | |
| Type of climate control | Autom climate control | |

Limited Technical Inspection

| | | | |
|---------------------|-----------|---------------------|------------|
| Airco functioning | OK | Battery functioning | Yes |
| Tires wear profile | OK | Power steering | Yes |
| Idle position | OK | Sound engine | OK |
| Engine startingtime | OK | Clutch test | OK |
| Exhaust gass | OK | Wiper fluid level | OK |
| Handbrake | OK | Transmission | OK |
| | | Lighting | OK |
| | | Wiperblades | OK |

Degree of wear

| | | | | |
|----------------------------------|-------|----------------|-------|----------------|
| 195/65/15/91 H LightMetal | | | | |
| Summer tyres: | Fr.L. | Michelin: 5 mm | Fr.R. | Michelin: 5 mm |
| | Re.L. | Michelin: 5 mm | Re.R. | Michelin: 5 mm |

Assistance equipment

| | | | |
|-------------|------------|------|------------|
| Spare wheel | Yes | Jack | Yes |
|-------------|------------|------|------------|

| | |
|-------------------|--------|
| Total cost ex VAT | 762,80 |
|-------------------|--------|

| | |
|-----------------------------------|------|
| Seat cover F R, Stain, Acceptable | 0,00 |
|-----------------------------------|------|

No pictures to display

| | |
|-----------------------------------|------|
| Seat cover F L, Stain, Acceptable | 0,00 |
|-----------------------------------|------|

No pictures to display

| | |
|--|-------|
| Door F L, Dent(s), PDR - Paintless dent repair | 63,00 |
|--|-------|



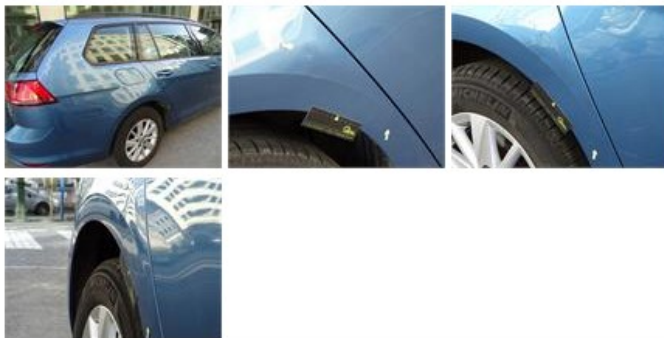
Windscreen, Stone chip(s), Windscreen repair

58,80



Wing R R, Dent(s) and scratch(es), LI - Repair and paint (complete)

404,20



Bumper R, Scratch(es), LI - Repair and paint (complete)

211,80



Alloy rim R L, Scratch(es), Acceptable

0,00

No pictures to display

Trunk lid covering R, Scratch(es), Acceptable

0,00

No pictures to display

Alloy rim F R, Scratch(es), Acceptable

0,00

No pictures to display

Seat cover R, Stain, Cleaning

25,00



Tailgate, Dent(s), Acceptable

0,00

No pictures to display

Wing R L, Dent(s), Acceptable

0,00

No pictures to display

Internal Boot Lining R, Scratch(es), Acceptable

0,00

No pictures to display