



**VOLKSWAGEN GOLF VARIANT: 1JFP853**

Vinnumber:	<b>WVWZZZAUZFP573054</b>	Versionname:	<b>1.6 CR TDI 77KW BMT TRENDLINE</b>
First Registrationdate:	<b>4/12/2014</b>	Fiscalpower:	
Expertise Mileage:	<b>133305</b>	Power Kw:	<b>77</b>
Bodytype:	<b>Break</b>	Body color:	<b>Brown</b>
Gearbox:	<b>MAN 5 VIT</b>	Paint type:	<b>Metalic</b>
Transmission:	<b>Front</b>	Rims summer:	<b>Steel</b>
Fueltype:	<b>Diesel</b>	Oil level:	<b>OK</b>
Maintenance:	<b>OK</b>	Parking lot:	<b>4723</b>
Maintenance:	<b>BINNEN 13000 KM</b>		
Battery functioning:	<b>Yes</b>		
Number of doors:	<b>5</b>		
Number of seats:	<b>5</b>		
Number head rests:	<b>5</b>		
Rims summer:	<b>Steel</b>		
Category:	<b>Passenger Car</b>		
Oil level:	<b>OK</b>		
Registration Certificate Car (BE):	<b>Yes</b>		

**Options**

GPS storage	<b>SD</b>	Central consol F	
GPS storage		Front parking sensors	
Windows electric F		Rear parking sensors	
Windows electric R		Type of Tow bar	<b>Tow bar fixed</b>
Cruise Control			
Steering wheel multifunctional			
Radio multimedia			
Type of headlighting	<b>Headlighting Halogen</b>		
Type of GPS	<b>GPS big screen color</b>		
Type of Lining	<b>Lining fabrics</b>		
Type of climate control	<b>Autom climate control</b>		
Adaptive cruise control			

**Limited Technical Inspection**

Airco functioning	<b>OK</b>	Battery functioning	<b>Yes</b>
Tires wear profile	<b>OK</b>	Power steering	<b>Yes</b>
Idle position	<b>OK</b>	Sound engine	<b>OK</b>
Engine startingtime	<b>OK</b>	Clutch test	<b>OK</b>
Exhaust gass	<b>OK</b>	Wiper fluid level	<b>OK</b>
Handbrake	<b>OK</b>	Transmission	<b>OK</b>
		Lighting	<b>OK</b>
		Wiperblades	<b>OK</b>

**Degree of wear**

<b>195/65/15/91 V Steel</b>				
Summer tyres:	Fr.L.	<b>Vredestein: 6 mm</b>	Fr.R.	<b>Vredestein: 6 mm</b>
	Re.L.	<b>Continental: 5 mm</b>	Re.R.	<b>Continental: 5 mm</b>

**Assistance equipment**

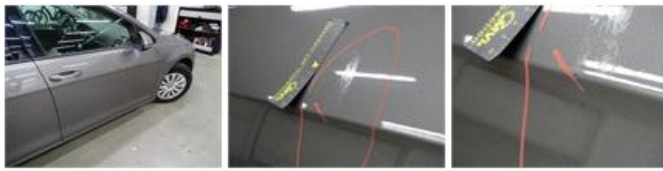
Emergency spare wheel	<b>Yes</b>	Jack	<b>Yes</b>
-----------------------	------------	------	------------

Total cost ex VAT	2240,05
-------------------	---------

Bumper F R, Scratch(es), Acceptable	0,00
-------------------------------------	------

*No pictures to display*

Door F R, Chemical polution, LI - Repair and paint (complete)	318,35
---------------------------------------------------------------	--------



Luggage space cover, Missing, E - Replace

240,00



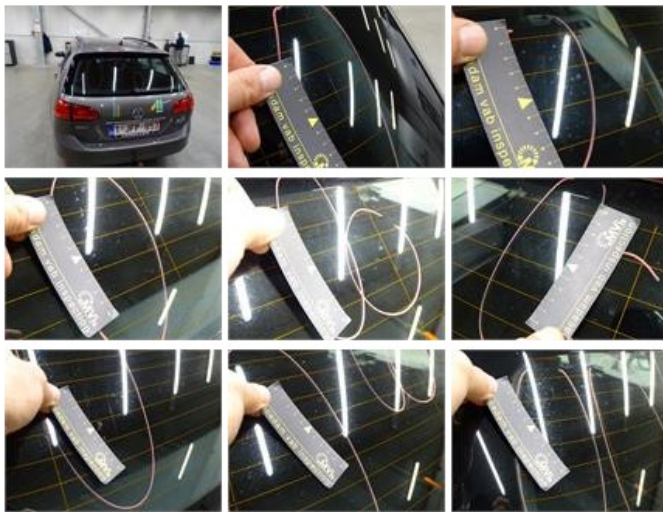
Backrest cover F L, Tear, E - Replace

360,00



Rear window, Scratch(es), E - Replace

370,00



Tailgate, Not original part, Sticker removal

25,00



Door F L, Dent(s), Acceptable

0,00

No pictures to display

Tailgate, Dent(s), Acceptable

0,00

No pictures to display

Bonnet, Chemical pollution, 67 - Polish

0,00



Trunk lid covering R, Scratch(es), Smart repair

110,64



Floor covering F L, Stain, Cleaning

25,00



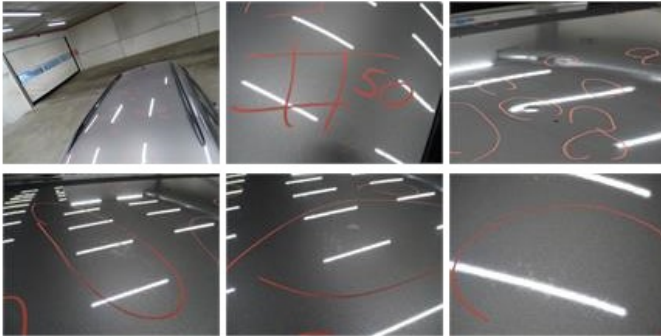
Seat cover F R, Stain, Cleaning

25,00



Roof, Hail damage, LI - Repair and paint (complete)

625,50



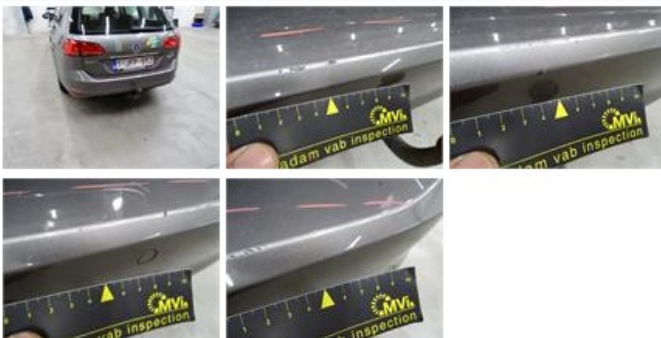
Seat cover R L, Stain, Cleaning

25,00



Bumper cover R M, Scratch(es), It - Spot repair

115,56



Wheel cover F R, Scratch(es), Acceptable

0,00

No pictures to display