


**AUDI A6 AVANT: 1LKZ176**

Vinnumber:	<b>WAUZZZ4G7GN081646</b>	Versionname:	<b>2.0 TDI ULTRA 140KW S TRONIC</b>
First Registrationdate:	<b>15/10/2015</b>	Fiscalpower:	
Expertise Mileage:	<b>206679</b>	Power Kw:	<b>140</b>
Bodytype:	<b>Break</b>	Body color:	<b>Grey</b>
Gearbox:	<b>Automatic</b>	Paint type:	<b>Metalic</b>
Transmission:	<b>Front</b>	Rims summer:	<b>Aluminium</b>
Fueltype:	<b>Diesel</b>	Oil level:	<b>OK</b>
Battery functioning:	<b>Yes</b>	Parking lot:	<b>4619</b>
Number of doors:	<b>5</b>		
Number of seats:	<b>5</b>		
Number head rests:	<b>5</b>		
Rims summer:	<b>Aluminium</b>		
Category:	<b>Passenger Car</b>		
Oil level:	<b>OK</b>		
Registration Certificate Car (BE):	<b>Yes</b>		

**Options**

Radio CD	Sun Roof electric
Windows electric F	Panoramic roof
Windows electric R	Central consol F
Cruise Control	Luggage cover
Steering wheel multifunctional	Front parking sensors
Seats F heated	Rear parking sensors
Type of headlighting	<b>Headlighting Xenon</b>
Type of GPS	<b>GPS big screen color</b>
Type of Lining	<b>Lining leather</b>
Type of climate control	<b>Autom climate control</b>
Sport seats	

**Limited Technical Inspection**

Airco functioning	<b>OK</b>	Battery functioning	<b>Yes</b>
Tires wear profile	<b>OK</b>	Power steering	<b>Yes</b>
Idle position	<b>OK</b>	Sound engine	<b>OK</b>
Engine startingtime	<b>OK</b>	Clutch test	<b>OK</b>
Exhaust gass	<b>OK</b>	Wiper fluid level	<b>OK</b>
Handbrake	<b>OK</b>	Transmission	<b>OK</b>
		Lighting	<b>OK</b>
		Wiperblades	<b>OK</b>

**Degree of wear**

	<b>255/40/19/100 Y LightMetal</b>			
Summer tyres:	Fr.L.	<b>Vredestein: 6 mm</b>	Fr.R.	<b>Vredestein: 6 mm</b>
	Re.L.	<b>Vredestein: 5 mm</b>	Re.R.	<b>Vredestein: 5 mm</b>

**Assistance equipment**

Emergency spare wheel	<b>Yes</b>	Jack	<b>Yes</b>
Total cost ex VAT			<b>654,72</b>
Electricity circuit, Not functioning (well), P - Check			<b>0,00</b>



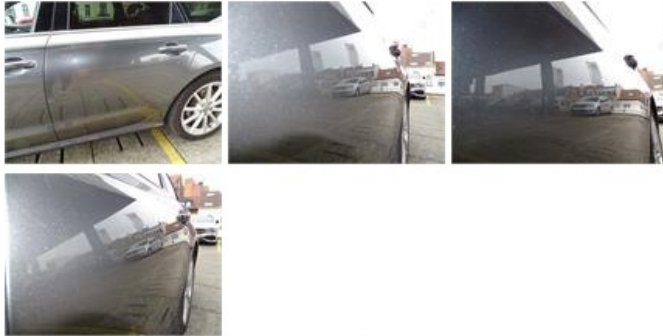
Rearview mirror housing R, Scratch(es), LI - Repair and paint (complete)

115,56



Door R L, Repaired, P - Check

0,00



Wing R R, Dent(s) and scratch(es), Acceptable

0,00



Alloy rim R R polished, Scratch(es), LI - Repair and paint (complete)

95,00



Bumper F, Scratch(es), Acceptable

0,00



Door F L, Repaired, P - Check

0,00



Alloy rim F R polished, Scratch(es), LI - Repair and paint (complete)

95,00





Alloy rim F L polished, Scratch(es), LI - Repair and paint (complete)

95,00



Bumper R, Dent(s) and scratch(es), LI - Repair and paint (complete)

254,16

