


**BMW 1: 1HXG960**

Vinnumber:	<b>WBA1C91040P873110</b>	Versionname:	<b>1 HATCH 116d Eff.Dyn.Ed. 116PK</b>
First Registrationdate:	<b>21/10/2014</b>	Fiscalpower:	
Expertise Mileage:	<b>87337</b>	Power Kw:	<b>85</b>
Bodytype:		Body color:	<b>Dark Blue</b>
Gearbox:	<b>MAN 6 VIT</b>	Paint type:	<b>Metalic</b>
Transmission:	<b>Back</b>	Rims summer:	<b>Aluminium</b>
Fueltype:	<b>Diesel</b>	Oil level:	<b>OK</b>
Battery functioning:	<b>Yes</b>	Parking lot:	<b>3619</b>
Number of doors:	<b>5</b>		
Number of seats:	<b>5</b>		
Number head rests:	<b>5</b>		
Rims summer:	<b>Aluminium</b>		
Category:	<b>Passenger Car</b>		
Oil level:	<b>OK</b>		
Registration Certificate Car (BE):	<b>Yes</b>		

**Options**

Radio CD	Central consol F
Windows electric F	Luggage cover
Windows electric R	Rear parking sensors
Cruise Control	Type of Tow bar
Steering wheel multifunctional	<b>No Tow bar</b>
Radio multimedia	
Type of headlighting	<b>Headlighting Halogen</b>
Type of GPS	<b>GPS big screen color</b>
Type of Lining	<b>Lining artificial leather</b>
Type of climate control	<b>Manual climate control</b>

**Limited Technical Inspection**

Airco functioning	<b>OK</b>	Battery functioning	<b>Yes</b>
Tires wear profile	<b>OK</b>	Power steering	<b>Yes</b>
Idle position	<b>OK</b>	Sound engine	<b>OK</b>
Engine startingtime	<b>OK</b>	Clutch test	<b>OK</b>
Exhaust gass	<b>OK</b>	Wiper fluid level	<b>OK</b>
Handbrake	<b>OK</b>	Transmission	<b>OK</b>
		Lighting	<b>OK</b>
		Wiperblades	<b>OK</b>

**Degree of wear**

	<b>205/55/16/91 W LightMetal</b>			
Summer tyres:	Fr.L.	<b>Michelin: 4 mm</b>	Fr.R.	<b>Michelin: 4 mm</b>
	Re.L.	<b>Michelin: 4 mm</b>	Re.R.	<b>Michelin: 4 mm</b>

**Assistance equipment**

Repair kit	<b>Yes</b>	Compressor	<b>Yes</b>
Number of charging cables (normal)	<b>0</b>		
Number of charging cables (rapid charge)	<b>0</b>		

Total cost ex VAT	2486,38
Alloy rim R R, Scratch(es), Acceptable	0,00
<i>No pictures to display</i>	
Alloy rim F R, Scratch(es), LI - Repair and paint (complete)	95,00



Door R R, Dent(s), PDR - Paintless dent repair 63,00



Wing F L, Scratch(es), Acceptable 0,00

No pictures to display

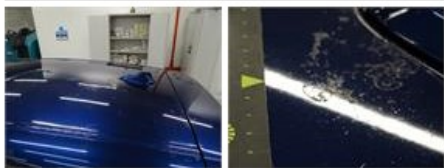
Bumper F, Crack, Le - Replace and paint 735,00



Door F R, Dent(s), PDR - Paintless dent repair 63,00



Roof, Chemical pollution, LI - Repair and paint (complete) 481,50



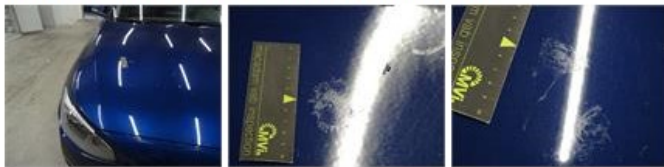
Bumper R, Scratch(es), LI - Repair and paint (complete) 211,80



Rear window, Scratch(es), E - Replace 370,00



Bonnet, Chemical pollution, LI - Repair and paint (complete) 290,08



Wing R L, Dent(s), PDR - Paintless dent repair 63,00



Rearlight L, Broken, E - Replace 114,00

