



**FORD MONDEO CLIPPER: 1LRF030**

Vinnumber:	<b>WF0FXXWPCFFJ56577</b>	Versionname:	<b>2.0 TDCI 110KW S/S MSQ BUSINESS ED+</b>
First Registrationdate:	<b>13/11/2015</b>	Fiscalpower:	
Expertise Mileage:	<b>47781</b>	Power Kw:	<b>110</b>
Bodytype:	<b>Break</b>	Body color:	<b>Blue</b>
Gearbox:	<b>Automatic</b>	Paint type:	<b>Metalic</b>
Transmission:	<b>Front</b>	Rims summer:	<b>Aluminium</b>
Fueltype:	<b>Diesel</b>	Oil level:	<b>OK</b>
Battery functioning:	<b>Yes</b>	Parking lot:	<b>3324</b>
Number of doors:	<b>5</b>		
Number of seats:	<b>5</b>		
Number head rests:	<b>5</b>		
Rims summer:	<b>Aluminium</b>		
Category:	<b>Passenger Car</b>		
Oil level:	<b>OK</b>		
Registration Certificate Car (BE):	<b>Yes</b>		

**Options**

Radio CD		Central consol F	
GPS storage		Luggage cover	
GPS storage	<b>SD</b>	Front parking sensors	
Windows electric F		Rear parking sensors	
Windows electric R		Type of Tow bar	<b>Tow bar removable</b>
Cruise Control			
Steering wheel multifunctional			
Radio multimedia			
Type of headlighting	<b>Headlighting Halogen</b>		
Type of GPS	<b>GPS big screen color</b>		
Type of Lining	<b>Lining fabrics</b>		
Type of climate control	<b>Autom climate control</b>		

**Limited Technical Inspection**

Airco functioning	<b>OK</b>	Battery functioning	<b>Yes</b>
Tires wear profile	<b>OK</b>	Power steering	<b>Yes</b>
Idle position	<b>OK</b>	Sound engine	<b>OK</b>
Engine startingtime	<b>OK</b>	Clutch test	<b>OK</b>
Exhaust gass	<b>OK</b>	Wiper fluid level	<b>OK</b>
Handbrake	<b>OK</b>	Transmission	<b>OK</b>
		Lighting	<b>OK</b>
		Wiperblades	<b>OK</b>

**Degree of wear**

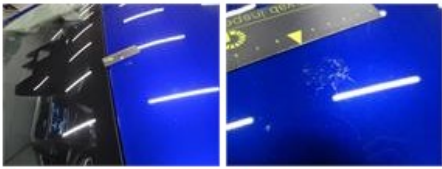
<b>235/50/17/96 W LightMetal</b>				
Summer tyres:	Fr.L.	<b>Continental: 5 mm</b>	Fr.R.	<b>Continental: 5 mm</b>
	Re.L.	<b>Continental: 5 mm</b>	Re.R.	<b>Continental: 5 mm</b>

**Assistance equipment**

Emergency spare wheel	<b>Yes</b>	Jack	<b>Yes</b>
-----------------------	------------	------	------------

Total cost ex VAT	<b>1027,98</b>
-------------------	----------------

Roof, Chemical polution, LI - Repair and paint (complete)	<b>481,50</b>
---	---------------



Door F L, Scratch(es), Acceptable	0,00
-----------------------------------	------

*No pictures to display*

Bumper R, Scratch(es), Acceptable	0,00
-----------------------------------	------

*No pictures to display*

Bonnet, Chemical polution, LI - Repair and paint (complete)	44,60
---	-------



Bonnet, Chemical polution, LI - Repair and paint (complete)	290,08
---	--------



Bumper F, Scratch(es), LI - Repair and paint (complete)	211,80
---	--------

