


RENAULT Grand Scenic: 1HCL926

| | | | |
|------------------------------------|--------------------------|--------------|---------------------------------------|
| Vinnumber: | VF1JZ14M651176703 | Versionname: | GRAND SCENIC Bose Ed.5pl.110PK |
| First Registrationdate: | 18/06/2014 | Fiscalpower: | |
| Expertise Mileage: | 129809 | Power Kw: | 81 |
| Bodytype: | | Body color: | Grey |
| Gearbox: | MAN 6 VIT | Paint type: | Metalic |
| Transmission: | Front | Rims summer: | Aluminium |
| Fueltype: | Diesel | Oil level: | OK |
| Battery functioning: | Yes | Parking lot: | 3210 |
| Number of doors: | 5 | | |
| Number of seats: | 5 | | |
| Number head rests: | 5 | | |
| Rims summer: | Aluminium | | |
| Category: | Passenger Car | | |
| Oil level: | OK | | |
| Registration Certificate Car (BE): | Yes | | |

Options

| | |
|--------------------------------|---------------------------------------|
| Radio CD | Central consol F |
| Windows electric F | Luggage cover |
| Windows electric R | Front parking sensors |
| Cruise Control | Rear parking sensors |
| Steering wheel multifunctional | Type of Tow bar |
| Radio multimedia | No Tow bar |
| Type of headlighting | Headlighting Halogen |
| Type of GPS | GPS big screen color |
| Type of Lining | Lining semi-artificial leather |
| Type of climate control | Autom climate control |

Limited Technical Inspection

| | | | |
|---------------------|-----------|---------------------|------------|
| Airco functioning | OK | Battery functioning | Yes |
| Tires wear profile | OK | Power steering | Yes |
| Idle position | OK | Sound engine | OK |
| Engine startingtime | OK | Clutch test | OK |
| Exhaust gass | OK | Wiper fluid level | OK |
| Handbrake | OK | Transmission | OK |
| | | Lighting | OK |
| | | Wiperblades | OK |

Degree of wear

| | | | | |
|---------------|----------------------------------|--------------------------|-------|--------------------------|
| | 205/55/17/95 V LightMetal | | | |
| Summer tyres: | Fr.L. | Continental: 5 mm | Fr.R. | Continental: 5 mm |
| | Re.L. | Continental: 5 mm | Re.R. | Continental: 5 mm |

Assistance equipment

| | | | |
|--|------------|------|------------|
| Spare wheel | Yes | Jack | Yes |
| Number of charging cables (normal) | 0 | | |
| Number of charging cables (rapid charge) | 0 | | |

| | |
|---|----------------|
| Total cost ex VAT | 1018,20 |
| Alloy rim F R polished, Scratch(es), LI - Repair and paint (complete) | 95,00 |



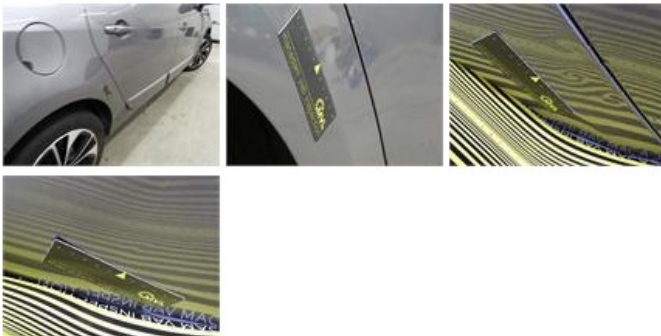
Wing R L, Scratch(es), LI - Repair and paint (complete) 308,20



Alloy rim F L polished, Scratch(es), LI - Repair and paint (complete) 95,00



Wing R R, Dent(s), LI - Repair and paint (complete) 308,20



Bumper R, Dent(s) and scratch(es), LI - Repair and paint (complete) 211,80



Alloy rim R L polished, Rust, Acceptable 0,00

No pictures to display

Bumper F, Bad repair, Acceptable 0,00

