



BMW 1 SPORTSHATCH: 1LCD882

Vinnumber:	WBA2P51090P814247	Versionname:	1.5 116D EFFICIENTDYNAMICS EDIT. (85KW)
First Registrationdate:	18/08/2015	Fiscalpower:	
Expertise Mileage:	77543	Power Kw:	85
Bodytype:		Body color:	White
Gearbox:	MAN 6 VIT	Paint type:	Opaque
Transmission:	Back	Rims summer:	Aluminium
Fueltype:	Diesel	Oil level:	OK
Battery functioning:	Yes	Parking lot:	4123
Number of doors:	3		
Number of seats:	5		
Number head rests:	5		
Rims summer:	Aluminium		
Category:	Passenger Car		
Oil level:	OK		
Registration Certificate Car (BE):	Yes		

Options

Radio CD		Central consol F	
GPS storage		Luggage cover	
GPS storage	HD	Type of Tow bar	No Tow bar
Windows electric F			
Cruise Control			
Steering wheel multifunctional			
Radio multimedia			
Type of headlighting	Headlighting Halogen		
Type of GPS	GPS big screen color		
Type of Lining	Lining fabrics		
Type of climate control	Autom climate control		

Limited Technical Inspection

Airco functioning	OK	Battery functioning	Yes
Tires wear profile	OK	Power steering	Yes
Idle position	OK	Sound engine	OK
Engine startingtime	OK	Clutch test	OK
Exhaust gass	OK	Wiper fluid level	OK
Handbrake	OK	Transmission	OK
		Lighting	OK
		Wiperblades	OK

Degree of wear

205/55/16/91 V LightMetal				
Summer tyres:	Fr.L.	Pirelli: 4 mm	Fr.R.	Pirelli: 3 mm
	Re.L.	Pirelli: 4 mm	Re.R.	Pirelli: 3 mm

Assistance equipment

Repair kit	Yes	Compressor	Yes
Number of charging cables (normal)	0		
Number of charging cables (rapid charge)	0		

Total cost ex VAT 1041,50

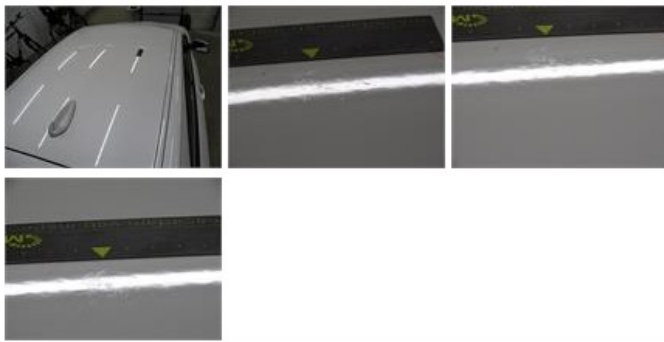
Door F R, Scratch(es), Acceptable 0,00

No pictures to display

Bumper R, Scratch(es), Acceptable 0,00

No pictures to display

Roof, Chemical polution, LI - Repair and paint (complete) 481,50



Alloy rim R R, Scratch(es), LI - Repair and paint (complete) 95,00



Alloy rim R L, Scratch(es), Acceptable 0,00

No pictures to display

Bumper F, Scratch(es), Acceptable 0,00

No pictures to display

Wing R L, Scratch(es), Acceptable 0,00

No pictures to display

Alloy rim F R, Scratch(es), LI - Repair and paint (complete) 95,00



Door F L, Scratch(es), Acceptable 0,00

No pictures to display

Windscreen, Scratch(es), Acceptable 0,00



Wing F R, Scratch(es), 67 - Polish 0,00

No pictures to display

Rear window, Scratch(es), E - Replace 370,00



Bonnet, Scratch(es), 67 - Polish 0,00

No pictures to display