



**VOLVO V40: 1JFH505**

Vinnumber:	<b>YV1MV8481F2215532</b>	Versionname:	<b>V40 D2 Base 115PK</b>
First Registrationdate:	<b>2/12/2014</b>	Fiscalpower:	
Expertise Mileage:	<b>108710</b>	Power Kw:	<b>84</b>
Bodytype:		Body color:	<b>Dark Blue</b>
Gearbox:	<b>MAN 6 VIT</b>	Paint type:	<b>Metalic</b>
Transmission:	<b>Front</b>	Rims summer:	<b>Aluminium</b>
Fueltype:	<b>Diesel</b>	Oil level:	<b>OK</b>
Battery functioning:	<b>Yes</b>	Parking lot:	<b>4310</b>
Number of doors:	<b>5</b>		
Number of seats:	<b>5</b>		
Number head rests:	<b>5</b>		
Rims summer:	<b>Aluminium</b>		
Category:	<b>Passenger Car</b>		
Oil level:	<b>OK</b>		
Registration Certificate Car (BE):	<b>Yes</b>		

**Options**

Radio CD		Central consol F	
GPS storage		Luggage cover	
GPS storage	<b>HD</b>	Rear parking sensors	
Windows electric F		Type of Tow bar	<b>Tow bar fixed</b>
Windows electric R			
Cruise Control			
Steering wheel multifunctional			
Radio multimedia			
Type of headlighting	<b>Headlighting Halogen</b>		
Type of GPS	<b>GPS big screen color</b>		
Type of Lining	<b>Lining fabrics</b>		
Type of climate control	<b>Manual climate control</b>		

**Limited Technical Inspection**

Airco functioning	<b>OK</b>	Battery functioning	<b>Yes</b>
Tires wear profile	<b>OK</b>	Power steering	<b>Yes</b>
Idle position	<b>OK</b>	Sound engine	<b>OK</b>
Engine startingtime	<b>OK</b>	Clutch test	<b>OK</b>
Exhaust gass	<b>OK</b>	Wiper fluid level	<b>OK</b>
Handbrake	<b>OK</b>	Transmission	<b>OK</b>
		Lighting	<b>OK</b>
		Wiperblades	<b>OK</b>

**Degree of wear**

<b>205/55/16/91 H LightMetal</b>				
Summer tyres:	Fr.L.	<b>Michelin: 3 mm</b>	Fr.R.	<b>Michelin: 3 mm</b>
	Re.L.	<b>Michelin: 4 mm</b>	Re.R.	<b>Michelin: 4 mm</b>

**Assistance equipment**

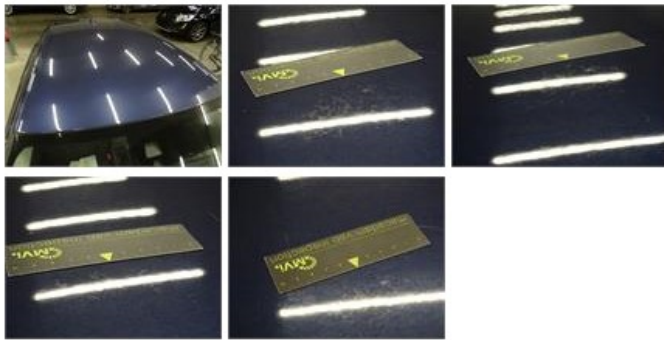
Repair kit	<b>Yes</b>	Compressor	<b>Yes</b>
Number of charging cables (normal)	<b>0</b>		
Number of charging cables (rapid charge)	<b>0</b>		

<b>Total cost ex VAT</b>	<b>2623,82</b>
<b>Door F L, Scratch(es), Acceptable</b>	<b>0,00</b>
<i>No pictures to display</i>	
<b>Alloy rim R R, Scratch(es), LI - Repair and paint (complete)</b>	<b>95,00</b>



Roof, Chemical pollution, LI - Repair and paint (complete)

481,50



Door R R, Scratch(es), LI - Repair and paint (complete)

318,35



Alloy rim R L, Scratch(es), LI - Repair and paint (complete)

95,00



Wing R R, Dent(s) and scratch(es), LI - Repair and paint (complete)

308,20



Door F R, Scratch(es), LI - Repair and paint (complete)

318,35



Wing F L, Dent(s), PDR - Paintless dent repair

63,00



Bumper F, Scratch(es), LI - Repair and paint (complete)

211,80



Alloy rim F L, Scratch(es), LI - Repair and paint (complete)

95,00



Bumper R, Scratch(es), LI - Repair and paint (complete)

211,80



Door R L, Scratch(es), Acceptable

0,00

No pictures to display

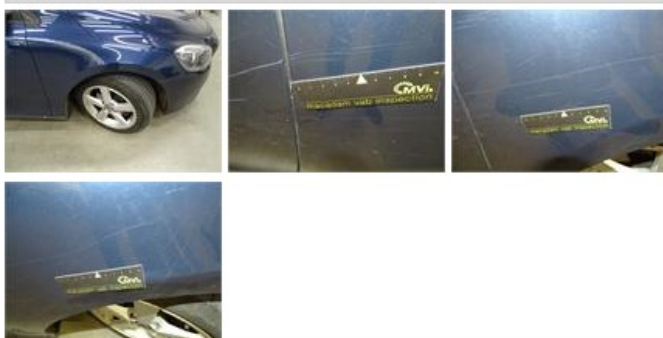
Alloy rim F R, Scratch(es), LI - Repair and paint (complete)

95,00



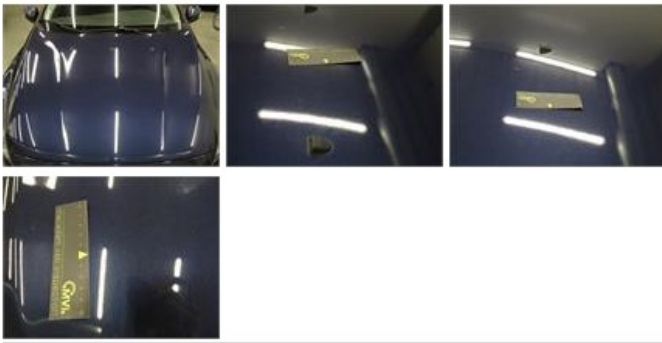
Wing F R, Scratch(es), LI - Repair and paint (complete)

220,18



Bonnet, Bad repair, Acceptable

0,00



Tailgate, Scratch(es), Acceptable	0,00
<i>No pictures to display</i>	
Bumper cover R M, Scratch(es), Smart repair	110,64

