



**MAZDA 3 SEDAN: 1LRA133**

Vinnumber:	<b>JMZBM622611314335</b>	Versionname:	<b>2.2 SKYACTIV-D 150HP SKYDRIVE</b>
First Registrationdate:	<b>10/11/2015</b>	Fiscalpower:	
Expertise Mileage:	<b>151533</b>	Power Kw:	<b>110</b>
Bodytype:		Body color:	<b>Grey</b>
Gearbox:	<b>MAN 6 VIT</b>	Paint type:	<b>Metalic</b>
Transmission:	<b>Front</b>	Rims summer:	<b>Aluminium</b>
Fueltype:	<b>Diesel</b>	Oil level:	<b>OK</b>
Battery functioning:	<b>Yes</b>	Parking lot:	<b>4209</b>
Number of doors:	<b>4</b>		
Number of seats:	<b>5</b>		
Number head rests:	<b>5</b>		
Rims summer:	<b>Aluminium</b>		
Category:	<b>Passenger Car</b>		
Oil level:	<b>OK</b>		
Registration Certificate Car (BE):	<b>Yes</b>		

**Options**

Radio CD	Central consol F
GPS storage	Type of Tow bar
GPS storage	<b>HD</b>
Windows electric F	<b>No Tow bar</b>
Windows electric R	
Cruise Control	
Steering wheel multifunctional	
Radio multimedia	
Type of headlighting	<b>Headlighting Halogen</b>
Type of GPS	<b>GPS big screen color</b>
Type of Lining	<b>Lining fabrics</b>
Type of climate control	<b>Autom climate control</b>

**Limited Technical Inspection**

Airco functioning	<b>OK</b>	Battery functioning	<b>Yes</b>
Tires wear profile	<b>OK</b>	Power steering	<b>Yes</b>
Idle position	<b>OK</b>	Sound engine	<b>OK</b>
Engine startingtime	<b>OK</b>	Clutch test	<b>OK</b>
Exhaust gass	<b>OK</b>	Wiper fluid level	<b>OK</b>
Handbrake	<b>OK</b>	Transmission	<b>OK</b>
		Lighting	<b>OK</b>
		Wiperblades	<b>OK</b>

**Degree of wear**

<b>205/60/16/92 V LightMetal</b>				
Summer tyres:	Fr.L.	<b>Bridgestone: 5 mm</b>	Fr.R.	<b>Bridgestone: 5 mm</b>
	Re.L.	<b>Michelin: 5 mm</b>	Re.R.	<b>Michelin: 5 mm</b>

**Assistance equipment**

Repair kit	<b>Yes</b>	Compressor	<b>Yes</b>
Number of charging cables (normal)	<b>0</b>		
Number of charging cables (rapid charge)	<b>0</b>		

<b>Total cost ex VAT</b>	<b>2059,00</b>
--------------------------	----------------

<b>Door R R, Scratch(es), Acceptable</b>	<b>0,00</b>
--	-------------

*No pictures to display*

<b>Windscreen, Scratch(es), E - Replace</b>	<b>0,00</b>
---	-------------



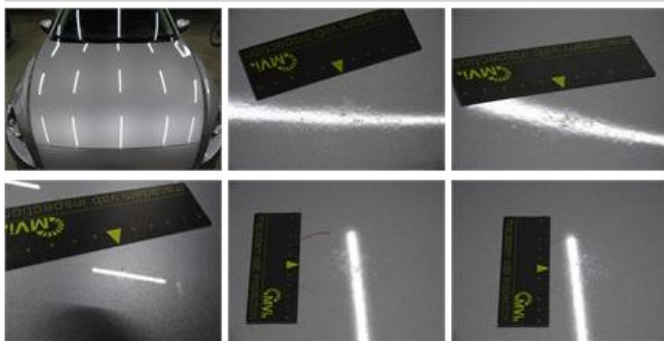
Door F L, Scratch(es), LI - Repair and paint (complete)

318,35



Bonnet, Chemical pollution, LI - Repair and paint (complete)

290,08



Wing R R, Dent(s), Acceptable

0,00

*No pictures to display*

Roof, Dent(s) and scratch(es), LI - Repair and paint (complete)

481,50



Steering wheel, Worn, Acceptable

0,00



Wing R L, Scratch(es), Acceptable

0,00

*No pictures to display*

Tailgate, Dent(s), LI - Repair and paint (complete)

301,68



Alloy rim F R, Scratch(es), Acceptable 0,00

No pictures to display

Rearview mirror housing R, Scratch(es), LI - Repair and paint (complete) 115,56



Wing F R, Scratch(es), LI - Repair and paint (complete) 220,18



Door R L, Scratch(es), Acceptable 0,00

No pictures to display

Rearview mirror housing L, Scratch(es), Acceptable 0,00

No pictures to display

Bumper F, Scratch(es), LI - Repair and paint (complete) 0,00



Sill outer L, Not original part, E - Replace 119,85



Bumper R, Dent(s) and scratch(es), LI - Repair and paint (complete) 211,80

