



LAND ROVER DISCOVERY SPORT: 1LLT475

Vinnumber:	SALCA2BN2GH561383	Versionname:	2.0 TD4 110KW HSE 4WD AUTO
First Registrationdate:	22/10/2015	Fiscalpower:	
Expertise Mileage:	113793	Power Kw:	110
Bodytype:		Body color:	Dark Green
Gearbox:	Automatic	Paint type:	Metalic
Transmission:	4 Weel	Rims summer:	Aluminium
Fueltype:	Diesel	Oil level:	OK
Battery functioning:	Yes	Parking lot:	3725
Number of doors:	5		
Number of seats:	7		
Number head rests:	7		
Rims summer:	Aluminium		
Category:	Passenger Car		
Oil level:	OK		
Registration Certificate Car (BE):	Yes		

Options

GPS storage	HD	Seats electric F L	
GPS storage		Seats electric F R	
Windows electric F		Central consol F	
Windows electric R		Luggage cover	
Cruise Control		Front parking sensors	
Steering wheel multifunctional		Rear parking sensors	
Radio multimedia		Type of Tow bar	Tow bar fixed
Type of headlighting	Headlighting Xenon		
Type of GPS	GPS big screen color		
Type of Lining	Lining leather		
Type of climate control	Autom climate control		

Limited Technical Inspection

Airco functioning	OK	Battery functioning	Yes
Tires wear profile	OK	Power steering	Yes
Idle position	OK	Sound engine	OK
Engine startingtime	OK	Clutch test	OK
Exhaust gass	OK	Wiper fluid level	OK
Handbrake	OK	Transmission	OK
		Lighting	OK
		Wiperblades	OK

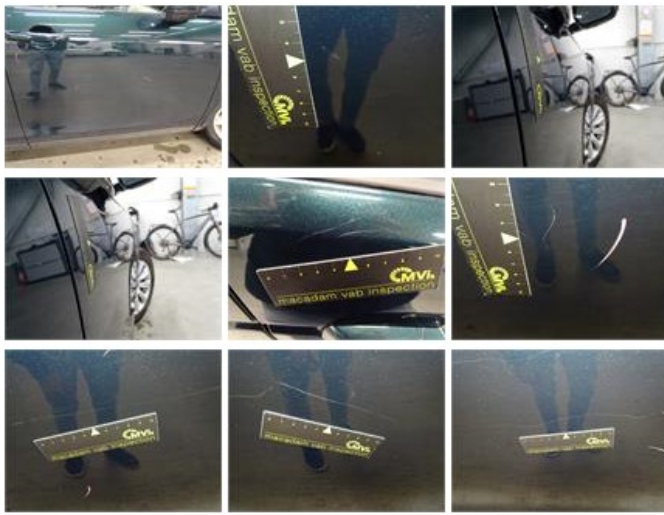
Degree of wear

	235/60/18/107 W LightMetal			
Summer tyres:	Fr.L.	Michelin: 4 mm	Fr.R.	Michelin: 4 mm
	Re.L.	Pirelli: 5 mm	Re.R.	Pirelli: 5 mm

Assistance equipment

Repair kit	Yes	Compressor	Yes
Number of charging cables (normal)	0		
Number of charging cables (rapid charge)	0		

Total cost ex VAT	2330,88
Bumper F, Scratch(es), 67 - Polish	0,00
<i>No pictures to display</i>	
Door F R, Dent(s) and scratch(es), LI - Repair and paint (complete)	382,02



Tailgate, Dent(s) and scratch(es), LI - Repair and paint (complete)

362,02



Wing R L, Scratch(es), Acceptable

0,00

No pictures to display

Ignition key, Broken, E - Replace

150,00



Rear spoiler, Scratch(es), 67 - Polish

0,00

No pictures to display

Door F L, Dent(s) and scratch(es), LI - Repair and paint (complete)

382,02



Alloy rim F R, Scratch(es), LI - Repair and paint (complete)

95,00



Roof pillar R, Scratch(es), 67 - Polish

0,00

No pictures to display

Roof pillar L, Scratch(es), 67 - Polish

0,00

No pictures to display

Bonnet, Scratch(es), 67 - Polish

0,00

No pictures to display

Bumper F M, Dent(s) and scratch(es), Acceptable

0,00

Bumper R M, Dent(s) and scratch(es), Acceptable	0,00
<i>No pictures to display</i>	
Bumper R, Scratch(es), Acceptable	0,00
<i>No pictures to display</i>	
Wing R R, Scratch(es), Acceptable	0,00
<i>No pictures to display</i>	
Door R L, Scratch(es), Acceptable	0,00
<i>No pictures to display</i>	
Roof, Scratch(es), LI - Repair and paint (complete)	577,80



Door R R, Dent(s) and scratch(es), LI - Repair and paint (complete)	382,02
---	--------

