



| | | | |
|------------------------------------|--------------------------|--------------|-----------------------------|
| BMW 5: 1HXJ245 | | | |
| Vinnumber: | WBA5L11090D785786 | Versionname: | 5 TOURING 518d 136PK |
| First Registrationdate: | 21/10/2014 | Fiscalpower: | |
| Expertise Mileage: | 177782 | Power Kw: | 100 |
| Bodytype: | | Body color: | Blue |
| Gearbox: | MAN 6 VIT | Paint type: | Metalic |
| Transmission: | Back | Rims summer: | Aluminium |
| Fueltype: | Diesel | Oil level: | OK |
| Battery functioning: | Yes | Parking lot: | 1514 |
| Number of doors: | 5 | | |
| Number of seats: | 5 | | |
| Number head rests: | 5 | | |
| Rims summer: | Aluminium | | |
| Category: | Passenger Car | | |
| Oil level: | OK | | |
| Registration Certificate Car (BE): | Yes | | |

| | | | |
|--------------------------------|------------------------------|-----------------------|----------------------|
| Options | | | |
| Radio CD | | Central consol F | |
| GPS storage | HD | Luggage cover | |
| GPS storage | | Front parking sensors | |
| Windows electric F | | Rear parking sensors | |
| Windows electric R | | Type of Tow bar | Tow bar fixed |
| Cruise Control | | | |
| Steering wheel multifunctional | | | |
| Radio multimedia | | | |
| Type of headlighting | Headlighting Xenon | | |
| Type of GPS | GPS big screen color | | |
| Type of Lining | Lining leather | | |
| Type of climate control | Autom climate control | | |

| | | | |
|-------------------------------------|-----------|---------------------|------------|
| Limited Technical Inspection | | | |
| Airco functioning | OK | Battery functioning | Yes |
| Tires wear profile | OK | Power steering | Yes |
| Idle position | OK | Sound engine | OK |
| Engine startingtime | OK | Clutch test | OK |
| Exhaust gass | OK | Wiper fluid level | OK |
| Handbrake | OK | Transmission | OK |
| | | Lighting | OK |
| | | Wiperblades | OK |

| | | | | |
|-----------------------|----------------------------------|--------------------------|-------|--------------------------|
| Degree of wear | | | | |
| | 225/55/17/97 H LightMetal | | | |
| Winter tyres: | Fr.L. | Continental: 5 mm | Fr.R. | Continental: 5 mm |
| | Re.L. | Dunlop: 5 mm | Re.R. | Dunlop: 5 mm |

| | | | |
|--|------------|------------|------------|
| Assistance equipment | | | |
| Repair kit | Yes | Compressor | Yes |
| Number of charging cables (normal) | 0 | | |
| Number of charging cables (rapid charge) | 0 | | |

Total cost ex VAT 3167,04

Door F L, Scratch(es), Acceptable 0,00

No pictures to display

Wing F L, Scratch(es), 67 - Polish 0,00

No pictures to display

Alloy rim F R, Scratch(es), LI - Repair and paint (complete)

95,00



Door F R, Dent(s) and scratch(es), LI - Repair and paint (complete)

382,02



Alloy rim F L, Scratch(es), LI - Repair and paint (complete)

95,00



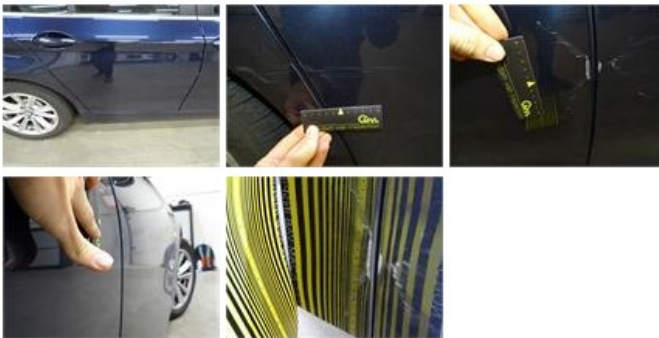
Rearlight R, Scratch(es), 67 - Polish

0,00

No pictures to display

Door R R, Dent(s) and scratch(es), LI - Repair and paint (complete)

382,02



Roof pillar L, Dent(s), Acceptable

0,00

No pictures to display

Bumper R, Dent(s) and scratch(es), LI - Repair and paint (complete)

254,16



Alloy rim R R, Scratch(es), LI - Repair and paint (complete)

95,00



Wing R L, Scratch(es), LI - Repair and paint (complete)

369,84





Rearview mirror basis R, Scratch(es), Acceptable 0,00

No pictures to display

Bonnet, Hail damage, PDR - Hail 200,00



Wing R R, Dent(s) and scratch(es), LI - Repair and paint (complete) 369,84



Alloy rim R L, Scratch(es), LI - Repair and paint (complete) 95,00



Wing F R, Scratch(es), 67 - Polish 0,00

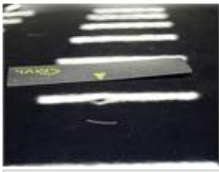
No pictures to display

Bumper F, Dent(s) and scratch(es), LI - Repair and paint (complete) 254,16



Roof, Hail damage, PDR - Hail 575,00





Door R L, Dent(s) and scratch(es), Acceptable

0,00

No pictures to display