



**BMW 5 TOURING: BG1509**

Vinnumber:	<b>WBA5J91000GV36389</b>	Versionname:	<b>2.0 525D (160KW) XDRIVE AUTO TOURING</b>
First Registrationdate:	<b>11/08/2015</b>	Fiscalpower:	
Expertise Mileage:	<b>73832</b>	Power Kw:	<b>160</b>
Bodytype:		Body color:	<b>Blue</b>
Gearbox:	<b>Automatic</b>	Paint type:	<b>Metalic</b>
Transmission:	<b>Back</b>	Rims summer:	<b>Aluminium</b>
Fueltype:	<b>Diesel</b>	Oil level:	<b>OK</b>
Battery functioning:	<b>Yes</b>	Parking lot:	<b>3515</b>
Number of doors:	<b>5</b>		
Number of seats:	<b>5</b>		
Number head rests:	<b>5</b>		
Rims summer:	<b>Aluminium</b>		
Category:	<b>Passenger Car</b>		
Oil level:	<b>OK</b>		
Registration Certificate Car (BE):	<b>Yes</b>		

**Options**

Radio CD		Central consol F	
GPS storage		Luggage cover	
GPS storage	<b>HD</b>	Front parking sensors	
Windows electric F		Rear parking sensors	
Windows electric R		Type of Tow bar	<b>No Tow bar</b>
Cruise Control			
Steering wheel multifunctional			
Radio multimedia			
Type of headlighting	<b>Headlighting Xenon</b>		
Type of GPS	<b>GPS big screen color</b>		
Type of Lining	<b>Lining leather</b>		
Type of climate control	<b>Autom climate control</b>		

**Limited Technical Inspection**

Airco functioning	<b>OK</b>	Battery functioning	<b>Yes</b>
Tires wear profile	<b>OK</b>	Power steering	<b>Yes</b>
Idle position	<b>OK</b>	Sound engine	<b>OK</b>
Engine startingtime	<b>OK</b>	Clutch test	<b>NOT OK</b>
Exhaust gass	<b>OK</b>	Wiper fluid level	<b>OK</b>
Handbrake	<b>OK</b>	Transmission	<b>OK</b>
		Lighting	<b>OK</b>
		Wiperblades	<b>OK</b>

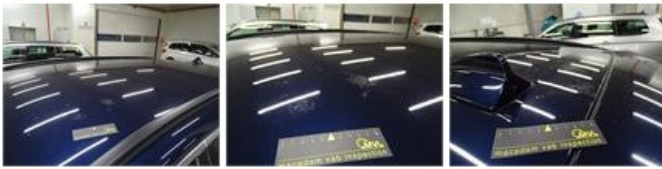
**Degree of wear**

<b>245/45/18/100 V LightMetal</b>				
Winter tyres:	Fr.L.	<b>Continental: 3 mm</b>	Fr.R.	<b>Continental: 3 mm</b>
	Re.L.	<b>Continental: 3 mm</b>	Re.R.	<b>Continental: 3 mm</b>

**Assistance equipment**

Number of charging cables (normal)	<b>0</b>	Runflat	<b>Yes</b>
Number of charging cables (rapid charge)	<b>0</b>		

<b>Total cost ex VAT</b>	<b>1943,03</b>
<b>Roof, Chemical polution, LI - Repair and paint (complete)</b>	<b>577,80</b>



Wing R R, Dent(s), Acceptable 0,00

No pictures to display

Wing R L, Scratch(es), LI - Repair and paint (complete) 369,84



Bumper R, Scratch(es), Acceptable 0,00

No pictures to display

Door R L, Scratch(es), LI - Repair and paint (complete) 382,02



Alloy rim F R, Scratch(es), LI - Repair and paint (complete) 95,00



Wing F L, Scratch(es), LI - Repair and paint (complete) 264,21



Door F R, Dent(s), Acceptable 0,00

No pictures to display

Door F L, Scratch(es), Acceptable 0,00

No pictures to display

Bumper F, Scratch(es), LI - Repair and paint (complete) 254,16

