



**MERCEDES CLA: 1FH0707**

Vinnumber:	<b>WDD1173031N002899</b>	Versionname:	<b>CLA BER 220 CDI 163PK Aut.</b>
First Registrationdate:	<b>1/07/2013</b>	Fiscalpower:	
Expertise Mileage:	<b>149740</b>	Power Kw:	<b>120</b>
Bodytype:		Body color:	<b>White</b>
Gearbox:	<b>Automatic</b>	Paint type:	<b>Opaque</b>
Transmission:	<b>Front</b>	Rims summer:	<b>Aluminium</b>
Fueltype:	<b>Diesel</b>	Oil level:	<b>OK</b>
Maintenance:	<b>REMSCHIJVEN</b>	Parking lot:	<b>3226</b>
Maintenance:	<b>NOT OK</b>		
Battery functioning:	<b>Yes</b>		
Number of doors:	<b>4</b>		
Number of seats:	<b>5</b>		
Number head rests:	<b>5</b>		
Rims summer:	<b>Aluminium</b>		
Category:	<b>Passenger Car</b>		
Oil level:	<b>OK</b>		

**Options**

Radio CD	Central consol F
Windows electric F	Front parking sensors
Windows electric R	Rear parking sensors
Cruise Control	
Steering wheel multifunctional	
Type of headlighting	<b>Headlighting Xenon</b>
Type of GPS	<b>GPS big screen color</b>
Type of Lining	<b>Lining artificial leather</b>
Type of climate control	<b>Manual climate control</b>

**Limited Technical Inspection**

Airco functioning	<b>OK</b>	Battery functioning	<b>Yes</b>
Tires wear profile	<b>OK</b>	Power steering	<b>Yes</b>
Idle position	<b>OK</b>	Sound engine	<b>OK</b>
Engine startingtime	<b>OK</b>	Clutch test	<b>OK</b>
Exhaust gass	<b>OK</b>	Wiper fluid level	<b>OK</b>
Handbrake	<b>OK</b>	Transmission	<b>OK</b>
		Lighting	<b>OK</b>
		Wiperblades	<b>OK</b>

**Degree of wear**

	<b>225/40/18/92 MS LightMetal</b>			
Winter tyres:	Fr.L.	<b>Michelin: 4 mm</b>	Fr.R.	<b>Michelin: 4 mm</b>
	Re.L.	<b>Michelin: 5 mm</b>	Re.R.	<b>Michelin: 5 mm</b>

**Assistance equipment**

Total cost ex VAT	760,80
Bumper F, Scratch(es), LI - Repair and paint (complete)	211,80





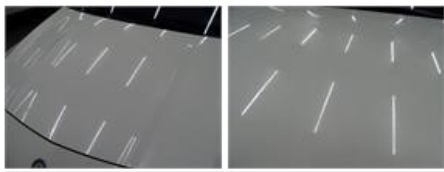
Alloy rim R R polished, Scratch(es), LI - Repair and paint (complete) 95,00



Backrest cover F L, Worn, Acceptable 0,00



Bonnet, Scratch(es), Acceptable 0,00



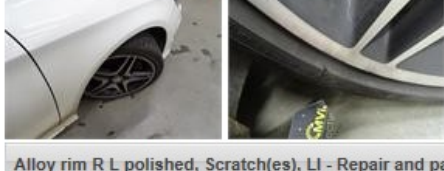
Bumper R, Scratch(es), Acceptable 0,00

No pictures to display

Backrest cover F R, Worn, Acceptable 0,00



Tyre F R, Tear, E - Replace 132,00



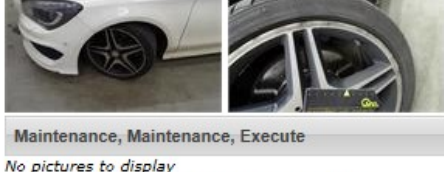
Alloy rim R L polished, Scratch(es), LI - Repair and paint (complete) 95,00



Bodywork, Scratch(es), 67 - Polish 0,00

No pictures to display

Alloy rim F L polished, Scratch(es), LI - Repair and paint (complete) 95,00



Maintenance, Maintenance, Execute 0,00

No pictures to display

Tyre R L, Deformed / Strained, E - Replace 132,00

