



**MINI CLUBMAN: 1NTX791**

Vinnumber:	<b>WMWLR710302E13643</b>	Versionname:	<b>1.5 ONE D CLUBMAN</b>
First Registrationdate:	<b>26/04/2016</b>	Fiscalpower:	
Expertise Mileage:	<b>112791</b>	Power Kw:	<b>85</b>
Bodytype:		Body color:	<b>Grey</b>
Gearbox:	<b>MAN 6 VIT</b>	Paint type:	<b>Metalic</b>
Transmission:	<b>Front</b>	Rims summer:	<b>Aluminium</b>
Fueltype:	<b>Diesel</b>	Oil level:	<b>OK</b>
Battery functioning:	<b>Yes</b>	Parking lot:	<b>1721</b>
Number of doors:	<b>6</b>		
Number of seats:	<b>5</b>		
Number head rests:	<b>5</b>		
Rims summer:	<b>Aluminium</b>		
Category:	<b>Passenger Car</b>		
Oil level:	<b>OK</b>		

**Options**

GPS storage		Central consol F	
GPS storage	<b>HD</b>	Luggage cover	
Windows electric F		Type of Tow bar	<b>No Tow bar</b>
Windows electric R			
Radio multimedia			
Type of headlighting	<b>Headlighting Halogen</b>		
Type of GPS	<b>GPS big screen color</b>		
Type of Lining	<b>Lining fabrics</b>		
Type of climate control	<b>Manual climate control</b>		

**Limited Technical Inspection**

Airco functioning	<b>OK</b>	Battery functioning	<b>Yes</b>
Tires wear profile	<b>OK</b>	Power steering	<b>Yes</b>
Idle position	<b>OK</b>	Sound engine	<b>OK</b>
Engine startingtime	<b>OK</b>	Clutch test	<b>OK</b>
Exhaust gass	<b>OK</b>	Wiper fluid level	<b>OK</b>
Handbrake	<b>OK</b>	Transmission	<b>OK</b>
		Lighting	<b>OK</b>
		Wiperblades	<b>OK</b>

**Degree of wear**

	<b>205/55/16/91 V LightMetal</b>			
Summer tyres:	Fr.L.	<b>Uniroyal: 6 mm</b>	Fr.R.	<b>Uniroyal: 6 mm</b>
	Re.L.	<b>Bridgestone: 4 mm</b>	Re.R.	<b>Bridgestone: 4 mm</b>

**Assistance equipment**

Repair kit	<b>Yes</b>	Compressor	<b>Yes</b>
Number of charging cables (normal)	<b>0</b>		
Number of charging cables (rapid charge)	<b>0</b>		

<b>Total cost ex VAT</b>	<b>2357,64</b>
<b>Door R R, Scratch(es), LI - Repair and paint (complete)</b>	<b>318,35</b>



Door F L, Dent(s) and scratch(es), Acceptable	0,00
<i>No pictures to display</i>	
Wing R R, Scratch(es), 67 - Polish	0,00
<i>No pictures to display</i>	
Door trim R L, Scratch(es), Acceptable	0,00
<i>No pictures to display</i>	
Seat cover R, Stain, Cleaning	25,00



Door F R, Dent(s) and scratch(es), LI - Repair and paint (complete)	318,35
---	--------



Wing trim R R, Scratch(es), E - Replace	84,00
---	-------

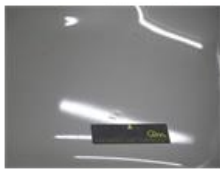


Bumper F M, Scratch(es), Smart repair	110,64
---------------------------------------	--------



Bonnet, Hail damage, PDR - Hail	525,00
---------------------------------	--------





Bumper R, Scratch(es), LI - Repair and paint (complete)

211,80



Boot cover, Missing, E - Replace

50,00



Door trim R R, Scratch(es), E - Replace

114,00



Wing F L, Scratch(es), Acceptable

0,00

No pictures to display

Bumper F, Scratch(es), 67 - Polish

0,00

No pictures to display

Alloy rim F R, Scratch(es), LI - Repair and paint (complete)

95,00



Roof, Chemical polution, LI - Repair and paint (complete)

505,50

