



**VOLVO V60: 1LSF107**

Vinnumber:	<b>YV1FW74C1G1307642</b>	Versionname:	<b>2.0 D2 KINETIC</b>
First Registrationdate:	<b>20/11/2015</b>	Fiscalpower:	
Expertise Mileage:	<b>79953</b>	Power Kw:	<b>88</b>
Bodytype:		Body color:	<b>Silver</b>
Gearbox:	<b>MAN 6 VIT</b>	Paint type:	<b>Metalic</b>
Transmission:	<b>Front</b>	Rims summer:	<b>Aluminium</b>
Fueltype:	<b>Diesel</b>	Oil level:	<b>OK</b>
Battery functioning:	<b>Yes</b>	Parking lot:	<b>2505</b>
Number of doors:	<b>5</b>		
Number of seats:	<b>5</b>		
Number head rests:	<b>5</b>		
Rims summer:	<b>Aluminium</b>		
Category:	<b>Passenger Car</b>		
Oil level:	<b>OK</b>		
Registration Certificate Car (BE):	<b>Yes</b>		

**Options**

Radio CD	Central consol F
Windows electric F	Luggage cover
Windows electric R	Rear parking sensors
Cruise Control	Type of Tow bar
Steering wheel multifunctional	<b>No Tow bar</b>
Radio multimedia	
Type of headlighting	<b>Headlighting Halogen</b>
Type of GPS	<b>GPS big screen color</b>
Type of Lining	<b>Lining fabrics</b>
Type of climate control	<b>Autom climate control</b>

**Limited Technical Inspection**

Airco functioning	<b>OK</b>	Battery functioning	<b>Yes</b>
Tires wear profile	<b>OK</b>	Power steering	<b>Yes</b>
Idle position	<b>OK</b>	Sound engine	<b>OK</b>
Engine startingtime	<b>OK</b>	Clutch test	<b>OK</b>
Exhaust gass	<b>OK</b>	Wiper fluid level	<b>OK</b>
Handbrake	<b>OK</b>	Transmission	<b>OK</b>
		Lighting	<b>OK</b>
		Wiperblades	<b>OK</b>

**Degree of wear**

<b>215/55/16/97 V LightMetal</b>			
Winter tyres:	Fr.L.	Fr.R.	Continental: 5 mm
	Re.L.	Re.R.	Continental: 5 mm

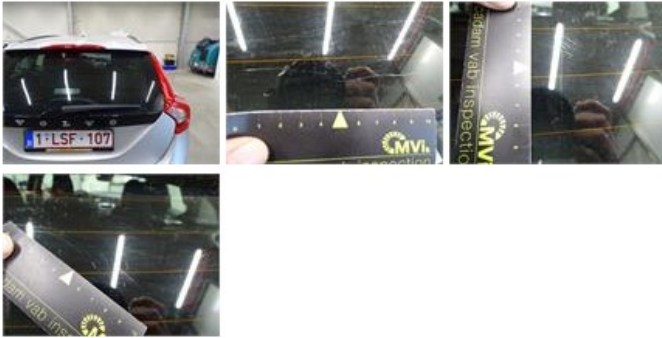
**Assistance equipment**

Repair kit	<b>Yes</b>	Compressor	<b>Yes</b>
Number of charging cables (normal)	<b>0</b>		
Number of charging cables (rapid charge)	<b>0</b>		

Total cost ex VAT	793,60
Bumper R, Scratch(es), LI - Repair and paint (complete)	211,80



Rear window, Scratch(es), E - Replace 370,00



Door R R, Scratch(es), Acceptable 0,00

No pictures to display

Bumper F, Scratch(es), LI - Repair and paint (complete) 211,80

