



**VOLVO V40: 1TBQ089**

Vinnumber:	<b>YV1MV7481J2459581</b>	Versionname:	<b>D2 Kinetic Eco</b>
First Registrationdate:	<b>15/09/2017</b>	Fiscalpower:	
Expertise Mileage:	<b>52576</b>	Power Kw:	<b>88</b>
Bodytype:		Body color:	<b>Black</b>
Gearbox:	<b>MAN 6 VIT</b>	Paint type:	<b>Metalic</b>
Transmission:	<b>Front</b>	Rims summer:	<b>Aluminium</b>
Fueltype:	<b>Diesel</b>	Oil level:	<b>OK</b>
Battery functioning:	<b>Yes</b>	Parking lot:	<b>4111</b>
Number of doors:	<b>5</b>		
Number of seats:	<b>5</b>		
Number head rests:	<b>5</b>		
Rims summer:	<b>Aluminium</b>		
Category:	<b>Passenger Car</b>		
Oil level:	<b>OK</b>		
Registration Certificate Car (BE):	<b>Yes</b>		

**Options**

Radio CD		Central consol F	
GPS storage		Luggage cover	
GPS storage	<b>HD</b>	Rear parking sensors	
Windows electric F		Type of Tow bar	<b>No Tow bar</b>
Windows electric R			
Cruise Control			
Steering wheel multifunctional			
Radio multimedia			
Type of headlighting	<b>Headlighting Halogen</b>		
Type of GPS	<b>GPS big screen color</b>		
Type of Lining	<b>Lining fabrics</b>		
Type of climate control	<b>Manual climate control</b>		

**Limited Technical Inspection**

Airco functioning	<b>OK</b>	Battery functioning	<b>Yes</b>
Tires wear profile	<b>OK</b>	Power steering	<b>Yes</b>
Idle position	<b>OK</b>	Sound engine	<b>OK</b>
Engine startingtime	<b>OK</b>	Clutch test	<b>OK</b>
Exhaust gass	<b>OK</b>	Wiper fluid level	<b>OK</b>
Handbrake	<b>OK</b>	Transmission	<b>OK</b>
		Lighting	<b>OK</b>
		Wiperblades	<b>OK</b>

**Degree of wear**

	<b>205/55/16/94 V LightMetal</b>			
Winter tyres:	Fr.L.	<b>Michelin: 3 mm</b>	Fr.R.	<b>Michelin: 3 mm</b>
	Re.L.	<b>Michelin: 5 mm</b>	Re.R.	<b>Michelin: 5 mm</b>

**Assistance equipment**

Repair kit	<b>Yes</b>	Compressor	<b>Yes</b>
Number of charging cables (normal)	<b>0</b>		
Number of charging cables (rapid charge)	<b>0</b>		

<b>Total cost ex VAT</b>	<b>966,88</b>
--------------------------	---------------

<b>Door F R, Scratch(es), Acceptable</b>	<b>0,00</b>
--	-------------

<i>No pictures to display</i>	
<b>Wing F R, Scratch(es), 67 - Polish</b>	<b>0,00</b>

<i>No pictures to display</i>	
-------------------------------	--



Wing R R, Scratch(es), 67 - Polish

0,00

*No pictures to display*

Door R R, Scratch(es), 67 - Polish

0,00

*No pictures to display*

Rear window, Scratch(es), E - Replace

370,00



Bumper F, Scratch(es), Acceptable

0,00

*No pictures to display*

Door F L, Scratch(es), Acceptable

0,00

*No pictures to display*

Sill outer L, Scratch(es), Acceptable

0,00

*No pictures to display*

Alloy rim F R, Scratch(es), LI - Repair and paint (complete)

95,00



Windscreen, Scratch(es), Acceptable

0,00



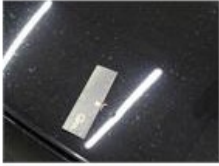
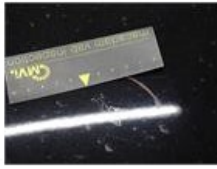
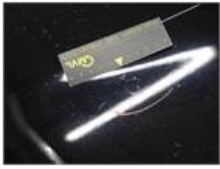
Roof, Scratch(es), 6/ - Polish

0,00

No pictures to display

Bonnet, Chemical polution, LI - Repair and paint (complete)

290,08



Door R L, Scratch(es), Acceptable

0,00

No pictures to display